



Commercial Vehicle Auctions Ltd.

HT23VND

CN: WF0AXXTTRAPL50429

Photos



General Details

FORD TRANSIT 350 LEADER ECOBLUE 2.0 TDCI 130PS

Vat Status: Commercial (plus Vat)

Mileage	15,398 miles	Miles Warranty	Yes
Colour	White	Fuel	Diesel
Transmission	Manual	Fuel Level	Quarter
Reg Date	27/07/2023	Engine Size	
Body Type			

Details

Engine No	Cab Type	Plated Weight	Doors
Body Length	Axle Combi	Steering Combi	Rear Susp
Gears	6 DFR	YOM	Runner? Yes/No
	27/07/2023	2023	Yes



Valid MOT
Expires: 26/07/2026



No V5

Extras

Stereo:	Radio	Electric	2
Interior:	Cloth	Windows:	
Sat Nav:	No	Central Locking:	Yes
Air	No	Phone Kit:	No
Conditioning:		Metallic Paint:	No
Cruise Control	No		

Tyres & Wheels

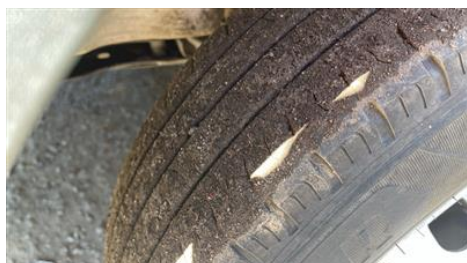
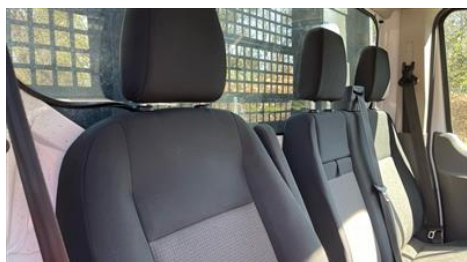
Alloy	OSF	3mm-5mm
Steel ✓	Depth	mm
	NSF	3mm-5mm
	Depth	mm
	OSR	3mm-5mm
	Depth	mm
	NSR	3mm-5mm
	Depth	mm

Interior Condition

Carpets	Good
Upholstery	Good
Seats	Good
Odour	Average
Comments	

Service History

Service History	No
Stamps	



Damage Lines			
Component	Condition	Severity	Repair
Qtr Panel osr	Scratched	UpTo 25mm Thru Paint	Smart Repair
Door Mirror Glass os	Missing	Replace	Replace
Bumper Front Moulding	Scuffed (Unpainted)	UpTo 100mm	Smart Repair
Qtr Panel nsr	Dented	With Paint Damage	Repair and Refinish
Tailgate	Dented	With Paint Damage	Repair and Refinish

Vehicle Splat






Splat Key

S3
Scratch/Paint defect 100m +

D2
Dent/damage 30-100mm

M
Missing

SC
Scuff

Damage Assessment					
	<p>Qtr Panel osr</p> <p>Scratched</p> <p>UpTo 25mm Thru Paint</p> <p>Smart Repair</p>		<p>Door Mirror Glass os</p> <p>Missing</p> <p>Needs Replaced</p> <p>Replace</p>		<p>Bumper Front Moulding</p> <p>Scuffed (Unpainted)</p> <p>UpTo 100mm</p> <p>Smart Repair</p>
	<p>Qtr Panel nsr</p> <p>Dented</p> <p>With Paint Damage</p> <p>Repair and Refinish</p>		<p>Tailgate</p> <p>Dented</p> <p>With Paint Damage</p> <p>Repair and Refinish</p>		

Comments
<p>No mechanical inspection has been undertaken on this vehicle, any mechanical items noted are for reference only and cannot be relied on.</p>

The details within this inspection report are correct at point of vehicle arrival. Updates, errors and omissions will be highlighted by the CVA Auctions via catalogues, the website, entry forms or by the auctioneer.