



Commercial Vehicle Auctions Ltd.

PJ20VBM

CN: W1V9076352P254710

Photos



General Details

MERCEDES-BENZ SPRINTER 314 CDI

Vat Status: Commercial (plus Vat)

Mileage	178,469 miles	Miles Warranty	
Colour	White	Fuel	Diesel
Transmission	Auto	Fuel Level	
Reg Date	29/07/2020	Engine Size	
Body Type			

Details

Engine No	Cab Type	Plated Weight	Doors
Body Length	Axle Combi	Steering Combi	Rear Susp
Gears	DFR	YOM	Runner? Yes/No
	29/07/2020	2020	Yes



Valid MOT
Expires: 05/06/2025



No V5

Extras

Stereo:	Radio	Electric	2
Interior:	Cloth	Windows:	
Sat Nav:	No	Central	Yes
Air	No	Locking:	
Conditioning:		Phone Kit:	BlueTooth
Cruise Control	Yes	Metallic	No
		Paint:	

Tyres & Wheels

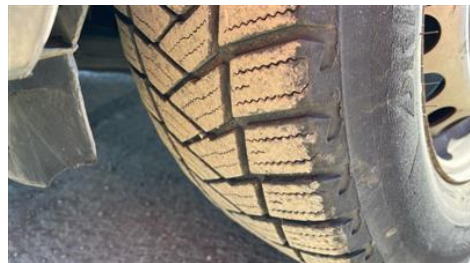
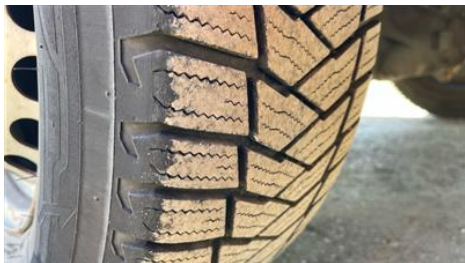
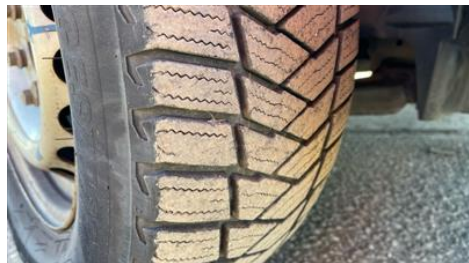
Alloy	OSF Depth	mm
Steel ✓	NSF Depth	mm
	OSR Depth	mm
	NSR Depth	mm

Interior Condition

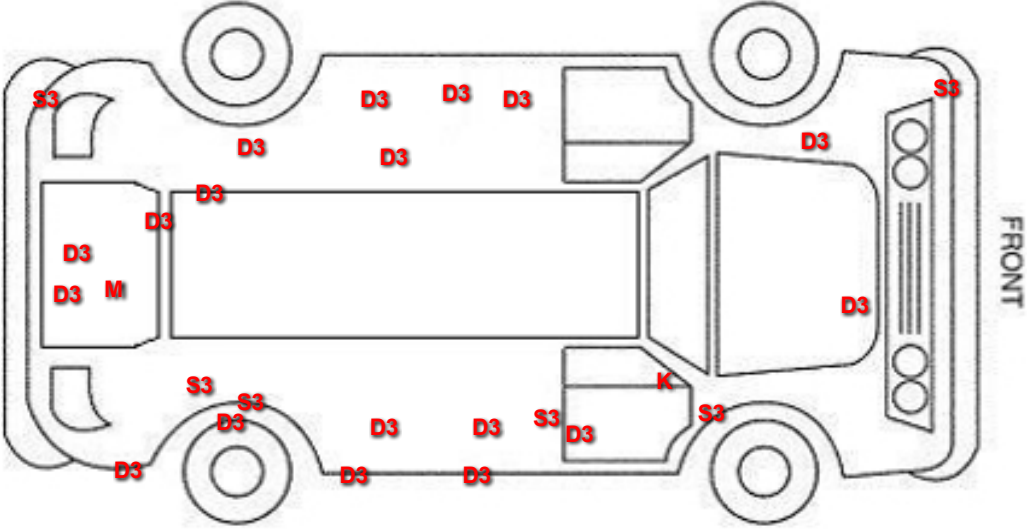
Carpets	Poor
Upholstery	Good
Seats	Poor
Odour	Good
Comments	




Service History

Service	No
History	
Stamps	



Damage Lines			
Component	Condition	Severity	Repair
Bonnet	Dented	Over 30mm	Repair and Refinish
Bumper Front	Scratched	Over 100mm Thru Paint	Refinish
Wing nsf	Dented	Over 30% Of Panel	Replace
Qtr Panel nsr	Dented	Over 30mm	Repair and Refinish
Qtr Panel nsr	Dented	Over 30mm	Repair and Refinish
Qtr Panel nsr	Dented	Over 30mm	Repair and Refinish
Qtr Panel nsr	Dented	Over 30mm	Repair and Refinish
Bumper Rear Moulding	Scuffed (Unpainted)	Over 100mm	Smart Repair
Door nsr	Dented	Over 30mm	Repair and Refinish
Door nsr	Dented	Over 30mm	Repair and Refinish
Badgedecal Rear	Missing	Replace	Replace
Door osr	Dented	Over 30mm	Repair and Refinish
Qtr Panel osr	Scratched	Over 25mm Thru Paint	Refinish
Qtr Panel osr	Dented	Over 30mm	Repair and Refinish
Qtr Panel osr	Dented	Over 30mm	Repair and Refinish
Qtr Panel osr	Dented	Over 30mm	Repair and Refinish
Qtr Panel osr	Dented	Over 30mm	Repair and Refinish
Qtr Panel osr	Scratched	Over 25mm Not Thru Paint	Machine Polish
Door osf	Dented	Over 30mm	Repair and Refinish
Wing osf	Scratched	Over 25mm Not Thru Paint	Machine Polish
Door Mirror Assy osf	Broken	Replace	Replace
Carpets Front	Holed	Over 3mm	Replace
Seat Base Cover osf	Holed	Over 3mm	Replace
Seat Base Cover nsf	Soiled	Heavy	Replace

Vehicle Splat	Splat Key
	<p>S3 Scratch/Paint defect 100m +</p> <p>D3 Dent/damage 100mm +</p> <p>K Crack/Torn</p> <p>M Missing</p>

Damage Assessment			
	<p>Bonnet</p> <p>Dented</p> <p>Over 30mm</p> <p>Repair and Refinish</p>		<p>Bumper Front</p> <p>Scratched</p> <p>Over 100mm Thru Paint</p> <p>Refinish</p>
	<p>Wing nsf</p> <p>Dented</p> <p>Over 30% Of Panel</p> <p>Replace</p>		



**Qtr Panel
nsr**

Dented

Over
30mm

Repair
and
Refinish



**Qtr Panel
nsr**

Dented

Over
30mm

Repair
and
Refinish



**Qtr Panel
nsr**

Dented

Over
30mm

Repair
and
Refinish



**Qtr Panel
nsr**

Dented

Over
30mm

Repair
and
Refinish



**Bumper
Rear
Moulding**

Scuffed
(Unpainted)

Over
100mm

Smart
Repair



Door nsr

Dented

Over
30mm

Repair
and
Refinish



Door nsr

Dented

Over
30mm

Repair
and
Refinish



**Badgedecal
Rear**

Missing

Needs
Replaced

Replace



Door osr

Dented

Over
30mm

Repair
and
Refinish



**Qtr Panel
osr**

Scratched

Over
25mm
Thru Paint

Refinish



**Qtr Panel
osr**

Dented

Over
30mm

Repair
and
Refinish



**Qtr Panel
osr**

Dented

Over
30mm

Repair
and
Refinish



**Qtr Panel
osr**

Dented

Over
30mm

Repair
and
Refinish



**Qtr Panel
osr**

Dented

Over
30mm

Repair
and
Refinish



**Qtr Panel
osr**

Scratched

Over
25mm Not
Thru Paint

Machine
Polish



Door osf

Dented

Over
30mm

Repair
and
Refinish



Wing osf

Scratched

Over
25mm Not
Thru Paint

Machine
Polish



**Door
Mirror
Assy osf**

Broken

Needs
Replaced

Replace



**Carpets
Front**



**Seat
Base
Cover**



**Seat
Base
Cover**



Holed
Over 3mm
Replace



osf
Holed
Over 3mm
Replace



nsf
Soiled
Heavy
Replace

Comments

No mechanical inspection has been undertaken on this vehicle, any mechanical items noted are for reference only and cannot be relied on.

The details within this inspection report are correct at point of vehicle arrival. Updates, errors and omissions will be highlighted by the CVA Auctions via catalogues, the website, entry forms or by the auctioneer.