

VEHICLE INSPECTION REPORT

LS68XWL

Isuzu N 75.190

Inspection

Serious Damage? No

Vehicle

VAT Plus VAT

V5 To Follow

Details

Reg. date 08/11/2018

Colour WHITE

Gearbox AUTO

Year 2018

VIN JAANPR75KH7107051

Axle Combi 4x2

Mileage 274,446 Km Warranted

Body Style Fridge Box

Tail Lift Tuckaway

Fuel Type Diesel

Cab Type DAY CAB

DAY CAB, GAH FRIDGE UNIT, TUCKAWAY TAIL LIFT, REAR & SIDE BARN DOOR

Tyres

NSF NSI1

NSI2

NSI3

NSI4

OSF OSI1

OSI2

OSI3

OSI4

Spare NSO1

NSO2

NSO3

NSO4

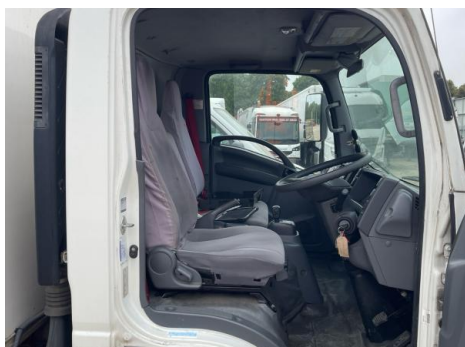
OSO1

OSO2

OSO3

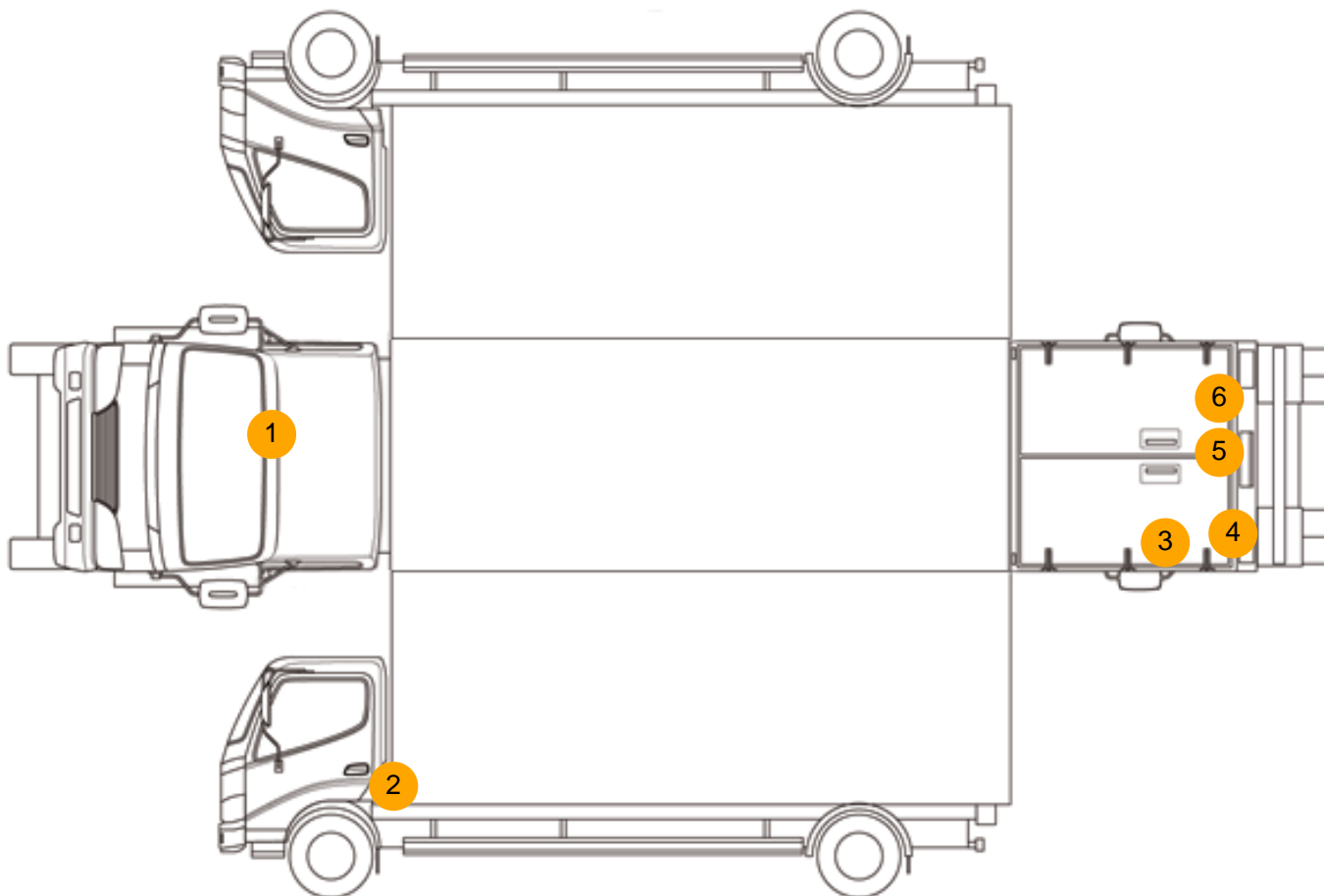
OSO4

Photos





Condition Check



Damage Photos



1: Screen Front
Chipped
UpTo 10mm



2: Door nsf
Scratched
Over 25mm Thru Paint



3: Door nsr
Hole
Over 10mm



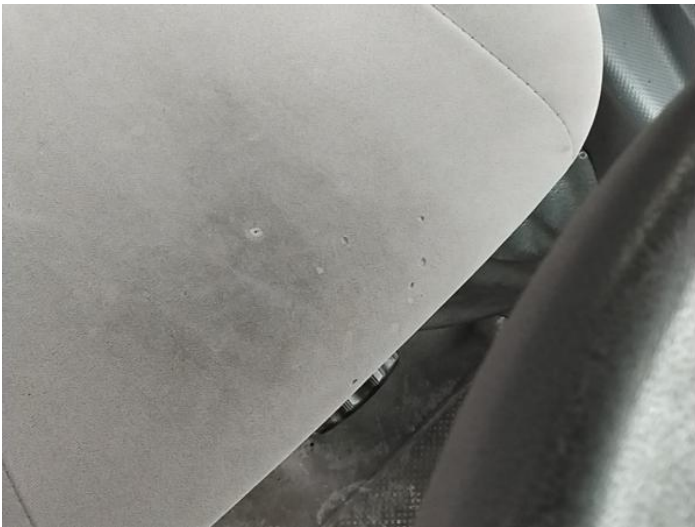
4: Door nsr
Hole
Over 10mm



5: Door osr
Rusted
Over 5mm



6: Qtr Panel osr
Dented
Over 30mm



7: Seat Base Cover osf
Holed
Over 3mm

Interior

Carpet Condition		Average	Upholstery Condition		Average
Seat Condition		Average	Odour		-
Engine Runs	OK		Gearbox 1st and Reverse Test	OK	
Brakes	OK		Clutch Slip Test from Static	OK	
Parking Brake	OK		Gearbox Static Gear Selection (engine running)	OK	
			No Excessive Smoking	OK	
EML light illuminated	OK		Oil warning light illuminated	OK	
Airbag light illuminated	OK		DPF light illuminated	OK	
ABS light illuminated	OK		Service indicator light illuminated	OK	