

VEHICLE INSPECTION REPORT

YS67VDF

Ford Transit Custom 290 2.0 TDCi 105ps

Inspection

Serious Damage? No

Vehicle

VAT Plus VAT

V5 To Follow

Details

Reg. date 11/12/2017

Year 2017

Mileage 58,975 Miles
Warranted

Fuel Type Diesel

Colour WHITE

VIN WF0YXXTTGYHK87504

Body Style Panel Van L1

MOT Due 18/12/2025

CAP Clean £5,175.00

CAP Average £4,400.00

CAP Below £3,325.00

Gearbox MANUAL

Gears 6

AD-BLUE, ROOF RACK, SIDE LOAD DOOR

Tyres

NSF

NSR

OSF

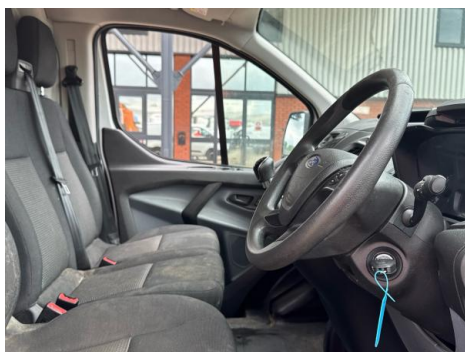
OSR

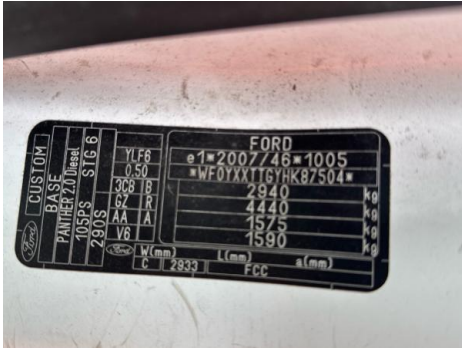
Spare

Features

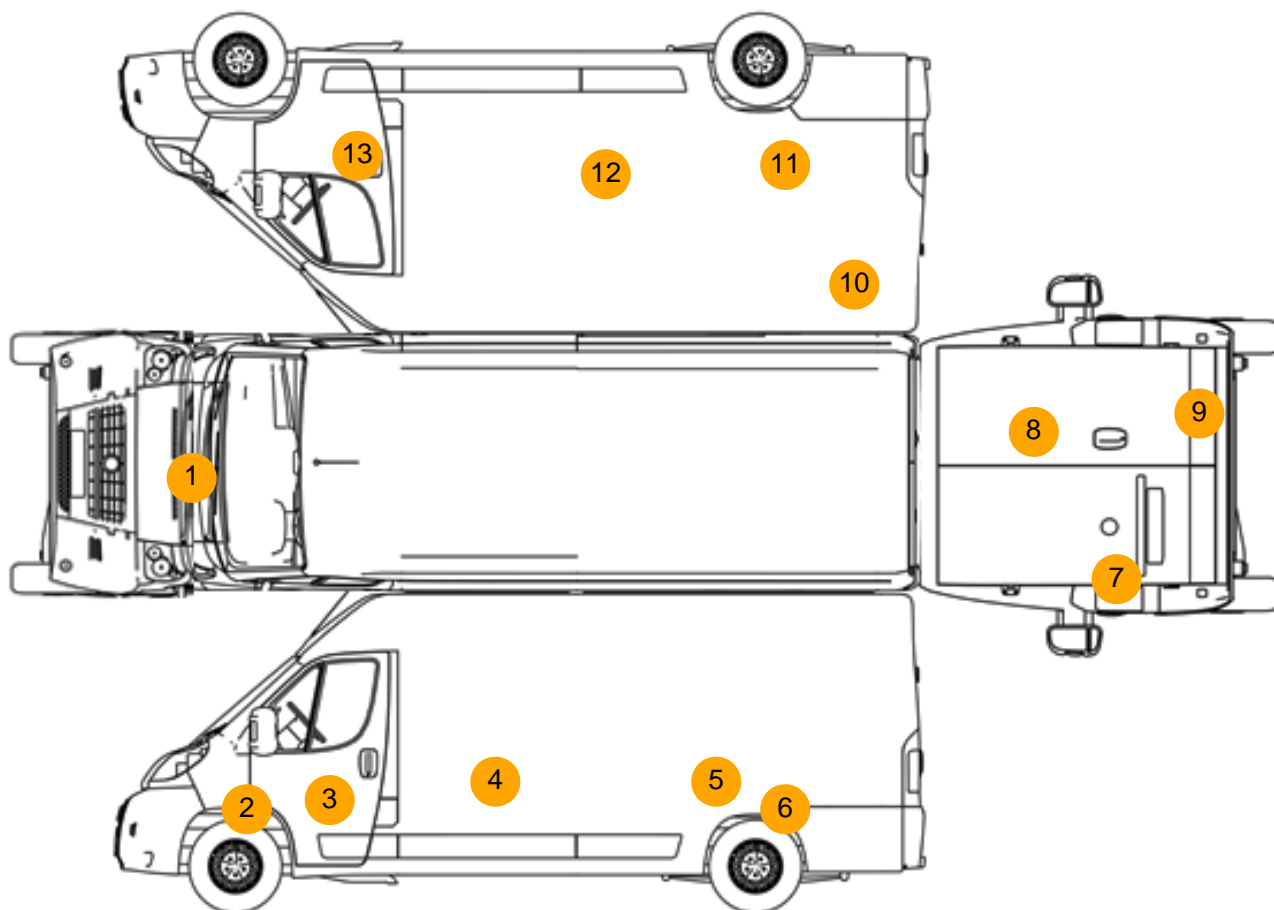
- Bluetooth connection
- Front electric windows
- Cloth seat trim
- Rear parking sensor
- Drivers airbag
- Auxiliary input socket
- Passenger airbag
- Digital radio
- Central locking

Photos





Condition Check



Damage Photos



1: Bonnet
Chipped
Multiple Chips



2: Wing nsf
Dented
Over 30mm



3: Door nsf
Scratched
Over 25mm Not Thru Paint



4: Qtr Panel nsr
Scratched
Over 25mm Not Thru Paint



5: Qtr Panel nsr
Scratched
Over 25mm Not Thru Paint



6: Qtr Panel nsr
Dented
Over 30mm



7: Door nsr
Dented
Over 30mm



8: Door osr
Chipped
Multiple Chips



9: Door osr
Dented
Over 30mm



10: Qtr Panel osr
Scratched
Over 25mm Thru Paint



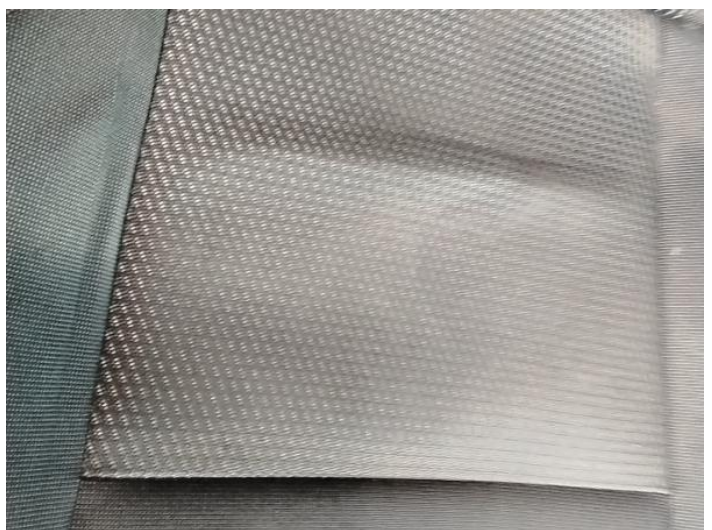
11: Qtr Panel osr
Dented
Over 30mm



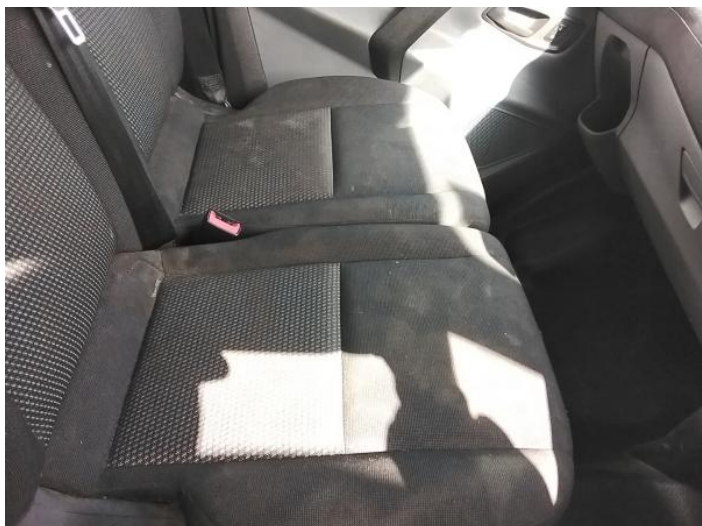
12: Qtr Panel osr
Scratched
Over 25mm Thru Paint



13: Door osf
Scratched
Over 25mm Thru Paint



14: Seat Base Cover osf
Soiled
Heavy



15: Seat Base Cover nsf
Soiled
Heavy

Interior

Carpet Condition	OK	Upholstery Condition	OK
Seat Condition	Poor	Odour	-
Engine Runs	OK	No Excessive Smoking	OK
EML light illuminated	OK	DPF light illuminated	OK
ABS light illuminated	OK		