

VEHICLE INSPECTION REPORT

NX68WBO

Iveco Daily 35-120 4100 WB

Non Runner
Inspection

Serious Damage?	No	Vehicle	
		VAT	Plus VAT
		V5	Present

Details

Reg. date	12/10/2018	VIN	ZCFC1358005233012	CAP Below	£6,675.00
Year	2018	Body Style	Access Platform	Gearbox	MANUAL
Mileage	15,707 Miles Warranted	MOT Due	06/09/2025	Gears	6
Fuel Type	Diesel	CAP Clean	£9,900.00	Axle Combi	4x2
Colour	WHITE	CAP Average	£8,525.00		

VERSALIFT VTX-240 (YEAR 2018), PLATFORM HEIGHT 24.2M, OUTRIGGERS *PTO NOT ENGAGING*

Tyres

NSF

NSR

OSF

OSR

Spare

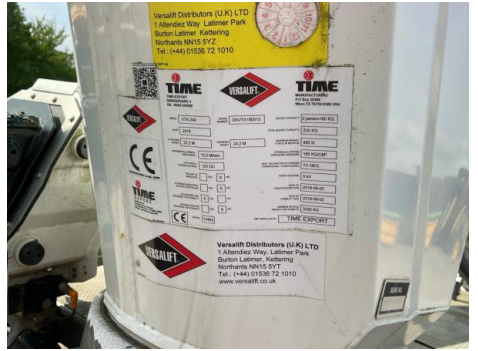
Features

- Bluetooth connection
- Radio/CD
- Front electric windows
- Drivers airbag
- Passenger airbag
- Central locking
- Cloth seat trim

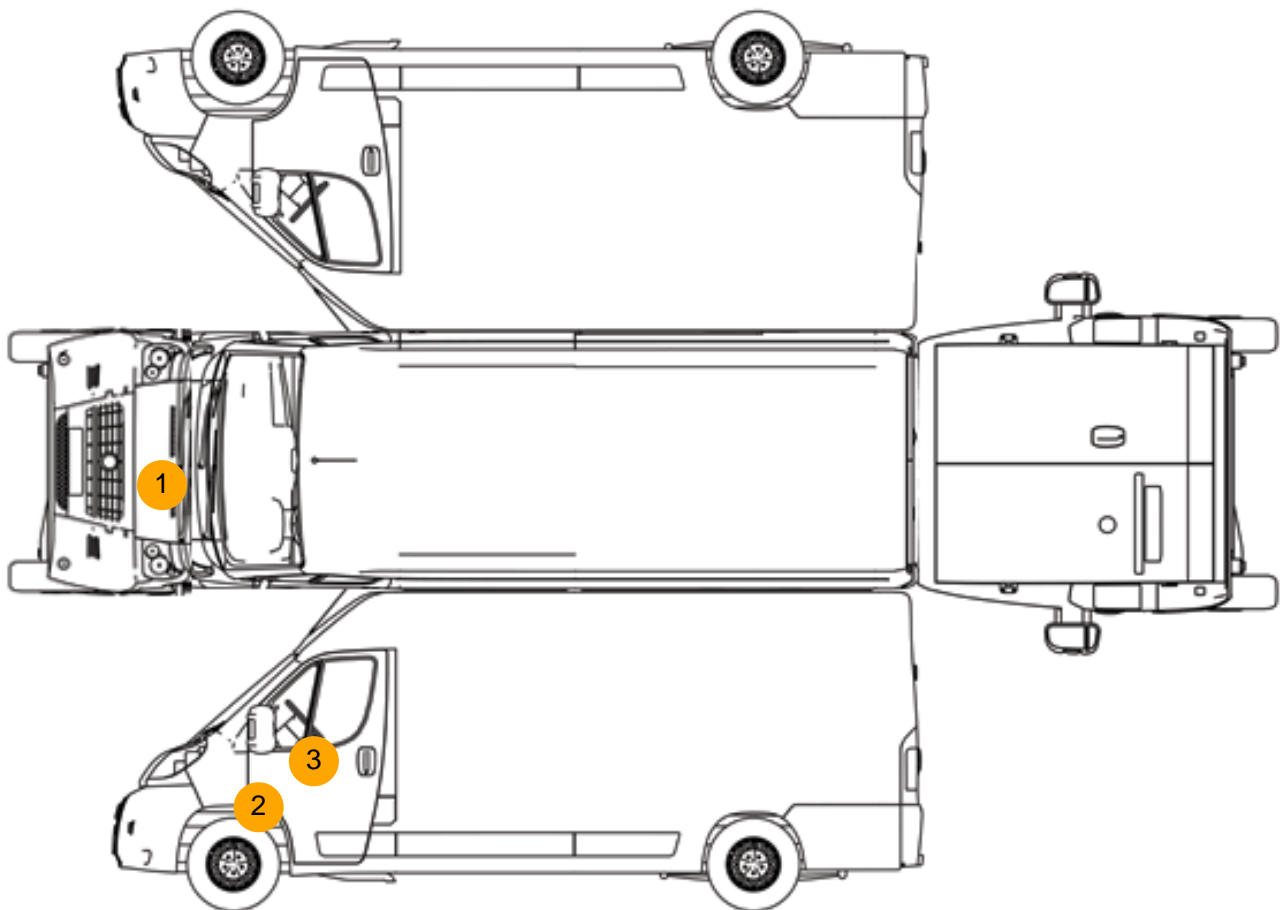
Photos







Condition Check



Damage Photos



1: Bonnet
Chipped
Multiple Chips



2: Wing nsf
Dented
Over 30mm



3: Door Mirror Assy nsf
Broken
Replace



4: Seat Base Cover osf
Soiled
Heavy



5: Dash Warning Lights
Displayed
No Action

Interior

Carpets Condition	OK	Upholstery Condition	OK
Seat Condition	Poor	Odour	-
Engine Runs		Fault	
EML light illuminated		Fault	