

VEHICLE INSPECTION REPORT

DX17ZFT

Daf LF 220 18 TONNE

Non Runner
Inspection

Serious Damage?	No	Vehicle	
		VAT	Plus VAT
		V5	Present

Details

Reg. date	06/03/2017	VIN	XLRAEL3700L457437	Rear Suspension	Air
Year	2017	Body Style	Fridge Box	Rear Doors	Roller
Mileage	313,019 Miles Warranted	Gearbox	MANUAL	Tail Lift	Tuckaway
Fuel Type	Diesel	Axle Combi	4x2		
Colour	WHITE	Steering Combi	Steer		

STARTS BUT DOES NOT DRIVE, CARRIER 1150MT FRIDGE, STANDBY PLUG

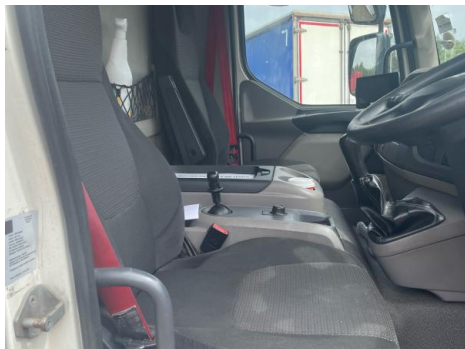
Tyres

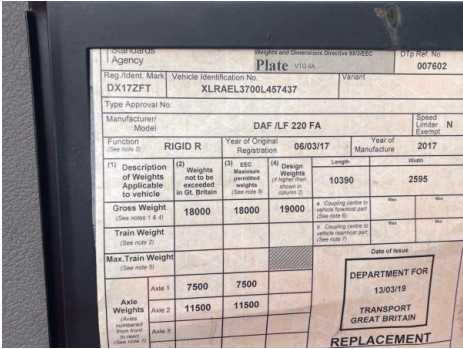
NSF	NSI1	NSI2	NSI3	NSI4
OSF	OSI1	OSI2	OSI3	OSI4
Spare	NSO1	NSO2	NSO3	NSO4
	OSO1	OSO2	OSO3	OSO4

Features

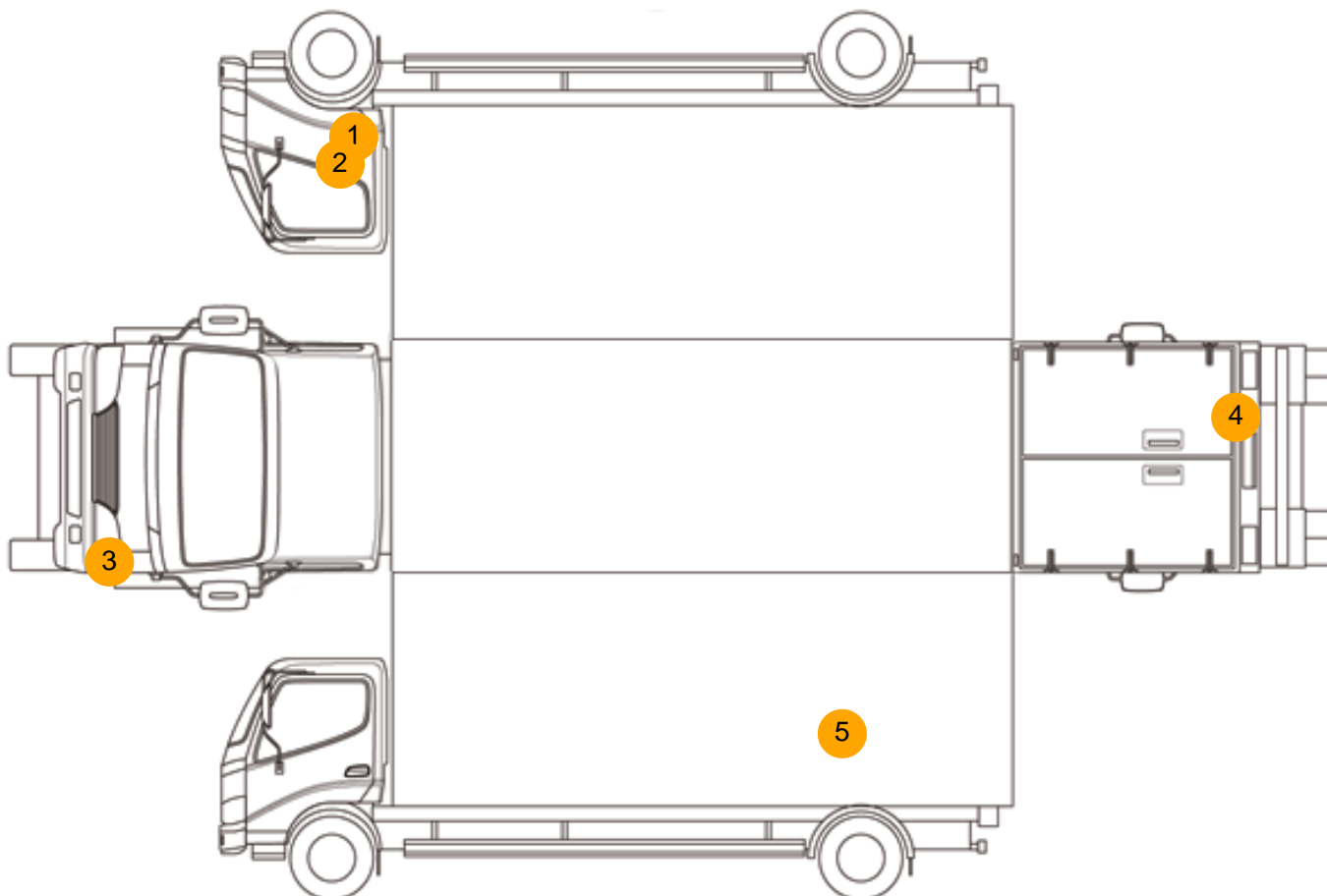
- Bluetooth connection
- Drivers airbag
- Park assist camera
- Central locking
- Radio/CD
- Cloth seat trim
- Front electric windows

Photos





Condition Check



Damage Photos



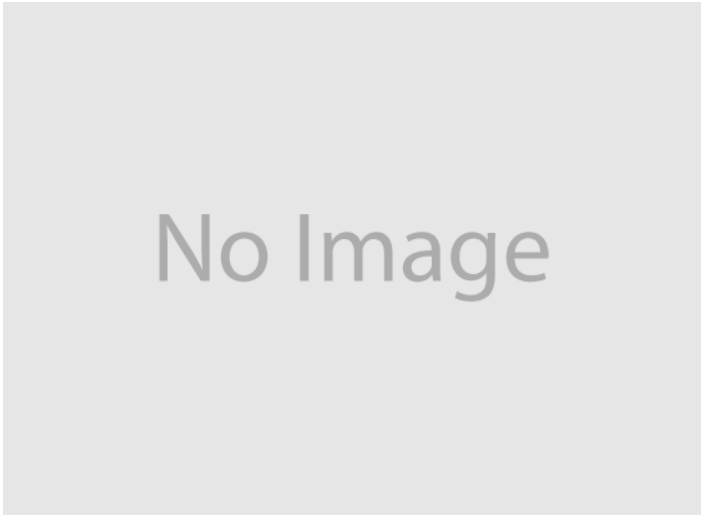
1: Door Moulding of
Scuffed (Unpainted)
Over 100mm



2: Door of
Dented
Over 30mm



3: Bumper Front
Scratched
25 to 100mm Thru Paint



4: Tailgate
Rusted
Over 5mm



5: Qtr Panel osr
Dented
Over 30mm



6:

Interior

Carpet Condition	Average	Upholstery Condition	Average
Seat Condition	Average	Odour	-
Engine Runs	OK	Gearbox 1st and Reverse Test	OK
Brakes	OK	Clutch Slip Test from Static	OK
Turbo Boosting	OK	Gearbox Static Gear Selection (engine running)	OK
Parking Brake	OK	No Excessive Smoking	OK
EML light illuminated	OK	Oil warning light illuminated	OK
Airbag light illuminated	OK	DPF light illuminated	OK
ABS light illuminated	OK	Service indicator light illuminated	OK

Windows

OK

Radio

OK

Steering

OK