

VEHICLE INSPECTION REPORT

LL69YKY

Daf LF 250

Inspection

Serious Damage? No

Vehicle

VAT Plus VAT

V5 Present

Details

Reg. date 09/12/2019

Colour YELLOW

Cab Type DAY CAB

Year 2019

VIN XLRAEL2700L490997

Gearbox MANUAL

Mileage 58,432 Km Warranted

Body Style Sweeper

Rear Suspension Steel

Fuel Type Diesel

MOT Due 31/07/2025

STARTS & RUNS DOES NOT DRIVE *WARNING LIGHT ON DASH* SCARAB BODY SWEEPER 3326 HOURS, SURROUND CAMERA SYSTEM,

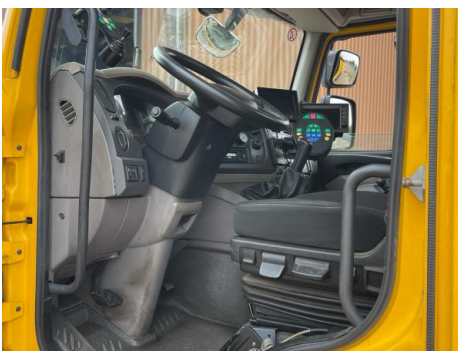
Tyres

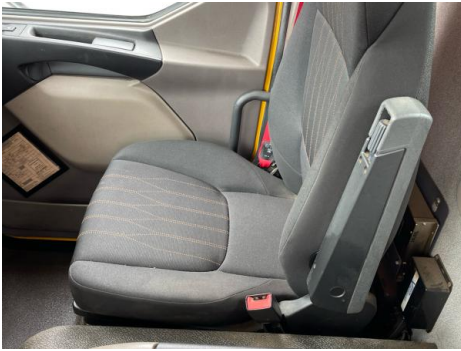
NSF	NSI1	NSI2	NSI3	NSI4
OSF	OSI1	OSI2	OSI3	OSI4
Spare	NSO1	NSO2	NSO3	NSO4
	OSO1	OSO2	OSO3	OSO4

Features

- Cruise control
- Park assist camera
- Radio/CD
- Air conditioning
- Front electric windows
- Cloth seat trim

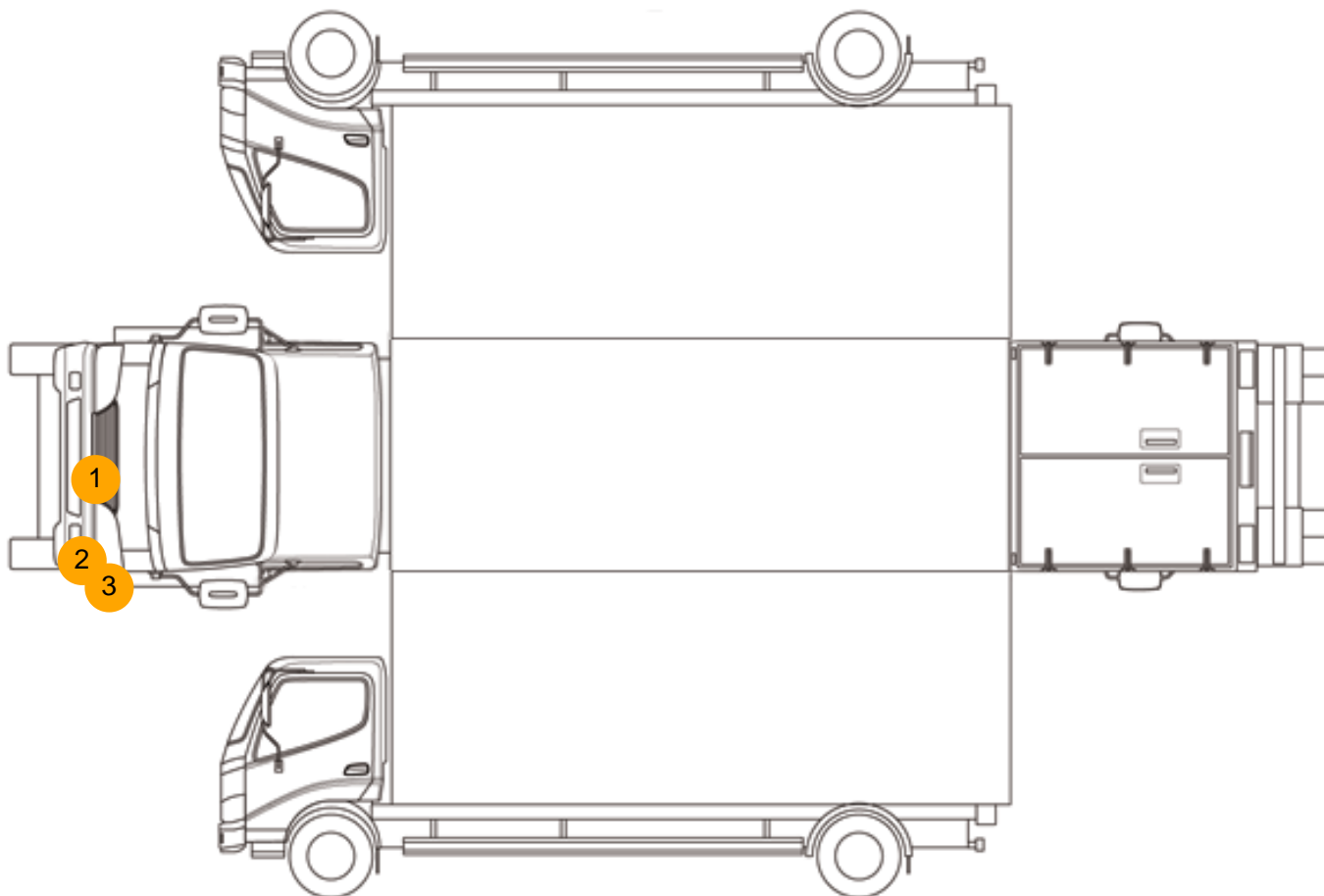
Photos







Condition Check



Damage Photos



1: Number Plate Front
Broken
Replace



2: Bumper Front
Dented
With Paint Damage



3: Bumper Front
Scratched
25 to 100mm Thru Paint



4: Dash Warning Lights
Displayed
No Action

Interior

Carpet Condition	-	Upholstery Condition	-
Seat Condition	-	Odour	-
Engine Runs	OK	Gearbox 1st and Reverse Test	Fault
		No Excessive Smoking	OK
EML light illuminated	OK	DPF light illuminated	OK
ABS light illuminated	OK		