

VEHICLE INSPECTION REPORT

PF66KJY

Daf CF 440

Inspection

Serious Damage? No

Vehicle

VAT Plus VAT

V5 Present

Details

Reg. date 23/11/2016

VIN XLRTGM4100G134525

Cab Type SLEEPER CAB

Year 2016

Body Style Tractor Unit

Gearbox AUTOMATIC

Mileage 1,285,106 Km
Warranted

Service history Yes

Axle Combi 6x2

Service documents Printout

Steering Combi Mid-Lif Steert

Fuel Type Diesel

MOT Due Expired

Rear Suspension Air

Colour RED

COLLECTED AS NON RUNNER - CORROSION

Tyres

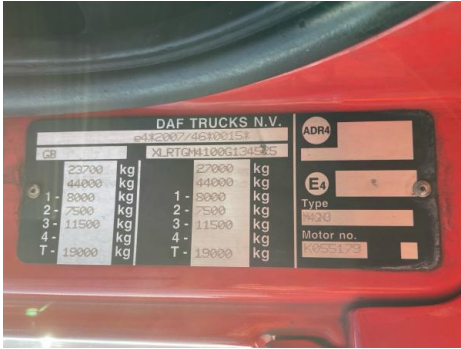
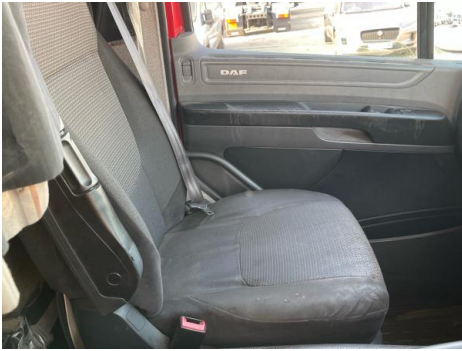
NSF	NSI1	NSI2	NSI3	NSI4
OSF	OSI1	OSI2	OSI3	OSI4
Spare	NSO1	NSO2	NSO3	NSO4
	OSO1	OSO2	OSO3	OSO4

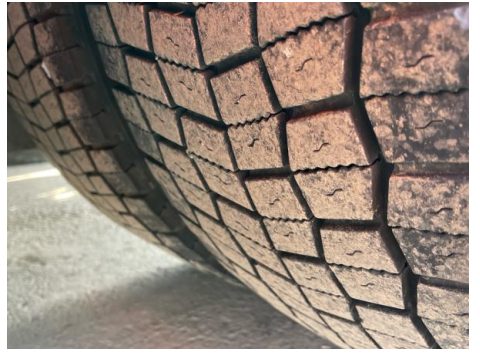
Features

- Radio/CD
- Manual sunroof
- Air conditioning
- Front electric windows
- Central locking
- Cloth seat trim

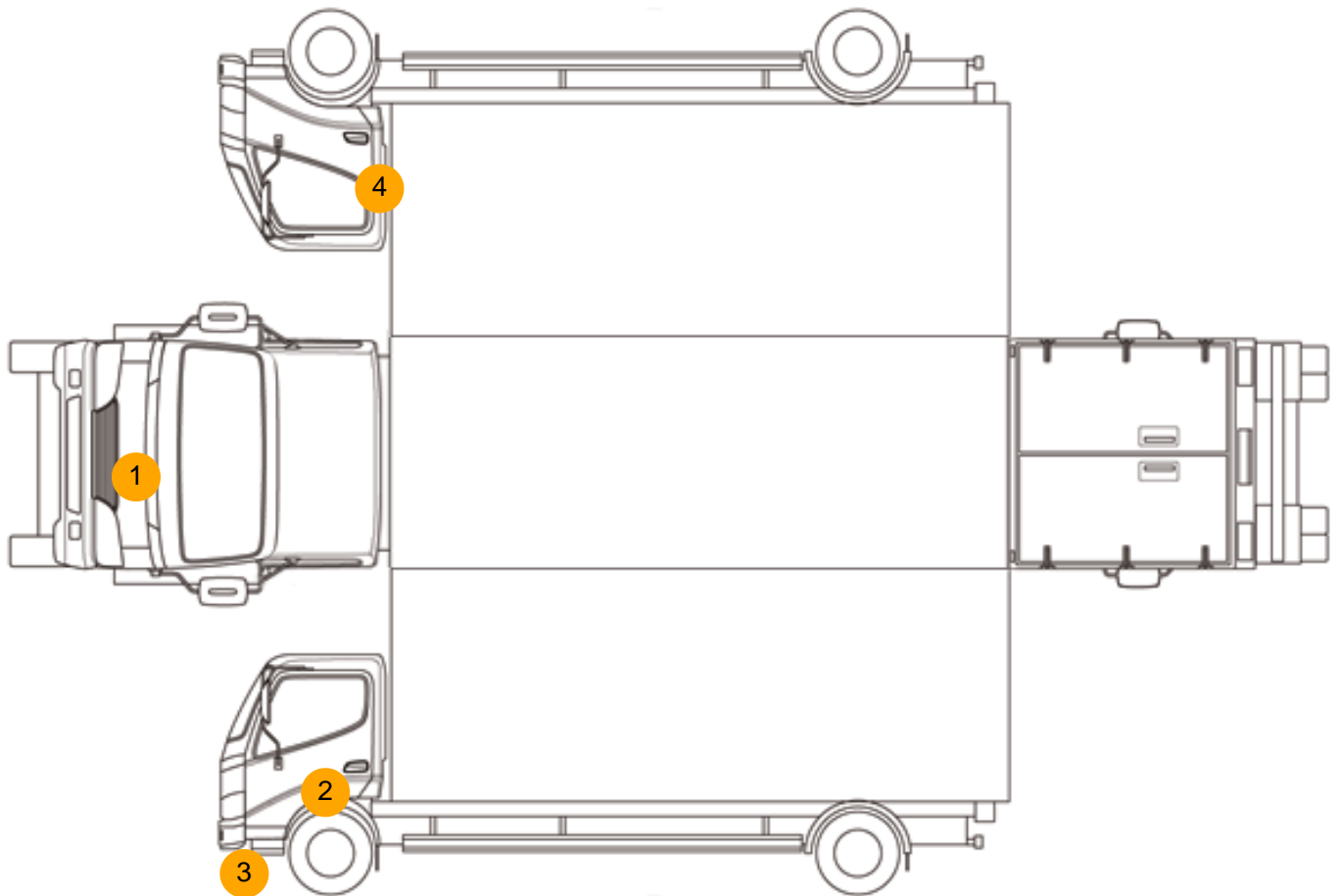
Photos







Condition Check



Damage Photos



1: Bonnet
Chipped
Multiple Chips



2: Door nsf
Scratched
Over 25mm Thru Paint



3: Bumper Front
Dented
Over 30mm



4: Door osf
Scratched
Over 25mm Not Thru Paint

Interior

Carpet Condition	OK	Upholstery Condition	OK
Seat Condition	OK	Odour	-
Engine Runs	OK	No Excessive Smoking	OK
EML light illuminated	OK	DPF light illuminated	OK
ABS light illuminated	OK		