

VEHICLE INSPECTION REPORT

WX18XPF

Mercedes-Benz Sprinter 314 CDI

Inspection

Serious Damage? No

Vehicle

VAT Plus VAT

V5 To Follow

Details

Reg. date 11/05/2018

Year 2018

Mileage 137,491 Miles
Warranted

Fuel Type Diesel

Colour WHITE

VIN WDB9061352N726708

Body Style Luton LWB

MOT Due Expired

CAP Clean £7,400.00

CAP Average £6,350.00

CAP Below £4,950.00

Gearbox MANUAL

Axle Combi 4x2

Tail Lift Column

A/C, E/WINDOWS, COLUMN TAIL LIFT

WARNING LIGHT ON DASH

Tyres

NSF

NSR

OSF

OSR

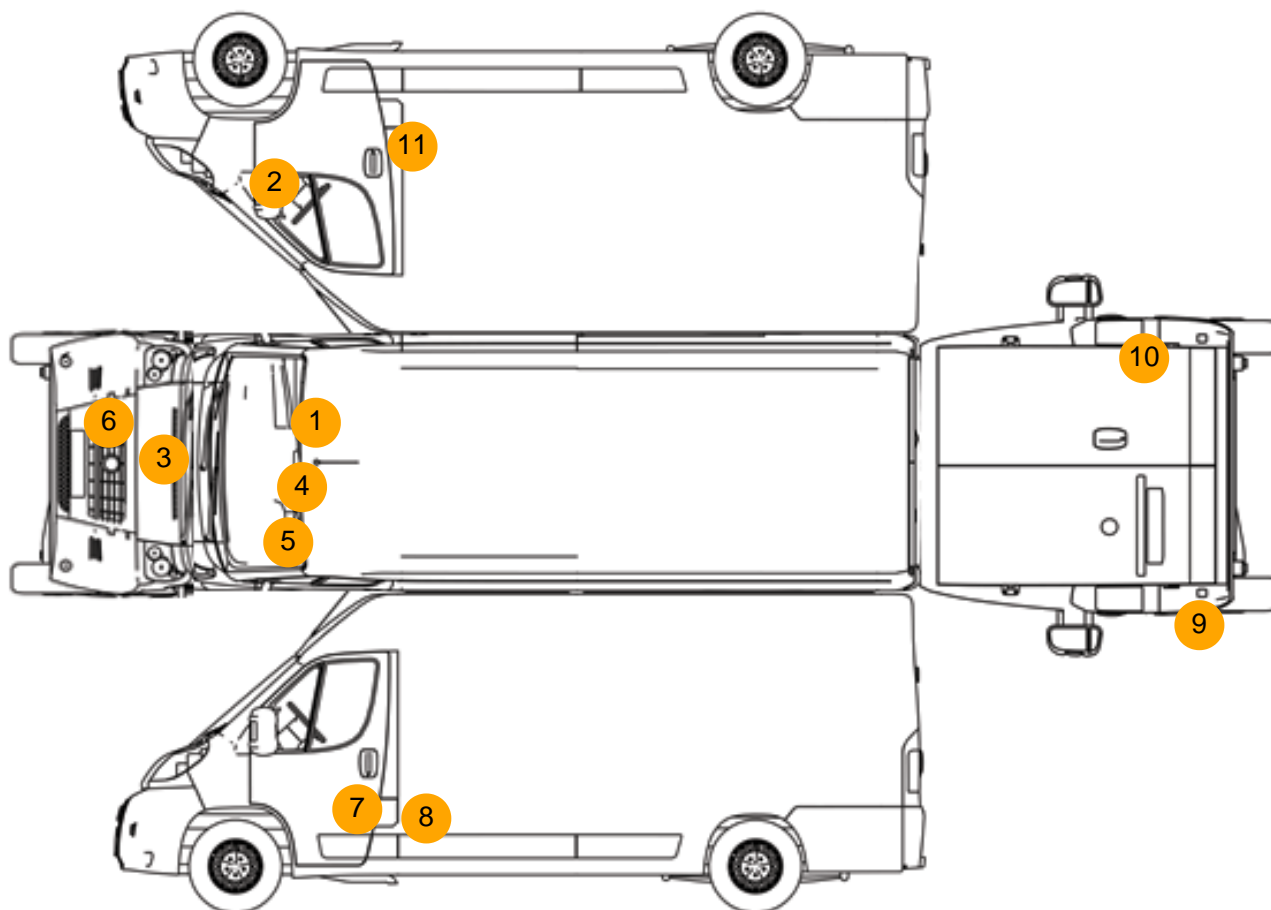
Spare

Photos





Condition Check



Damage Photos



1: Screen Front
Chipped
Over 10mm



2: Wing osf
Chipped
Multiple Chips



3: Panel Front
Dented
Over 30mm



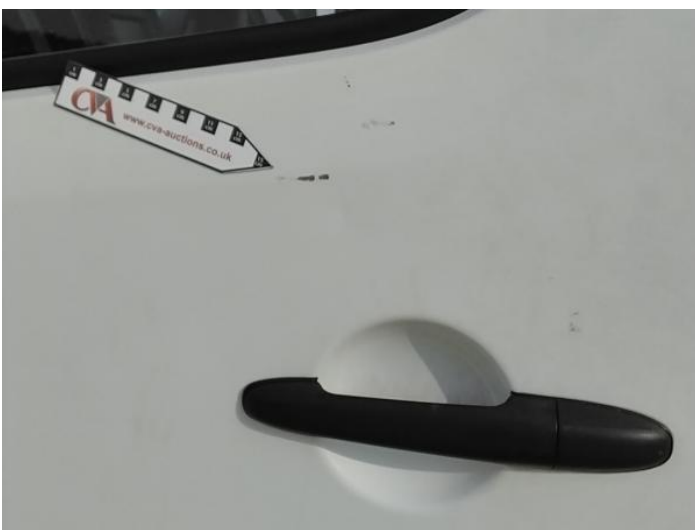
4: Screen Front
Chipped
Over 10mm



5: Screen Front
Chipped
Over 10mm



6: Bumper Front
Hole
Over 25mm



7: Door nsf
Scratched
Over 25mm Thru Paint



8: General Exterior
Soiled
Light



9: Lamp nsr
Broken
Replace



10: Lamp osr
Broken
Replace



11: B Post os
Rusted
Over 5mm



12: Seat Base Cover osf
Holed
Over 3mm



13: Seat Base Cover nsf
Holed
Over 3mm

Interior

Carpet Condition	Average	Upholstery Condition	Average
Seat Condition	Average	Odour	No
Engine Runs	OK	Gearbox 1st and Reverse Test	OK
Brakes	OK	Clutch Slip Test from Static	OK
Parking Brake	OK	Gearbox Static Gear Selection (engine running)	OK
		No Excessive Smoking	OK
EML light illuminated	Fault	Oil warning light illuminated	OK
Airbag light illuminated	OK	DPF light illuminated	OK
ABS light illuminated	OK	Service indicator light illuminated	OK