



**COMMERCIAL VEHICLE AUCTIONS LTD**  
THE UK'S MOST ESTABLISHED COMMERCIAL VEHICLE AUCTIONEERS

Carr Hill Industrial Estate  
Doncaster  
DN4 8DE

01302 732600 | cva.noreply@cva-auctions.co.uk

# VEHICLE INSPECTION REPORT

**BT15TUV**

## Iveco Daily 70C17

Inspection		Vehicle	
Serious Damage?	No	VAT	Plus VAT
		V5	Present

Details					
Reg. date	15/06/2015	VIN	ZCFC270C405011962	Gearbox	MANUAL
Year	2015	Body Style	Panel Van	Axle Combi	4x2
Mileage	186,249 Km Warranted	Service history	Yes	Rear Suspension	Steel
Fuel Type	Diesel	MOT Due	31/08/2026		
Colour	WHITE	Cab Type	DAY CAB		

\*COLLECTED AS NON -RUNNER, WORN TURBO, STEERING RACK, DISCS AND REAR PAD ISSUES, INPUT ERROR ON MOT MILEAGE HISTORY\*

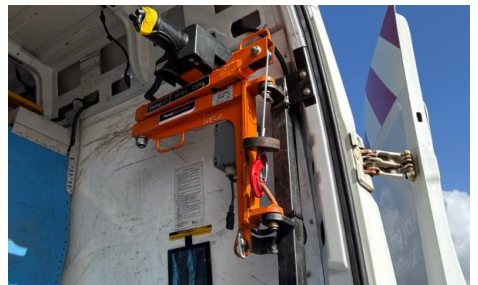
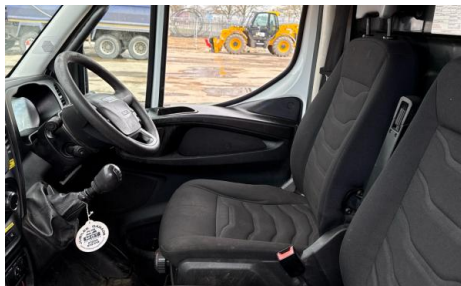
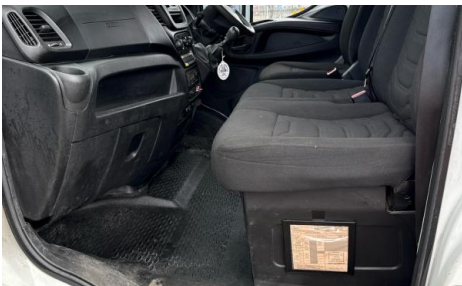
Tyres				
NSF	NSI1	NSI2	NSI3	NSI4
OSF	OSI1	OSI2	OSI3	OSI4
Spare	NSO1	NSO2	NSO3	NSO4
	OSO1	OSO2	OSO3	OSO4

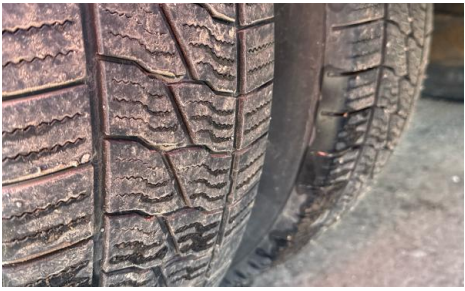
## Features

- Bluetooth connection
- Radio/CD
- Central locking
- Cruise control
- Front electric windows
- Cloth seat trim
- Rear parking sensor
- Drivers airbag
- Digital radio
- Passenger airbag

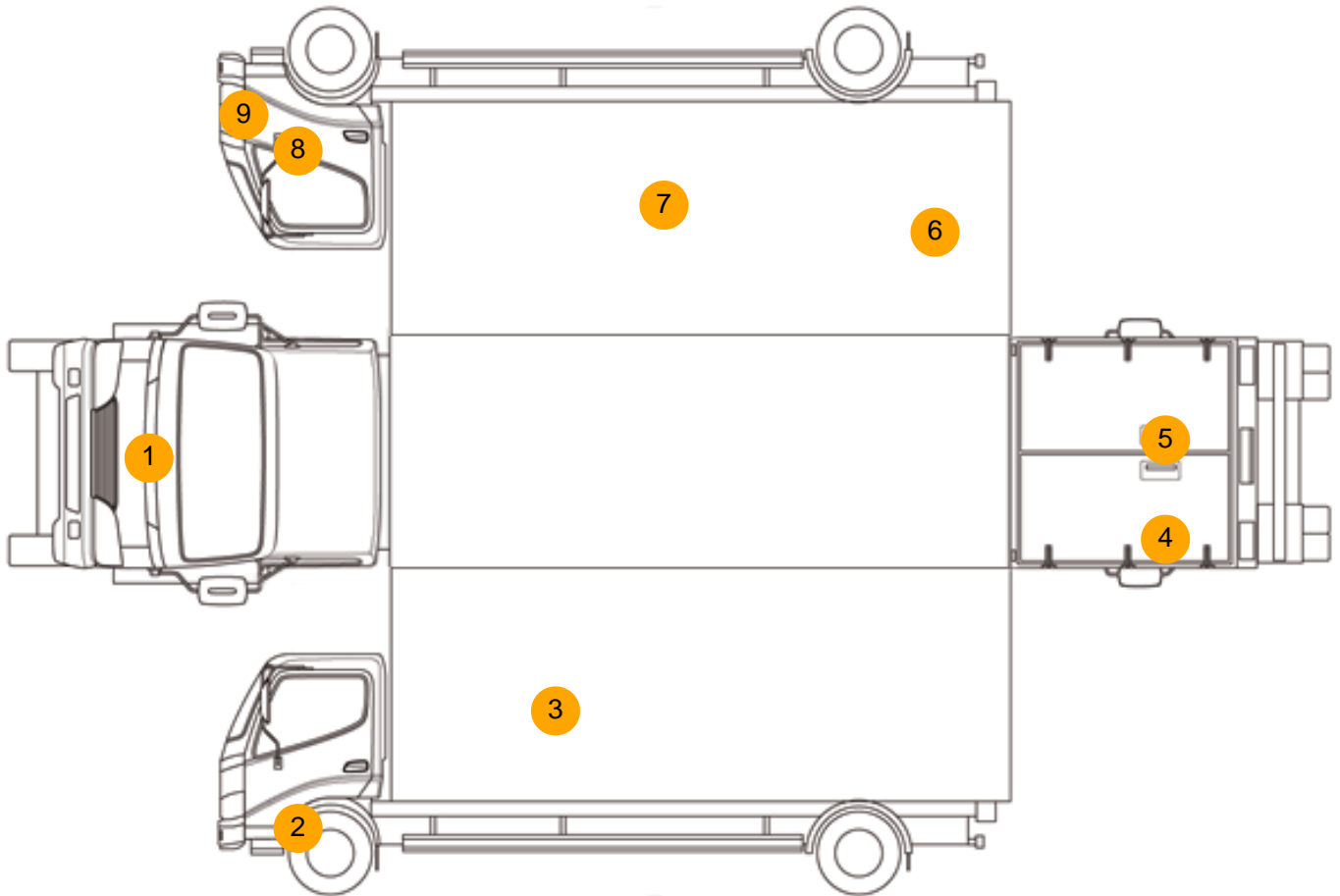
## Photos







## Condition Check



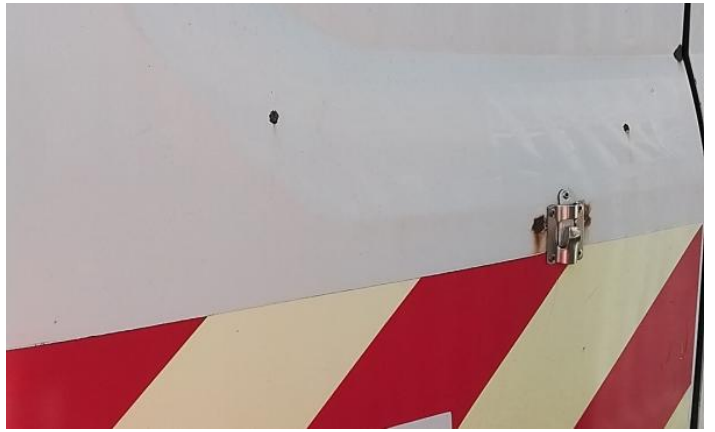
## Damage Photos



1: Bonnet  
Chipped  
Multiple Chips



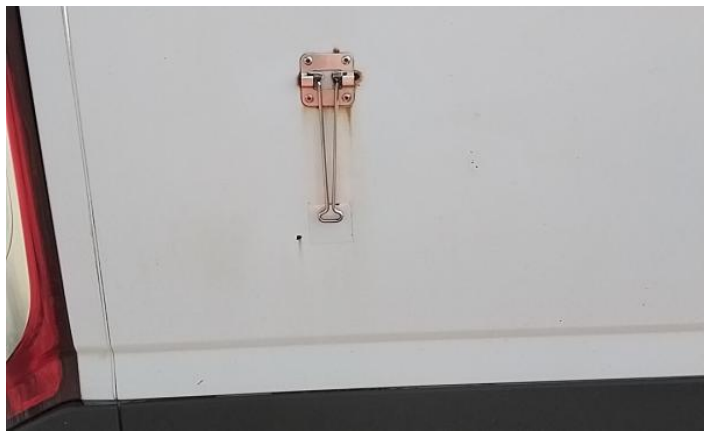
2: Wing nsf  
Dented  
With Paint Damage



3: Qtr Panel nsr  
Dented  
With Paint Damage



4: Door nsr  
Chipped  
Multiple Chips



5: Door osr  
Dented  
Over 30mm



6: Qtr Panel osr  
Chipped  
Multiple Chips



7: Qtr Panel osr  
Chipped  
Multiple Chips

8: Door osf  
Dented  
Over 30mm



9: Bumper Front  
 Scratched  
 Over 100mm Thru Paint

10: Seat Base Cover of  
 Torn  
 Over 3mm

**Interior**

**Carpet Condition**

OK

**Seat Condition**

Poor

**Upholstery Condition**

OK

**Odour**

-

Engine Runs	OK	No Excessive Smoking	OK
EML light illuminated	OK	DPF light illuminated	OK
ABS light illuminated	OK		