



COMMERCIAL VEHICLE AUCTIONS LTD
THE UK'S MOST ESTABLISHED COMMERCIAL VEHICLE AUCTIONEERS

Carr Hill Industrial Estate
Doncaster
DN4 8DE

01302 732600 | cva.noreply@cva-auctions.co.uk

VEHICLE INSPECTION REPORT

C447896

SDC - LAWRENCE DAVID CURTAINSIDE

Inspection

Vehicle

VAT	Plus VAT
V5	N/A

Details

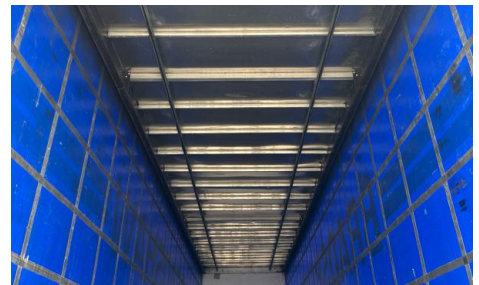
Reg. date	01/01/2017	Colour	BLUE	Axle Combi	Tri
Year	2017	VIN	SDCPL45S300151714	Rear Suspension	Air
Fleet Number	306	Body Style	Trailer	Rear Doors	Barn
Mileage	Not Showing	MOT Due	28/02/2027		
Fuel Type		Brakes	Drum		

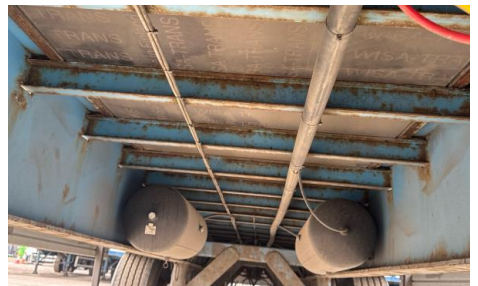
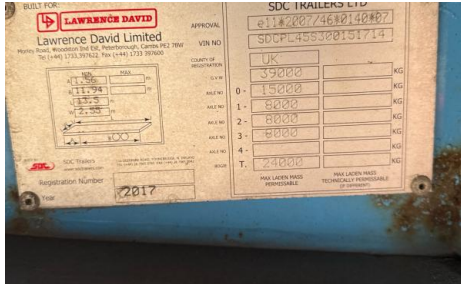
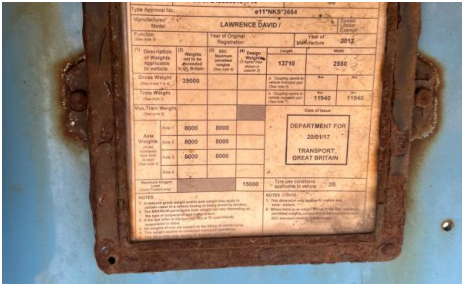
SAF AXLES, RAISE & LOWER VALVE, FERRY LASHING RINGS , ENXL RATED

Tyres

NSF
NSR
OSF
OSR
Spare

Photos







Vehicle body in compliance with	EN 12642 - XL
Lawrence David Ltd	2017