



**COMMERCIAL VEHICLE AUCTIONS LTD**  
THE UK'S MOST ESTABLISHED COMMERCIAL VEHICLE AUCTIONEERS

Carr Hill Industrial Estate  
 Doncaster  
 DN4 8DE

01302 732600 | [cva.noreply@cva-auctions.co.uk](mailto:cva.noreply@cva-auctions.co.uk)

# VEHICLE INSPECTION REPORT

**C376060**

## GRAY & ADAMS FRIDGE BOX

### Inspection

### Vehicle

VAT	Plus VAT
V5	N/A

### Details

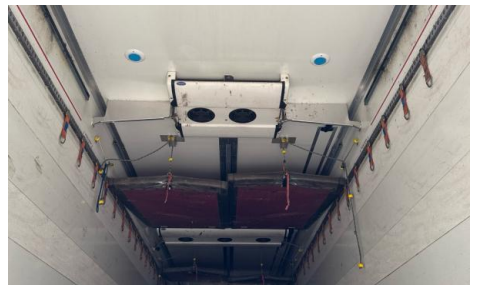
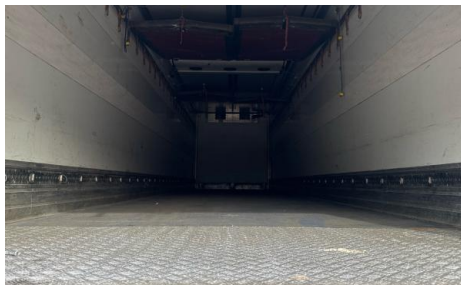
Reg. date	01/01/2014	Colour	WHITE	Axle Combi	Tri
Year	2014	VIN	SMXDA3BFSEN033648	Rear Suspension	Air
Mileage	Not Showing	Body Style	Trailer	Rear Doors	Roller
Fuel Type		Brakes	Drum	Tail Lift	Tuckaway

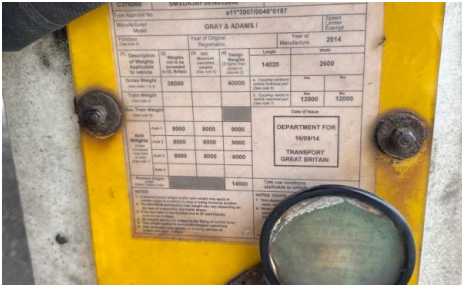
BPW AXLES, CARRIER VECTOR 1950MT UNIT, TWIN EVAPS, PARTITION DOOR, STANDBY PLUG, RAISE & LOWER VALVE, FERRY LASHING RINGS

### Tyres

NSF
NSR
OSF
OSR
Spare

### Photos





Description of Goods		Quantity	Unit	Weight	Value
1	8000	8000	8000	14000	2800
2	8000	8000	8000	14000	2800
3	8000	8000	8000	14000	2800
4	8000	8000	8000	14000	2800
5	8000	8000	8000	14000	2800
6	8000	8000	8000	14000	2800
7	8000	8000	8000	14000	2800
8	8000	8000	8000	14000	2800
9	8000	8000	8000	14000	2800
10	8000	8000	8000	14000	2800

DEPARTMENT FOR TRANSPORT GREAT BRITAIN

