

VEHICLE INSPECTION REPORT

DK65XGD

Mercedes-Benz ANTOS 1824

Inspection

Serious Damage? No

Vehicle

VAT Plus VAT

V5 Present

Details

Reg. date 02/09/2015

VIN WDB9630032L950574

Gearbox AUTOMATIC

Year 2015

Body Style Curtainside

Axle Combi 4x2

Mileage 395,118 Km Not Warranted

Service history Yes

Rear Suspension Steel

MOT Due 31/12/2025

Rear Doors Barn

Fuel Type Diesel

Cab Type DAY CAB

Tail Lift Tuckaway

Colour BLUE

SURROUND CAMERA SYSTEM

Tyres

NSF NSI1

NSI2

NSI3

NSI4

OSF OSI1

OSI2

OSI3

OSI4

Spare NSO1

NSO2

NSO3

NSO4

OSO1

OSO2

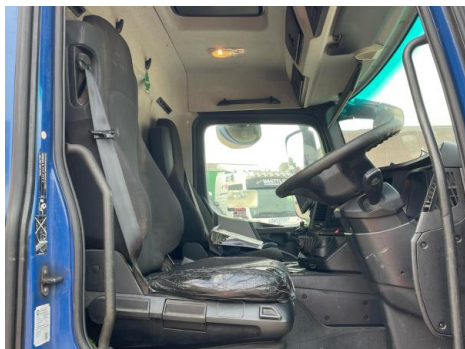
OSO3

OSO4

Features

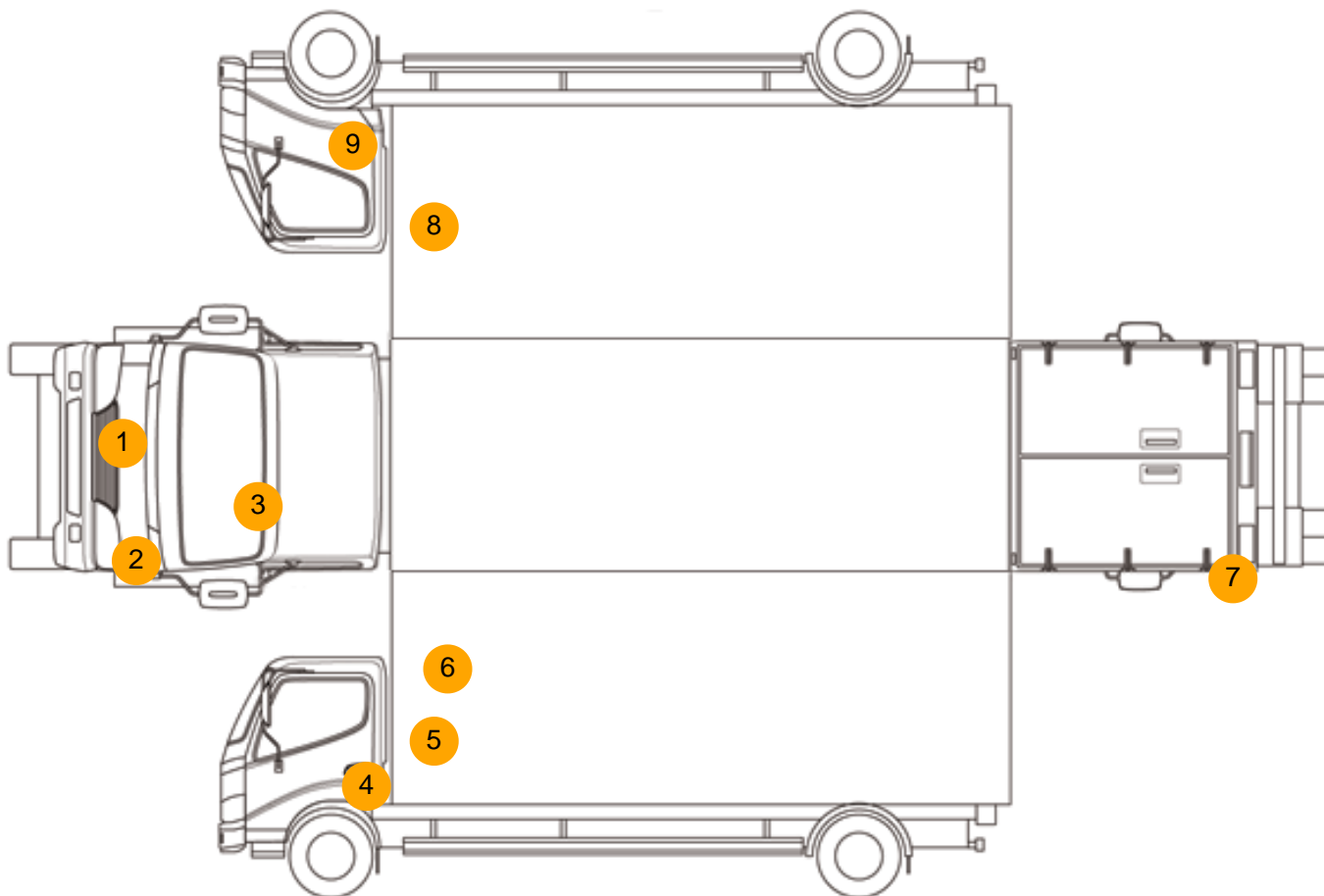
- Park assist camera
- Air conditioning

Photos





Condition Check



Damage Photos



1: Bumper Front
Cracked
Over 25mm



2: Bumper Front
Cracked
Over 25mm



3: Screen Front
Chipped
Over 10mm



4: Door nsf
Scratched
Over 25mm Thru Paint



5: C Post ns
Scratched
Over 25mm Thru Paint



6: General Exterior
Soiled
Light



7: Door nsr
Rusted
Over 5mm



8: C Post os
Scratched
Over 25mm Thru Paint



9: Wing osf
Poor Previous Repair
Poor Colour



10: Seat Base Cover osf
Torn
Over 3mm

Interior

Carpet Condition		Average	Upholstery Condition		Average
Seat Condition		Average	Odour		-
Engine Runs	OK		Gearbox 1st and Reverse Test	OK	
Brakes	OK		Clutch Slip Test from Static	OK	
Parking Brake	OK		Gearbox Static Gear Selection (engine running)	OK	
			No Excessive Smoking	OK	
EML light illuminated	OK		Oil warning light illuminated	OK	
Airbag light illuminated	OK		DPF light illuminated	OK	
ABS light illuminated	OK		Service indicator light illuminated	OK	