



**COMMERCIAL VEHICLE AUCTIONS LTD**  
THE UK'S MOST ESTABLISHED COMMERCIAL VEHICLE AUCTIONEERS

Carr Hill Industrial Estate  
Doncaster  
DN4 8DE

01302 732600 | cva.noreply@cva-auctions.co.uk

# VEHICLE INSPECTION REPORT

**SV65JXS**

## MERCEDES-BENZ AROCS 3236

### Inspection

### Vehicle

VAT	Plus VAT
V5	Present

### Details

Reg. date	31/12/2015	Colour	WHITE	Gearbox	AUTOMATIC
Year	2015	VIN	WDB96423020001722	Axle Combi	8x4
Mileage	380,529 Miles Warranted	Body Style	Hookloader	Rear Suspension	Steel
Fuel Type	Diesel	MOT Due	31/07/2026		

\*WARNING LIGHTS ON DASH\* HIAB MULTILIFT GEAR

### Tyres

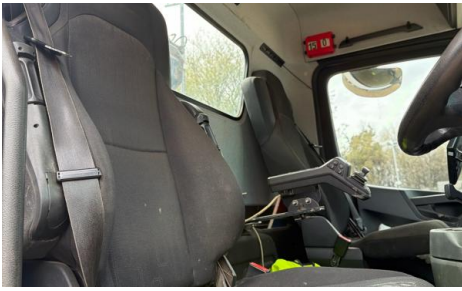
NSF
NSR
OSF
OSR
Spare

## Features

- Bluetooth connection
- Cruise control
- Park assist camera
- Air conditioning
- Cloth seat trim

## Photos





Function	RIGID	Type of Original Suspension	Year Manufacture	Year
13 Description of Weights Applicable to Vehicle	13	13	31/12/15	2015
14 Gross Weight (See note 1)	32000	32000	9220	2020
15 Train Weight (See note 1)	44000	49000		
16 Max Train Weight (See note 1)				
17 Axle Weights (See note 1)				
17.1 Axle 1	8000	8000		
17.2 Axle 2	8000	9000		
17.3 Axle 3	9500	9500		
17.4 Axle 4	9500	9500		
18 Max Axle Weight (See note 1)				
19 Max Axle Weight (See note 1)				

DEPARTMENT FOR TRANSPORT GREAT BRITAIN  
REPLACEMENT

NOTES (Cont)

1 The figures are rounded to the nearest whole number.

2 The figures are rounded to the nearest whole number.

3 The figures are rounded to the nearest whole number.

4 The figures are rounded to the nearest whole number.

5 The figures are rounded to the nearest whole number.

6 The figures are rounded to the nearest whole number.

7 The figures are rounded to the nearest whole number.

8 The figures are rounded to the nearest whole number.

9 The figures are rounded to the nearest whole number.

10 The figures are rounded to the nearest whole number.

11 The figures are rounded to the nearest whole number.

12 The figures are rounded to the nearest whole number.

13 The figures are rounded to the nearest whole number.

14 The figures are rounded to the nearest whole number.

15 The figures are rounded to the nearest whole number.

16 The figures are rounded to the nearest whole number.

17 The figures are rounded to the nearest whole number.

18 The figures are rounded to the nearest whole number.

19 The figures are rounded to the nearest whole number.



