

VEHICLE INSPECTION REPORT

DG16DVY

Man TGS 26.360

Inspection

Serious Damage? No

Vehicle

VAT Plus VAT

V5 To Follow

Details

Reg. date	16/05/2016	VIN	WMA18SZZXGW214207	Axle Combi	6x2
Year	2016	Body Style	Curtainside	Steering Combi	Rear-Lift Steer
Mileage	454,910 Km Warranted	MOT Due	28/02/2026	Rear Suspension	Steel
Fuel Type	Diesel	Cab Type	DAY CAB	Rear Doors	Barn
Colour	BLUE	Gearbox	MANUAL		

MOFFETT KIT, SURROUND CAMERA SYSTEM, BEEN ON FULL R&M CONTRACT FROM NEW

Tyres

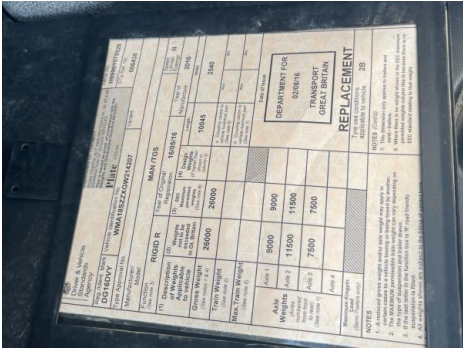
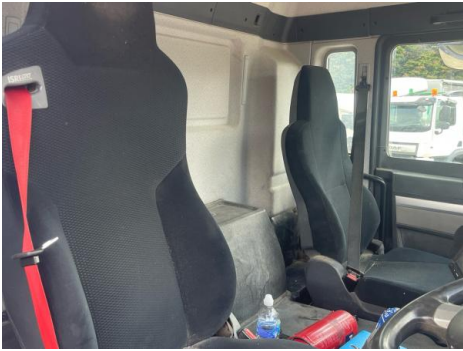
NSF	NSI1	NSI2	NSI3	NSI4
OSF	OSI1	OSI2	OSI3	OSI4
Spare	NSO1	NSO2	NSO3	NSO4
	OSO1	OSO2	OSO3	OSO4

Features

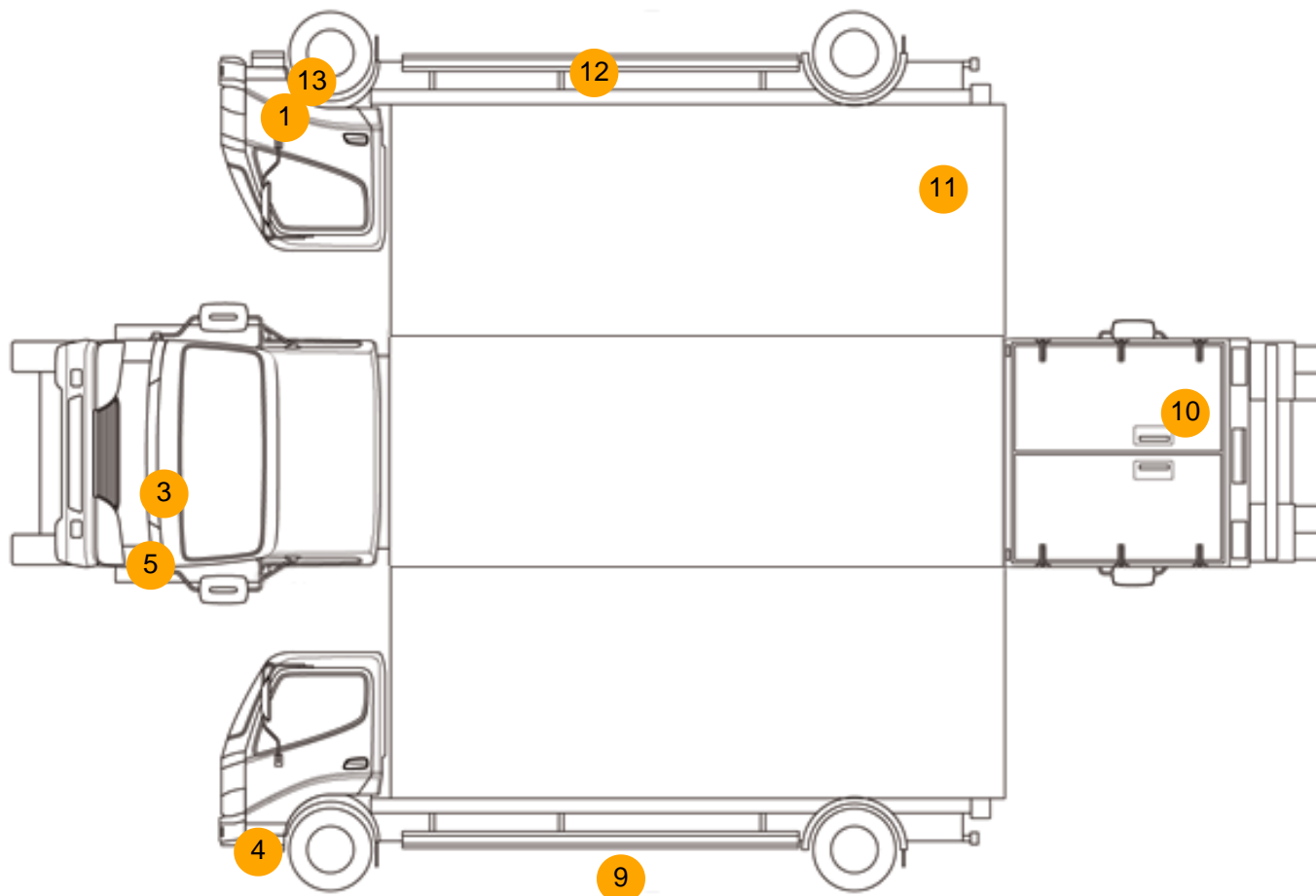
- Park assist camera

Photos





Condition Check



Damage Photos



1: Bumper Front
Scratched
Over 25mm Not Thru Paint



2: Moulding of Wing
Scratched (Painted)
Over 25mm Thru Paint



3: Bonnet
Scratched
UpTo 25mm Thru Paint



4: Bumper Front
Scratched
Over 25mm Not Thru Paint



5: Moulding nsf Wing
Broken
Replace



6: General Exterior
Soiled
Light



7: Door Mirror Assy nsf
Missing
Replace



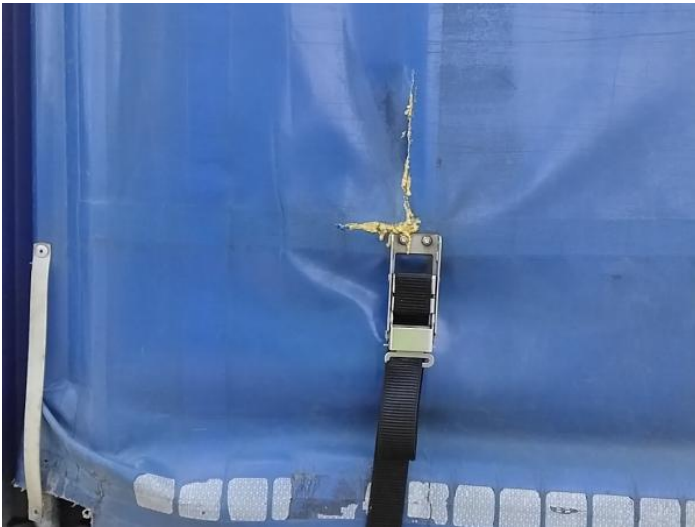
8: General Exterior
Soiled
Light



9: General Exterior
Soiled
Light



10: Door osr
Hole
Over 10mm



11: General Exterior
Soiled
Light



12: General Exterior
Soiled
Light



13: General Exterior
Soiled
Light



14: Seat Base Cover osf
Holed
Over 3mm

Interior

Carpet Condition	Average	Upholstery Condition	Average
Seat Condition	Average	Odour	-
Engine Runs	OK	Gearbox 1st and Reverse Test	OK
Brakes	OK	Clutch Slip Test from Static	OK
Parking Brake	OK	Gearbox Static Gear Selection (engine running)	OK
		No Excessive Smoking	OK
EML light illuminated	OK	Oil warning light illuminated	OK
Airbag light illuminated	OK	DPF light illuminated	OK
ABS light illuminated	OK	Service indicator light illuminated	OK