



**COMMERCIAL VEHICLE AUCTIONS LTD**  
THE UK'S MOST ESTABLISHED COMMERCIAL VEHICLE AUCTIONEERS

Carr Hill Industrial Estate  
Doncaster  
DN4 8DE

01302 732600 | cva.noreply@cva-auctions.co.uk

# VEHICLE INSPECTION REPORT

**YH16NOU**

## Ford Transit 350 2.2 TDCi 155PS

**Non Runner**

Inspection		Vehicle	
Serious Damage?	No	VAT	Plus VAT
		V5	Present

### Details

Reg. date	04/05/2016	Colour	WHITE	CAP Clean	£3,000.00
Year	2016	VIN	WF0XXXTTGXFM07365	CAP Average	£2,450.00
Mileage	163,741 Miles Warranted	Body Style	Panel Van L3	CAP Below	£1,775.00
Fuel Type	Diesel	Service history	Yes	Gearbox	MANUAL
GVW	3500kg	MOT Due	13/07/2026	Gears	6

\*NON-RUNNER, DOES NOT START OR DRIVE, ENGINE PART STRIPPED\* SIDE LOAD DOOR, TOW BAR, E/MIRRORS.

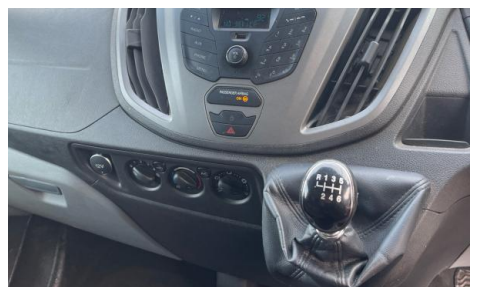
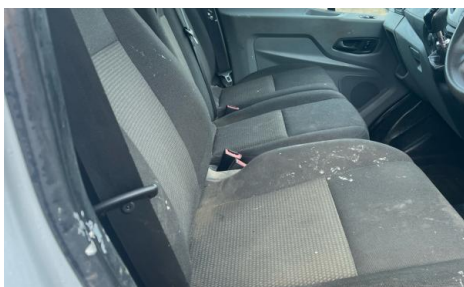
### Tyres

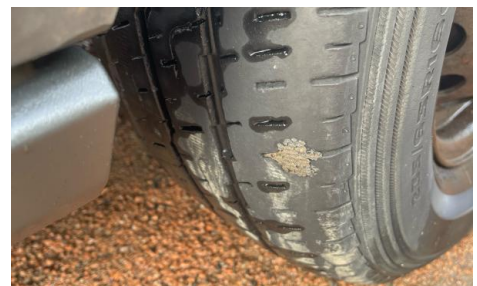
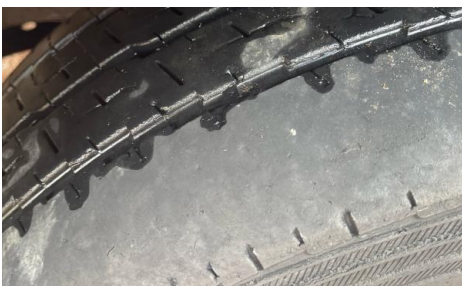
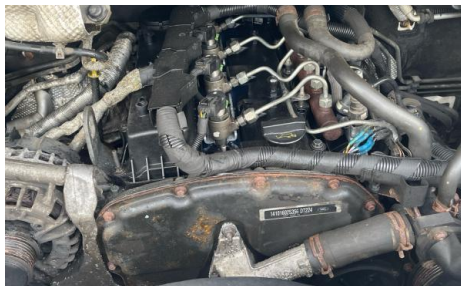
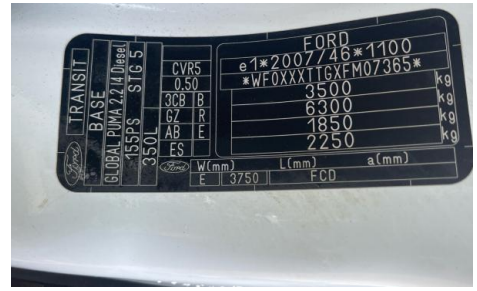
NSF
NSR
OSF
OSR
Spare

## Features

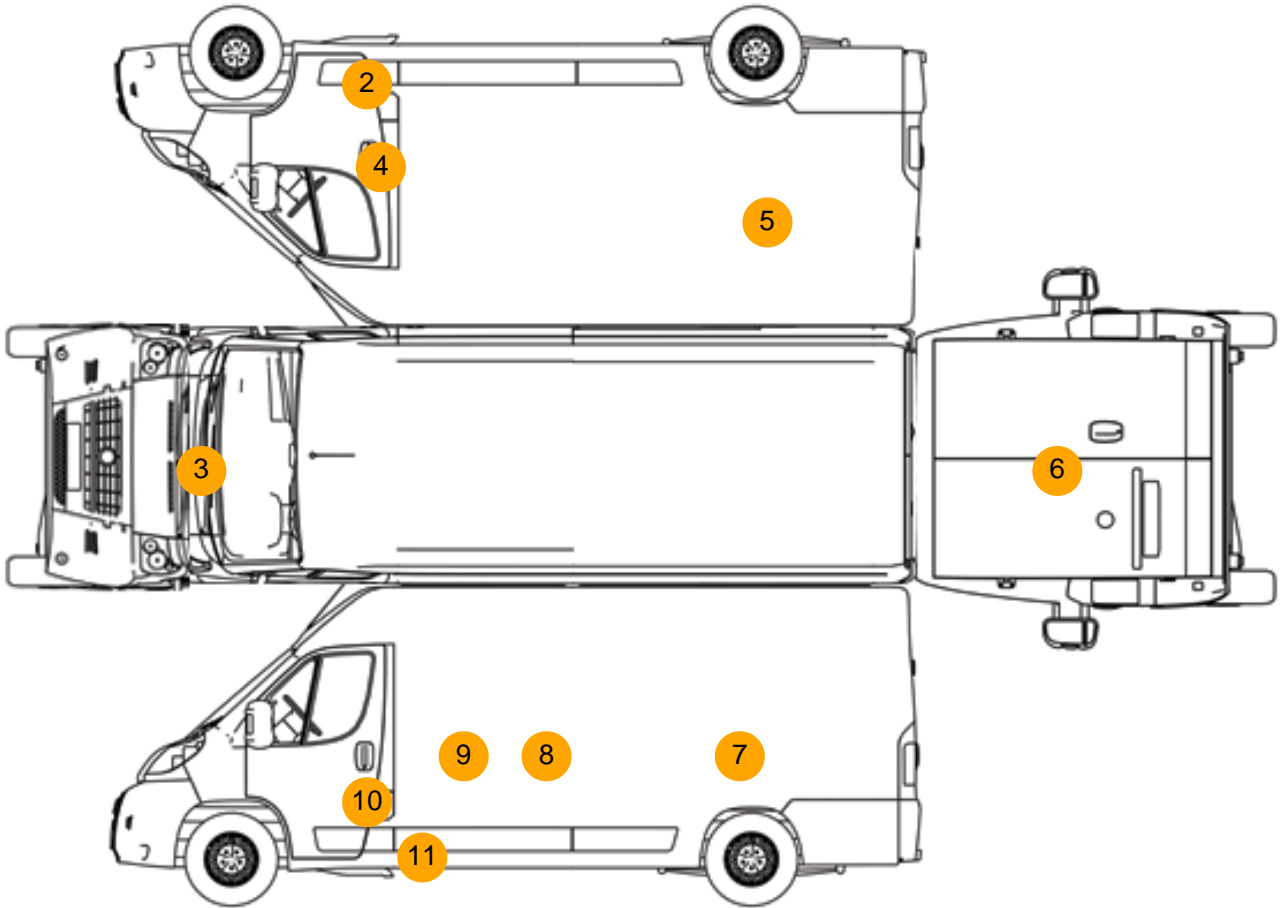
- Rear parking sensor
- Radio/CD
- Front electric windows
- Central locking

## Photos





## Condition Check



## Damage Photos



1: Seat Base Cover of  
Torn  
Over 3mm



2: Sill os  
Rusted  
Over 5mm



3: Bonnet  
Rusted  
Over 5mm

4: Door osf  
Dented  
With Paint Damage



5: Qtr Panel osr  
Dented  
2 Or Less Up To 10mm

6: Tailgate  
Dented  
With Paint Damage



7: Qtr Panel nsr  
Dented  
With Paint Damage

8: Door nsr  
Poor Previous Repair  
Poor Paint



9: Handle Outer nsr  
Broken  
Replace

10: Door nsf  
Dented  
With Paint Damage



11: Door Moulding nsf  
Missing  
Replace

**Interior**

<b>Carpet Condition</b>	Average		<b>Upholstery Condition</b>	Average
<b>Seat Condition</b>	Average		<b>Odour</b>	No
Engine Runs		Fault	Gearbox 1st and Reverse Test	Fault
Brakes		Fault	Clutch Slip Test from Static	Fault
Turbo Boosting		Fault	Gearbox Static Gear Selection (engine running)	Fault
Parking Brake		Fault	No Excessive Smoking	Fault
EML light illuminated		Fault	Oil warning light illuminated	Fault
Airbag light illuminated		Fault	Service indicator light illuminated	Fault
ABS light illuminated		Fault		

Windows

OK

Radio

OK

Steering

Fault