

VEHICLE INSPECTION REPORT

KX15YMU

Mercedes-Benz Antos 1824

Inspection

Serious Damage? No

Vehicle

VAT Plus VAT

V5 Present

Details

Reg. date 25/03/2015

VIN WDB9630032L929248

Gearbox AUTOMATIC

Year 2015

Body Style Curtainside

Axle Combi 4x2

Mileage 283,776 Km Not Warranted

Service history Yes

Rear Suspension Steel

MOT Due 31/01/2026

Rear Doors Barn

Fuel Type Diesel

Cab Type DAY CAB

Tail Lift Tuckaway

Colour BLUE

WARNING LIGHT ON DASH SURROUND CAMERA SYSTEM

Tyres

NSF NSI1

NSI2

NSI3

NSI4

OSF OSI1

OSI2

OSI3

OSI4

Spare NSO1

NSO2

NSO3

NSO4

OSO1

OSO2

OSO3

OSO4

Features

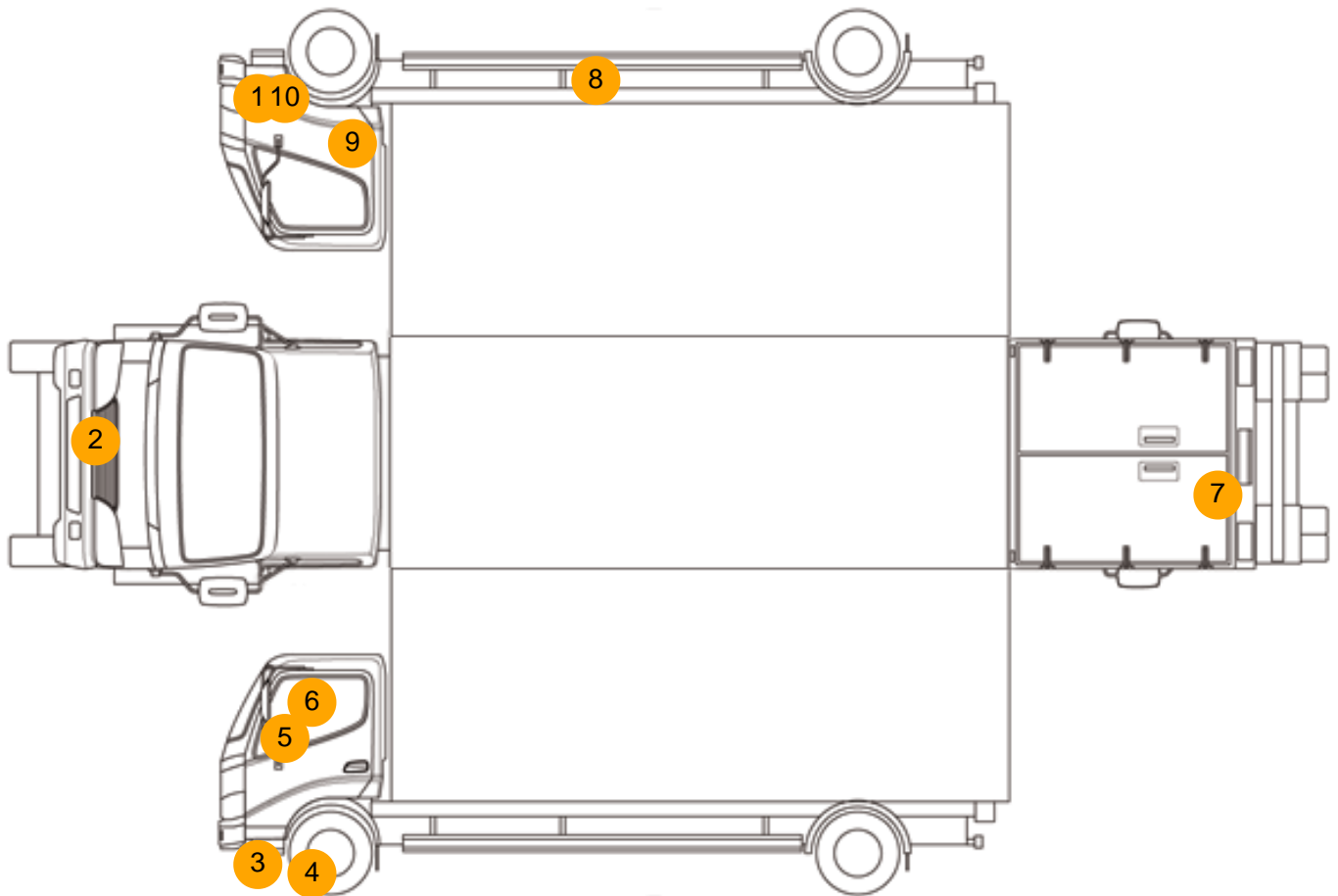
- Park assist camera

Photos





Condition Check



Damage Photos



1: Wing nsf
Scratched
Over 25mm Thru Paint



2: Bumper Front
Cracked
Over 25mm



3: Bumper Front
Cracked
Over 25mm



4: General Exterior
Soiled
Light



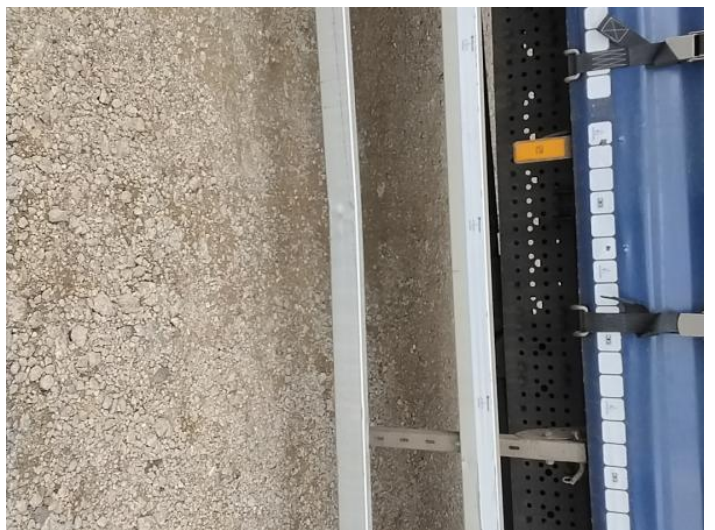
5: Door Mirror Assy nsf
Broken
Replace



6: Door Mirror Assy nsf
Missing
Replace



7: Door osr
Hole
Over 10mm



8: General Exterior
Soiled
Light



9: General Exterior
Soiled
Light

10: General Exterior
Soiled
Light



11: Seat Base Cover osf
Torn
Over 3mm

Interior

| Carpet Condition | | Upholstery Condition | |
|--------------------------|--------------------|--|--------------|
| Seat Condition | Average Average | Odour | Average - |
| Engine Runs | OK | Gearbox 1st and Reverse Test | OK |
| Brakes | OK | Clutch Slip Test from Static | OK |
| Parking Brake | OK | Gearbox Static Gear Selection (engine running) | OK |
| | | No Excessive Smoking | OK |
| EML light illuminated | OK | Oil warning light illuminated | OK |
| Airbag light illuminated | OK | DPF light illuminated | Fault |
| ABS light illuminated | OK | Service indicator light illuminated | OK |