

VEHICLE INSPECTION REPORT

PK16UHM

Daf CF 400

Inspection

Serious Damage? No

Vehicle

VAT Plus VAT

V5 Present

Details

Reg. date 24/05/2016

VIN XLRACM4100G087496

Axle Combi 8x2

Year 2016

Body Style Beavertail & Crane

Steering Combi Rear-Lift Steer

Mileage 295,868 Km Warranted

MOT Due 30/06/2025

Rear Suspension Air

Fuel Type Diesel

Cab Type DAY CAB

Colour WHITE

Gearbox AUTOMATIC

CHEESEWEDGE, PALFINGER PK33002.EH REMOTE CRANE (YEAR 2015, 4 EXT.), WINCH, WEIGH SYSTEM

Tyres

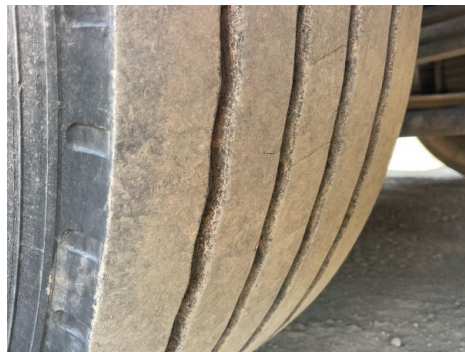
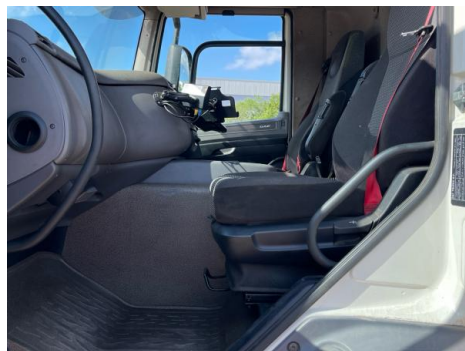
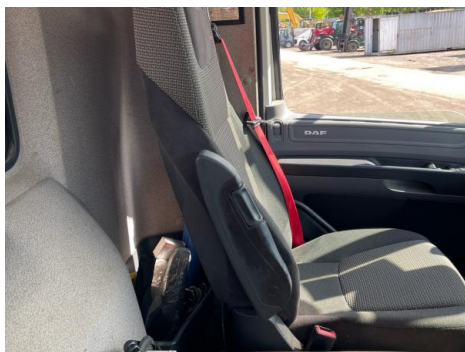
NSF	NSI1	NSI2	NSI3	NSI4
OSF	OSI1	OSI2	OSI3	OSI4
Spare	NSO1	NSO2	NSO3	NSO4
	OSO1	OSO2	OSO3	OSO4

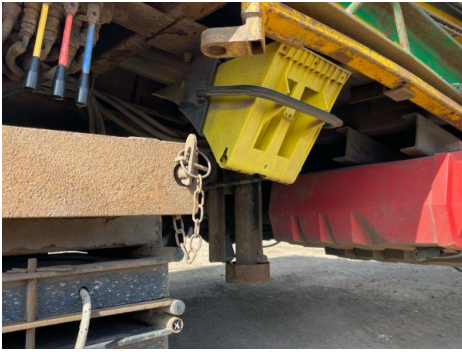
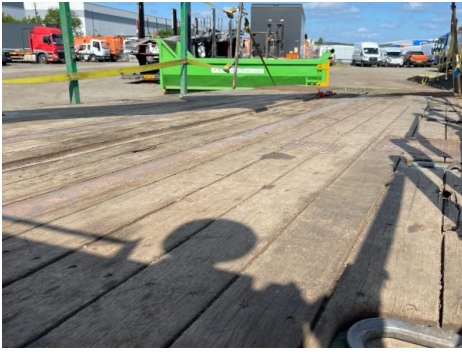
Features

- Cruise control
- Front electric windows
- Park assist camera
- Central locking
- Digital radio
- Cloth seat trim
- Air conditioning

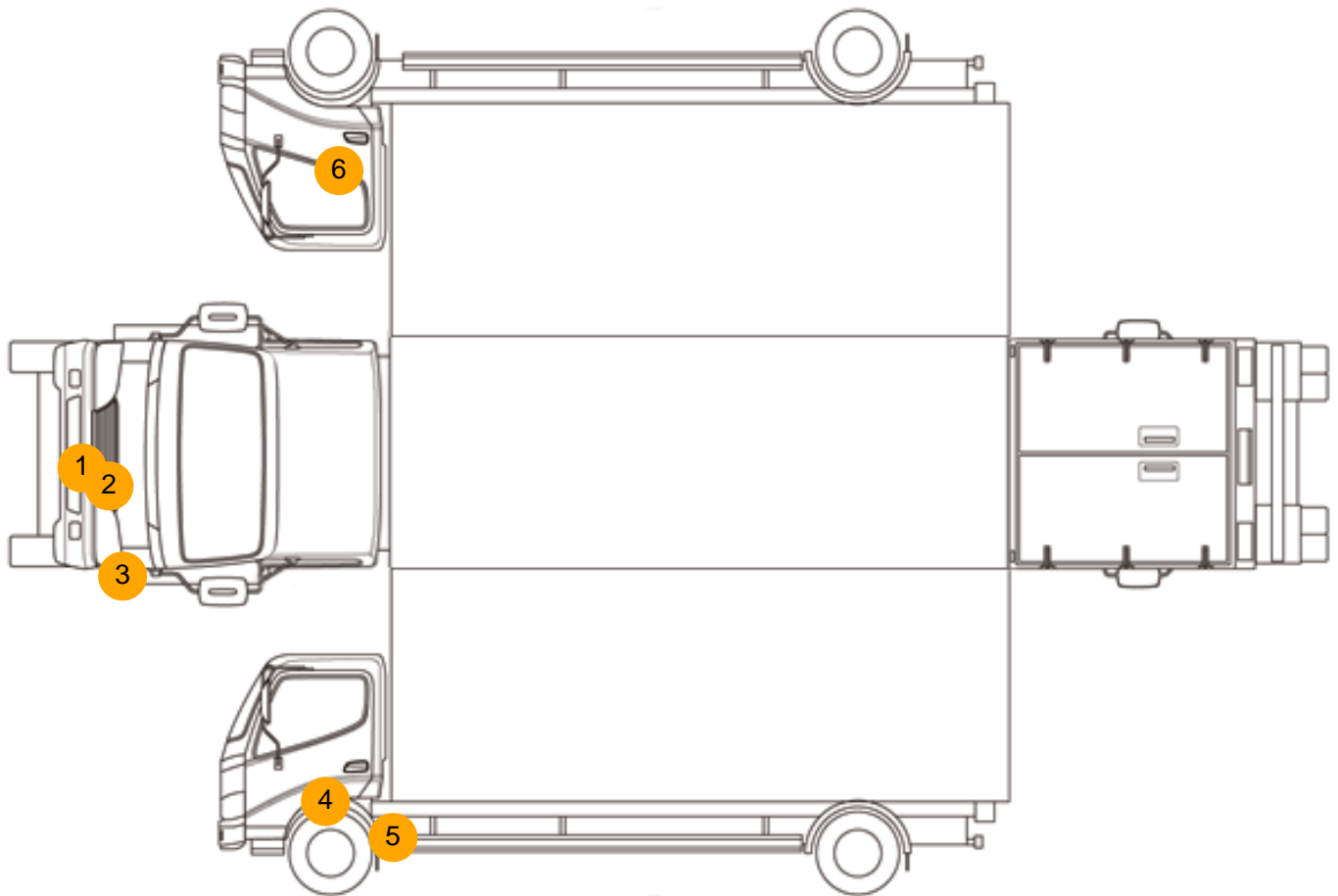
Photos







Condition Check



Damage Photos



1: Bumper Front
Dented
Over 30% Of Panel



2: Bumper Front Grill
Broken
Replace



3: Bumper Front
Scratched
25 to 100mm Thru Paint



4: Door nsf
Dented
Over 30mm



5: Wing nsf
Scratched
Over 25mm Thru Paint



6: Door osf
Dented
Over 30mm



7: Seat Base Cover osf
Torn
Over 3mm

Interior

Carpet Condition	OK	Upholstery Condition	OK
Seat Condition	Poor	Odour	-
Engine Runs	OK	No Excessive Smoking	OK
EML light illuminated	OK	DPF light illuminated	OK
ABS light illuminated	OK		