

VEHICLE INSPECTION REPORT

WN12BCY

Mercedes-Benz Sprinter 513 CDI

Inspection

Serious Damage? No

Vehicle

VAT Plus VAT

V5 Present

Details

Reg. date	30/03/2012	VIN	WDB9066532S669802	Cab Type	DAY CAB
Year	2012	Body Style	Access Platform	Gearbox	MANUAL
Mileage	267,346 Km Warranted	Service history	Yes	Axle Combi	4x2
Fuel Type	Diesel	Service documents	Electronic / Online	Rear Suspension	Steel
Colour	WHITE	MOT Due	30/06/2025		

VEHICLE OFF ROAD - MAY REQUIRE ATTN VERSALIFT EUROTEL 36LF

Tyres

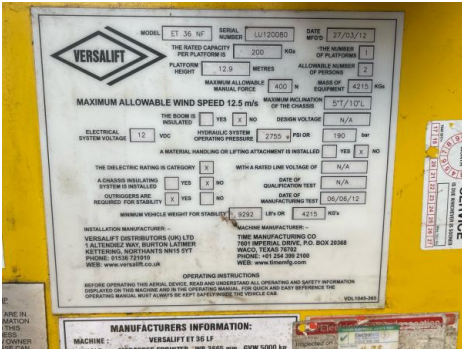
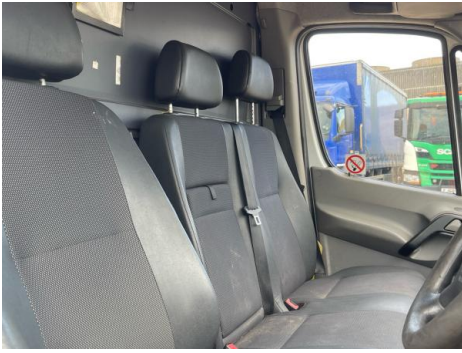
NSF	NSI1	NSI2	NSI3	NSI4
OSF	OSI1	OSI2	OSI3	OSI4
Spare	NSO1	NSO2	NSO3	NSO4
	OSO1	OSO2	OSO3	OSO4

Features

- Park assist camera

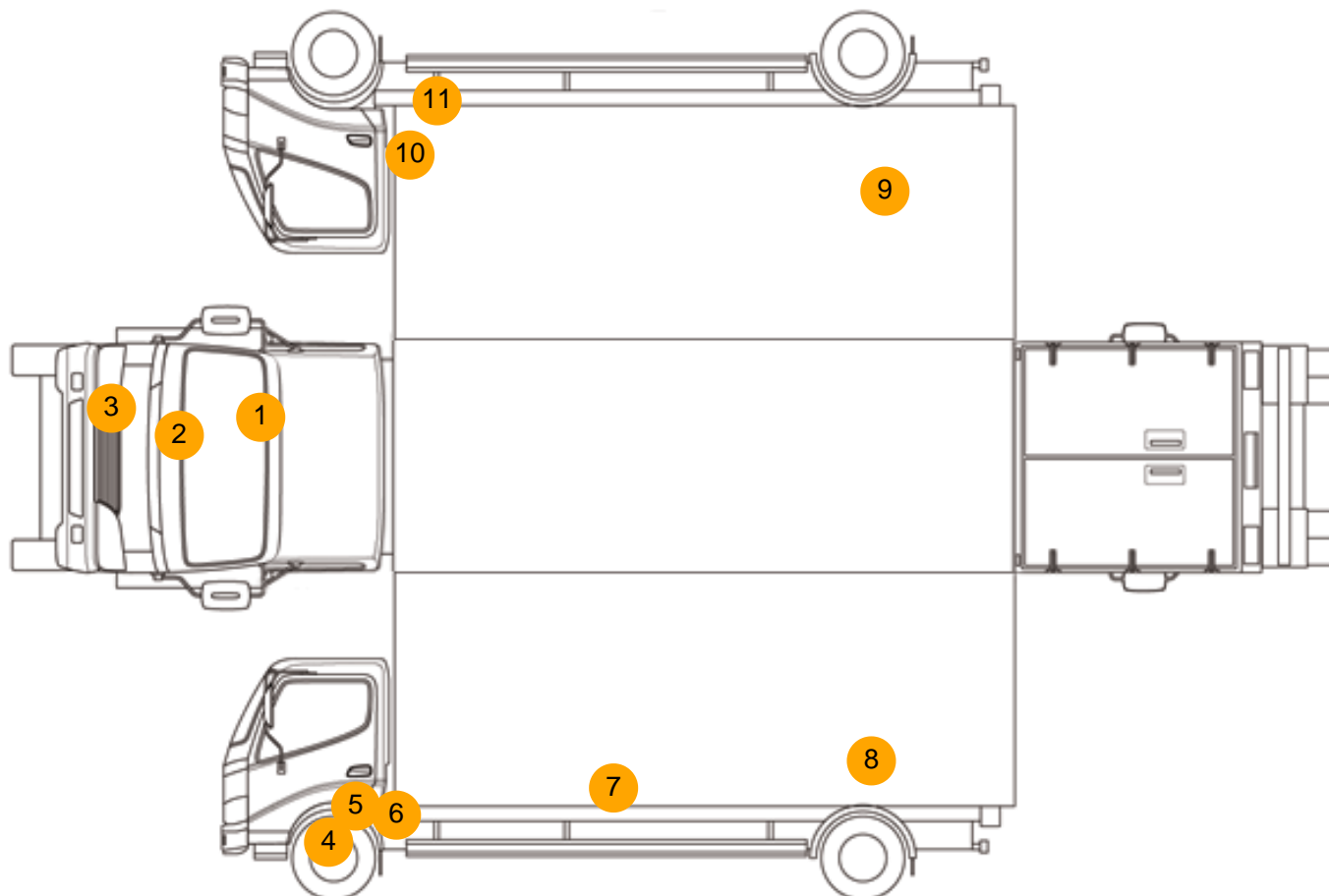
Photos







Condition Check



Damage Photos



1: Screen Front
Chipped
UpTo 10mm



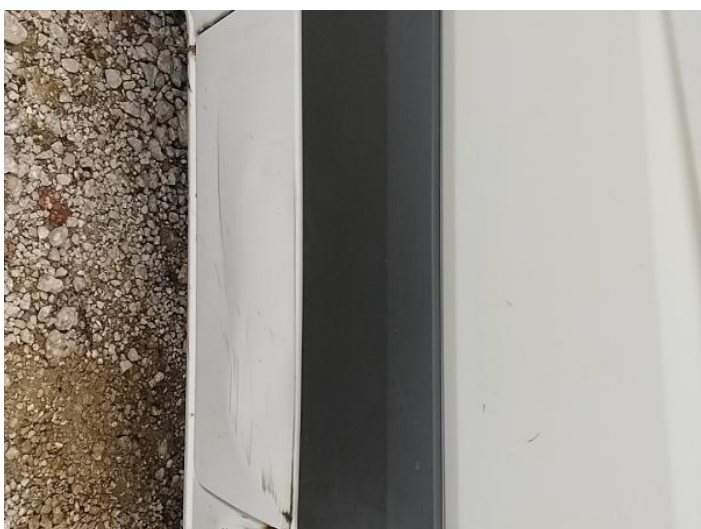
2: Bonnet
Dented
With Paint Damage



3: Front TowEye Cvr
Missing
Replace



4: Wing nsf
Dented
Over 30mm



5: Door nsf
Dented
With Paint Damage



6: B Post ns
Dented
With Paint Damage



7: Door nsr
Dented
With Paint Damage



8: Qtr Panel nsr
Rusted
Over 5mm



9: Qtr Panel osr
Rusted
Over 5mm



10: B Post os
Rusted
Over 5mm



11: Sill os
Rusted
Over 5mm



12: Carpets Front
Holed
Over 3mm



13: General Interior
Soiled
Light

Interior

Carpet Condition		Average	Upholstery Condition		Average
Seat Condition		Average	Odour		-
Engine Runs	OK		Gearbox 1st and Reverse Test	OK	
Brakes	OK		Clutch Slip Test from Static	OK	
Parking Brake	OK		Gearbox Static Gear Selection (engine running)	OK	
			No Excessive Smoking	OK	
EML light illuminated	OK		Oil warning light illuminated	OK	
Airbag light illuminated	OK		DPF light illuminated	OK	
ABS light illuminated	OK		Service indicator light illuminated	OK	