



COMMERCIAL VEHICLE AUCTIONS LTD
THE UK'S MOST ESTABLISHED COMMERCIAL VEHICLE AUCTIONEERS

Carr Hill Industrial Estate
 Doncaster
 DN4 8DE

01302 732600 | cva.noreply@cva-auctions.co.uk

VEHICLE INSPECTION REPORT

12CN2602

VOLVO FM 380

Inspection

Vehicle

VAT	Plus VAT
V5	Buyer To Apply

Details

Reg. date	04/05/2012	GVW	26000kg	Cab Type	DAY CAB
Year	2012	Colour	WHITE	Gearbox	AUTOMATIC
Mileage	865,886 Km Not Warranted	VIN	YV2JG00C1CB619344	Axle Combi	6x2
Fuel Type	DIESEL	Body Style	Skiploader	Rear Suspension	Steel

*MAJOR ENGINE NOISE**WARNING LIGHTS ON DASH, PASSENGER DOOR INOP*

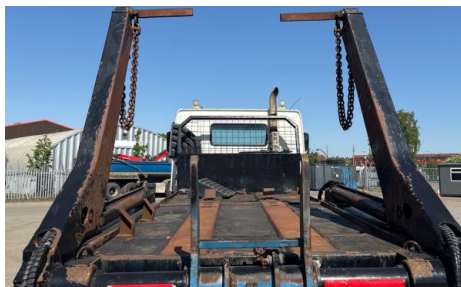
Tyres

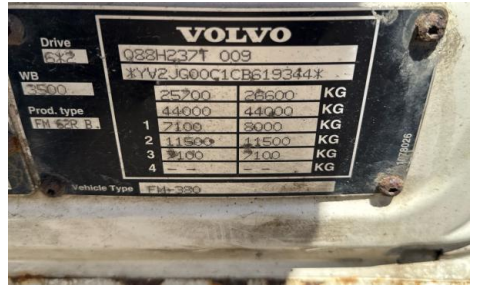
NSF
NSR
OSF
OSR
Spare

Features

- Air conditioning

Photos





VOLVO		
Drive	088H2371 009	
WB	3YV2JG00C1CB6193447	
3500	25200	28600 KG
Prod. type	44000	44000 KG
FM 52R B	2100	8000 KG
	1	11500
	2	11500 KG
	3	2100
	4	2100 KG
Vehicle Type	FM 330	

