



COMMERCIAL VEHICLE AUCTIONS LTD
THE UK'S MOST ESTABLISHED COMMERCIAL VEHICLE AUCTIONEERS

Carr Hill Industrial Estate
Doncaster
DN4 8DE

01302 732600 | cva.noreply@cva-auctions.co.uk

VEHICLE INSPECTION REPORT

HG19MFA

Volkswagen Crafter CR35 2.0 TDI 140PS

Inspection		Vehicle	
Serious Damage?	No	VAT	Plus VAT
		V5	To Follow

Details					
Reg. date	30/04/2019	Colour	WHITE	CAP Average	£8,525.00
Year	2019	VIN	WV1ZZZSYZK9051358	CAP Below	£6,625.00
Mileage	Not Showing	Body Style	Panel Van MWB	Gearbox	MANUAL
Fuel Type	Diesel	MOT Due	Expired	Gears	6
GVW	3500kg	CAP Clean	£9,900.00		

COLLECTED AS NON-RUNNER, STARTS AND DRIVES, MOT HISTORY SHOWS 90,893 MILES ON 5/3/23
SIDE LOAD DOOR, E/MIRRORS, AD-BLUE.

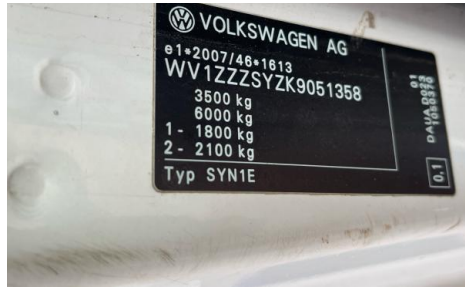
Tyres	
NSF	
NSR	
OSF	
OSR	
Spare	

Features

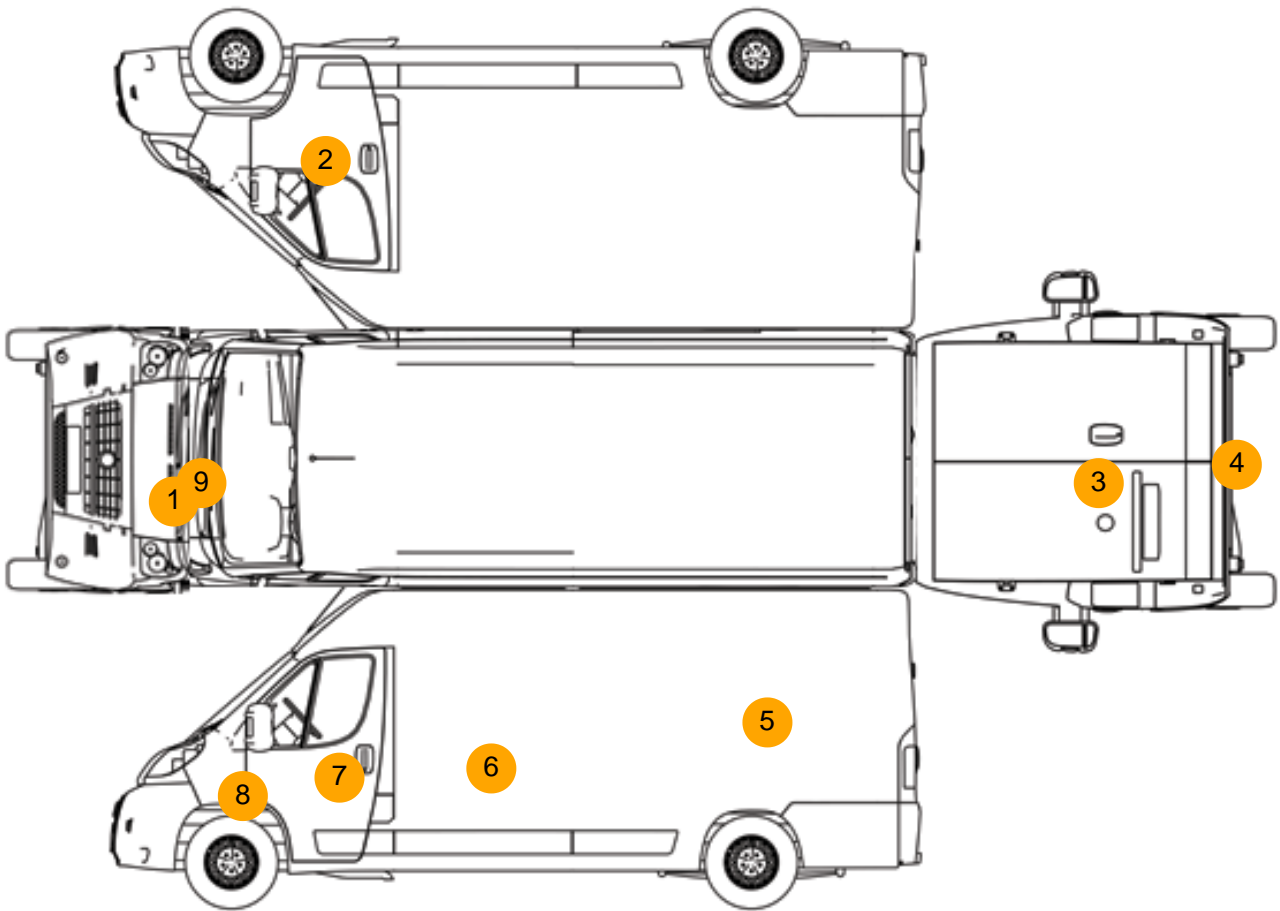
- Radio/CD
- Front electric windows
- Central locking

Photos





Condition Check



Damage Photos



1: Bonnet
Dented
Over 30mm

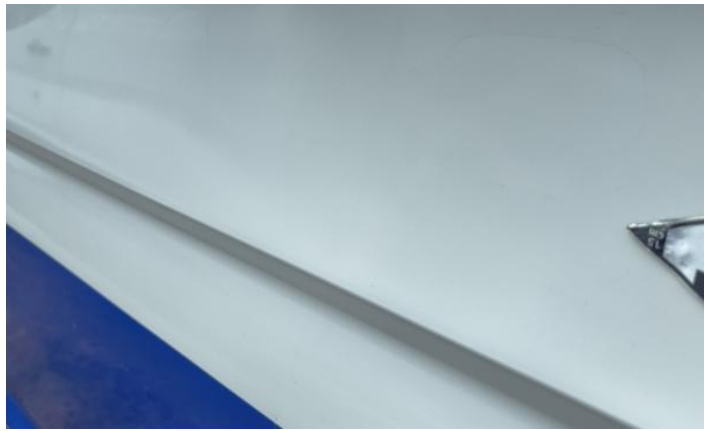


2: Door osf
Dented
Over 30mm



3: Tailgate
Dented
Over 30mm

4: Bumper Rear Moulding
Missing
Replace



5: Qtr Panel nsr
Dented
With Paint Damage

6: Door nsr
Dented
With Paint Damage



7: Door nsf
Dented
With Paint Damage

8: Wing nsf
Dented
Over 30mm



9: Other
N/A
N/A

Interior

Carpet Condition	Average		Upholstery Condition	Average
Seat Condition	Average		Odour	No
Engine Runs		Fault	Gearbox 1st and Reverse Test	Fault
Brakes		Fault	Clutch Slip Test from Static	Fault
Turbo Boosting		Fault	Gearbox Static Gear Selection (engine running)	Fault
Parking Brake		Fault	No Excessive Smoking	Fault
EML light illuminated		Fault	Oil warning light illuminated	Fault
Airbag light illuminated		Fault	DPF light illuminated	Fault
ABS light illuminated		Fault	Service indicator light illuminated	Fault
Windows		Fault	Radio	Fault
Sat nav		Fault	Steering	Fault