



**COMMERCIAL VEHICLE AUCTIONS LTD**  
THE UK'S MOST ESTABLISHED COMMERCIAL VEHICLE AUCTIONEERS

Carr Hill Industrial Estate  
Doncaster  
DN4 8DE

01302 732600 | cva.noreply@cva-auctions.co.uk

# VEHICLE INSPECTION REPORT

**LO18HLY**

## Toyota Hilux Icon 2.4 D-4D

Inspection		Vehicle	
Serious Damage?	No	VAT	Plus VAT
		V5	To Follow

Details					
Reg. date	27/07/2018	Colour	WHITE	CAP Average	£6,725.00
Year	2018	VIN	AHTHB3CDX02126709	CAP Below	£5,100.00
Mileage	161,494 Miles Warranted	Body Style	Pickup Double Cab	Gearbox	MANUAL
Fuel Type	Diesel	MOT Due	25/06/2026	Gears	6
GVW	3210kg	CAP Clean	£7,925.00	Axle Combi	4x4

TOW BAR, E/MIRRORS, AD-BLUE

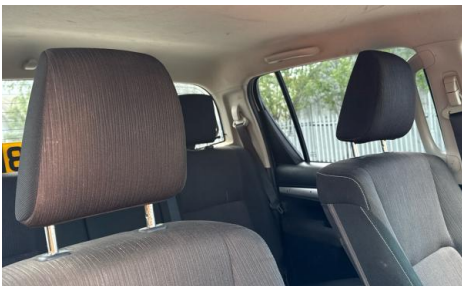
Tyres
NSF
NSR
OSF
OSR
Spare

## Features

- Bluetooth connection
- Auxiliary input socket
- Rear electric windows
- Cloth seat trim
- Cruise control
- Digital radio
- Drivers airbag
- Navigation system
- Air conditioning
- Passenger airbag
- Park assist camera
- Front electric windows
- Central locking

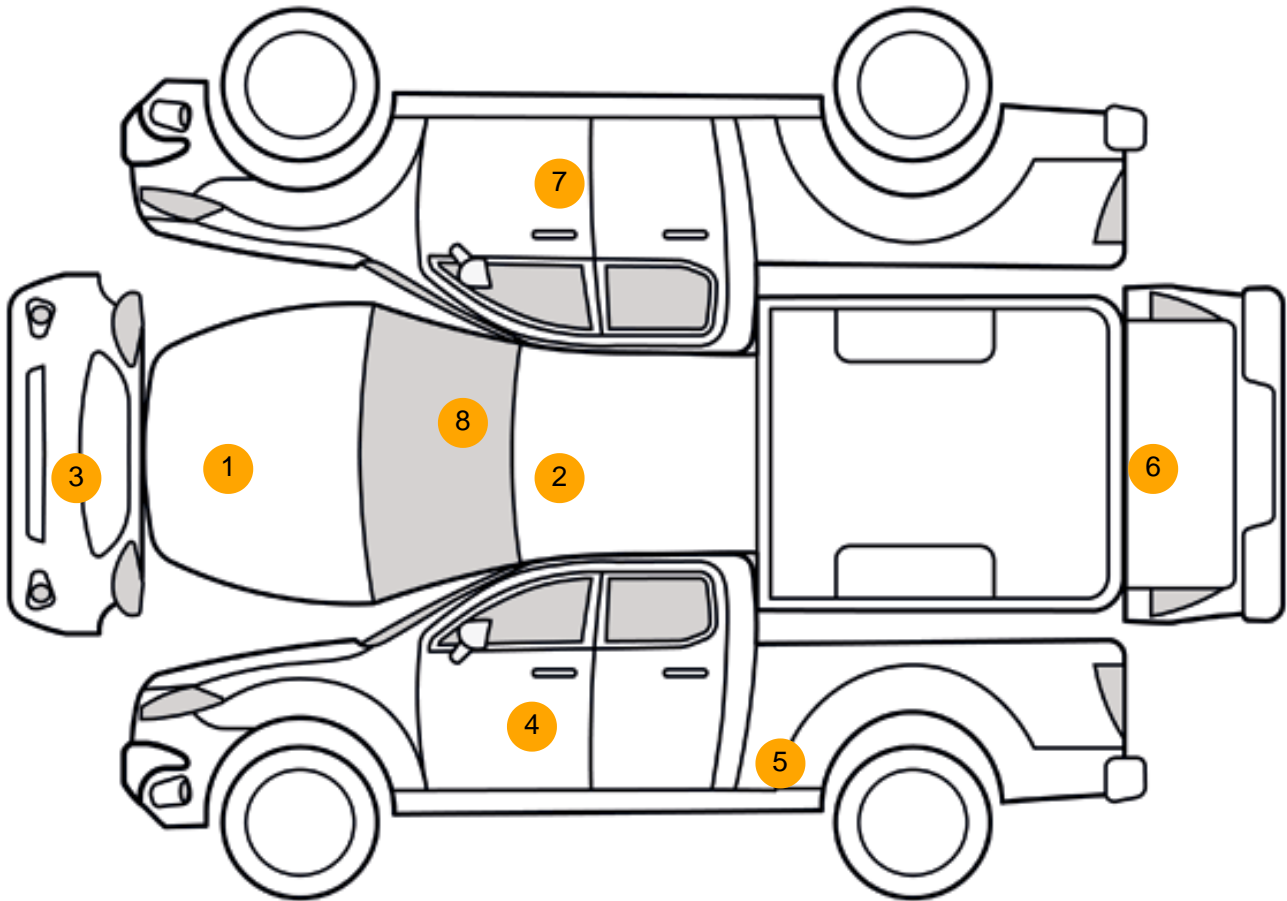
## Photos







## Condition Check



## Damage Photos



1: Bonnet  
Chipped  
Multiple Chips



2: Roof  
Chipped  
Multiple Chips



3: Bumper Front  
Cracked  
Over 25mm

4: Door nsf  
Dented  
Over 30mm



5: Qtr Panel nsr  
Dented  
Over 30mm

6: Tailgate  
Dented  
With Paint Damage



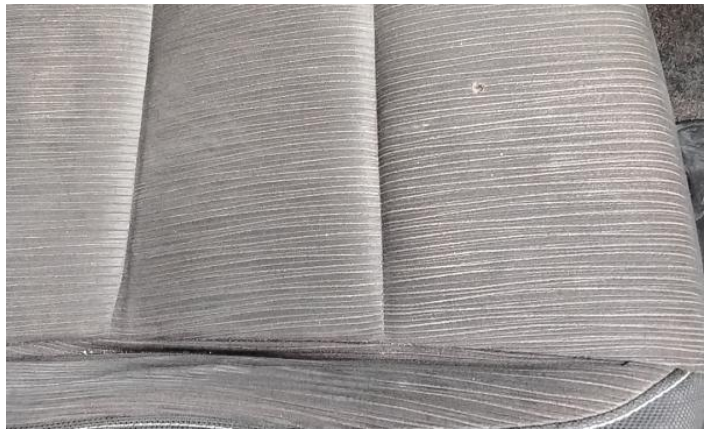
7: Door osf  
Dented  
Over 30mm

8: Screen Front  
Chipped  
Over 10mm



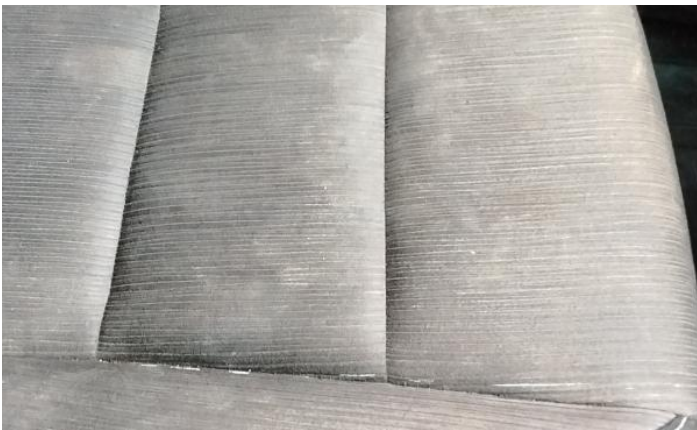
9: Seat Back Cover osr  
Soiled  
Heavy

10: Seat Back Cover osr  
Soiled  
Heavy



11: Door Pad osf  
Soiled  
Heavy

12: Seat Base Cover osf  
Holed  
Over 3mm



13: Seat Base Cover nsf  
Soiled  
Heavy

14: Door Pad nsf  
Soiled  
Heavy

## Interior

<b>Carpet Condition</b>	OK	<b>Upholstery Condition</b>	Poor
<b>Seat Condition</b>	Poor	<b>Odour</b>	No
Engine Runs	OK	No Excessive Smoking	OK
EML light illuminated	OK	DPF light illuminated	OK
ABS light illuminated	OK		