



COMMERCIAL VEHICLE AUCTIONS LTD
THE UK'S MOST ESTABLISHED COMMERCIAL VEHICLE AUCTIONEERS

Carr Hill Industrial Estate
Doncaster
DN4 8DE

01302 732600 | cva.noreply@cva-auctions.co.uk

VEHICLE INSPECTION REPORT

C369493

DON-BUR CURTAINSIDE

Inspection

Vehicle

VAT	Plus VAT
V5	N/A

Details

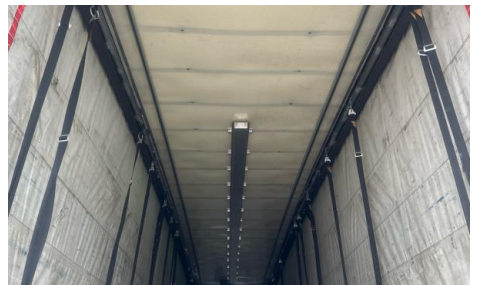
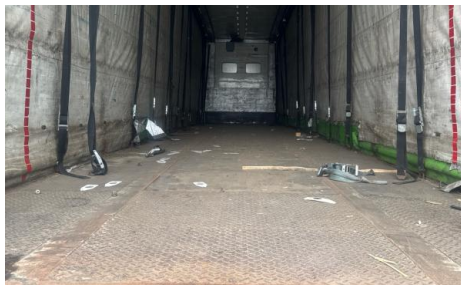
Reg. date	01/01/2014	Colour	GREEN	Axle Combi	Tri
Year	2014	VIN	SEPPM39CAEL062289	Rear Suspension	Air
Mileage	Not Showing	Body Style	Trailer	Rear Doors	Barn
Fuel Type		Brakes	Drum		

BPW AXLES, RAISE & LOWER VALVE

Tyres

NSF
NSR
OSF
OSR
Spare

Photos





DON-BUR		MANUFACTURER: DON-BUR (Bodies & Trailers) Ltd.	
APPROVAL NUMBER: e11*NKS*0839*00		CHASSIS NUMBER: SEPPM39CAEL062289	
TYPE: 385165 R 22.5	COUNTRY OF REGISTRATION: (GB)	MAX GROSS WEIGHT: 39000 kg	
YEAR: 2014		MAX KING PIN LOAD: 0 - 15000 kg	
WHEELBASE TORQUE: 830 mm		MAX AXLE LOAD: 1 - 8000 kg	
LENGTH: 13500 mm		MAX AXLE LOAD: 2 - 8000 kg	
WIDTH: 2550 mm		MAX AXLE LOAD: 3 - 8000 kg	
Clearance Centre to Trailer Rear: 12000 mm		MAX AXLE DROP LOAD: T. 24000 kg	



