

# VEHICLE INSPECTION REPORT

**DK18HXJ**

## Daf LF 180

### Inspection

Serious Damage? No

### Vehicle

VAT Plus VAT

V5 Missing

### Details

Reg. date 05/03/2018

VIN XLRAEL1500L472856

Axle Combi 4x2

Year 2018

Body Style Box Van

Steering Combi Steer

Mileage 549,644 Km Warranted

Keys 2

Rear Suspension Steel

Fuel Type Diesel

Cab Type SLEEPER CAB

Rear Doors Barn

Colour WHITE

Gearbox Automatic

### Tyres

NSF NSI1

NSI2

NSI3

NSI4

OSF OSI1

OSI2

OSI3

OSI4

Spare NSO1

NSO2

NSO3

NSO4

OSO1

OSO2

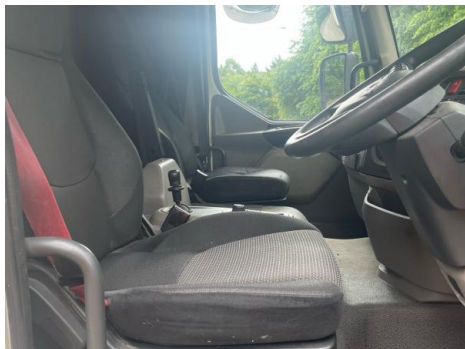
OSO3

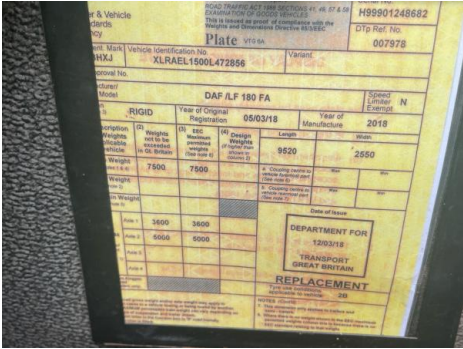
OSO4

## Features

- Bluetooth connection
- Drivers airbag
- Cruise control
- Cloth seat trim
- Radio/CD
- Air conditioning

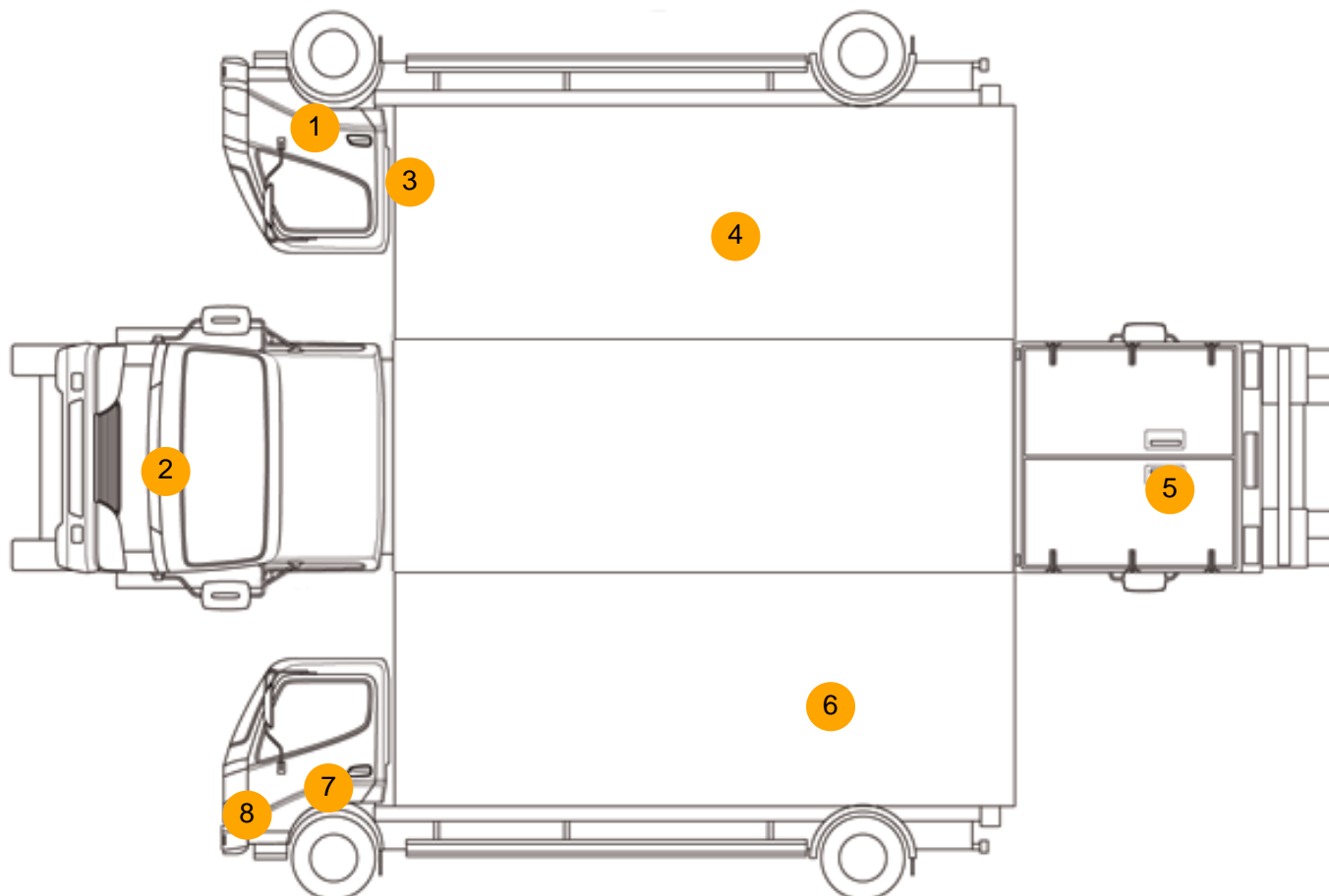
## Photos







## Condition Check



## Damage Photos



1: Door Moulding of  
Broken  
Replace



2: Bonnet  
Chipped  
Multiple Chips



3: Door osf  
Dented  
Between 10mm + 30mm



4: Qtr Panel osr  
Scratched  
Over 25mm Thru Paint



5: Tailgate  
Rusted  
Over 5mm



6: Qtr Panel nsr  
Hole  
Over 10mm



7: Door nsf  
Chipped  
Edge Chip



8: Wing nsf  
Scratched  
Over 25mm Thru Paint

## Interior

Carpet Condition		Upholstery Condition	
Seat Condition	Average Average	Odour	Average -
Engine Runs	OK	Gearbox 1st and Reverse Test	OK
Brakes	OK	Clutch Slip Test from Static	OK
Turbo Boosting	OK	Gearbox Static Gear Selection (engine running)	OK
Parking Brake	OK	No Excessive Smoking	OK
EML light illuminated	Fault	Oil warning light illuminated	OK
Airbag light illuminated	OK	DPF light illuminated	OK
ABS light illuminated	OK	Service indicator light illuminated	OK
Windows	OK	Radio	OK
		Steering	OK