



COMMERCIAL VEHICLE AUCTIONS LTD
THE UK'S MOST ESTABLISHED COMMERCIAL VEHICLE AUCTIONEERS

Carr Hill Industrial Estate
Doncaster
DN4 8DE

01302 732600 | cva.noreply@cva-auctions.co.uk

VEHICLE INSPECTION REPORT

PO13EHH

Daf LF 55.220

Inspection

Serious Damage? No

Vehicle

VAT Plus VAT

V5 Present

Details

Reg. date	12/04/2013	Colour	RED	Gearbox	AUTOMATIC
Year	2013	VIN	XLRAE55GF0L423379	Axle Combi	4x2
Mileage	800,270 Km Warranted	Body Style	Box Van	Rear Suspension	Steel
Fuel Type	Diesel	MOT Due	31/01/2027	Tail Lift	Cantilever
GVW	18000kg	Cab Type	DAY CAB		

COLLECTED AS NON-RUNNER-CAT/EXHAUST/TAIL LIFT FLAPS/BODY/FUEL TANK/DIFFERENTIAL REQUIRES REPAIR, WARNING LIGHT ON DASH

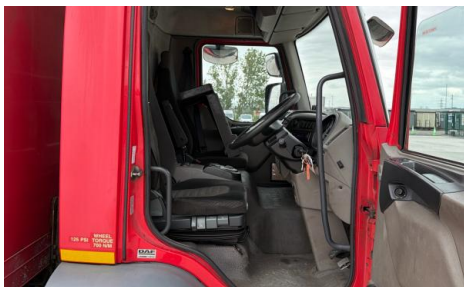
Tyres

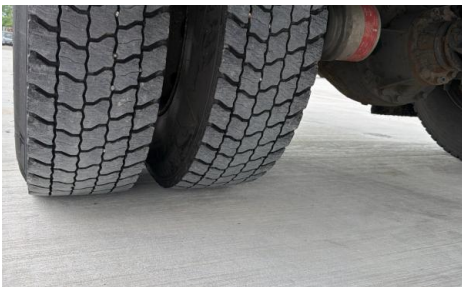
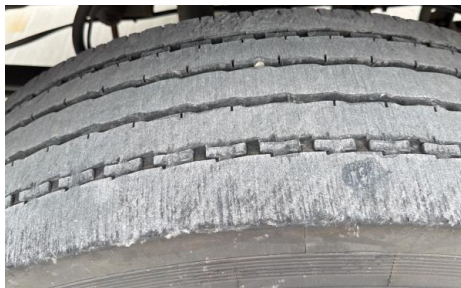
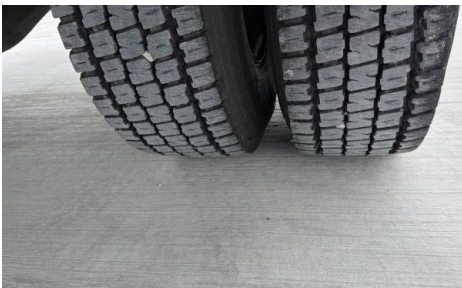
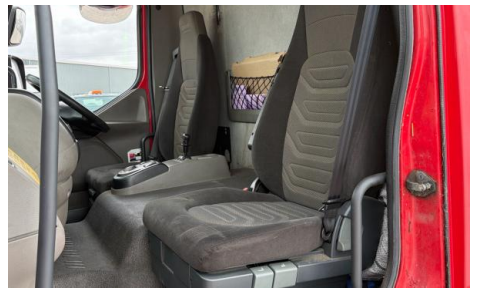
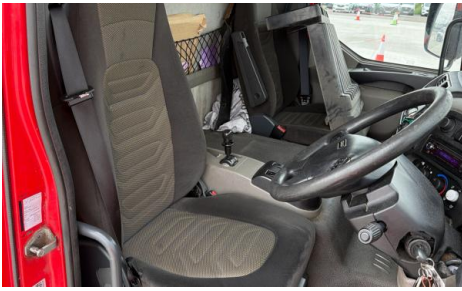
NSF	NSI1	NSI2	NSI3	NSI4
OSF	OSI1	OSI2	OSI3	OSI4
Spare	NSO1	NSO2	NSO3	NSO4
	OSO1	OSO2	OSO3	OSO4

Features

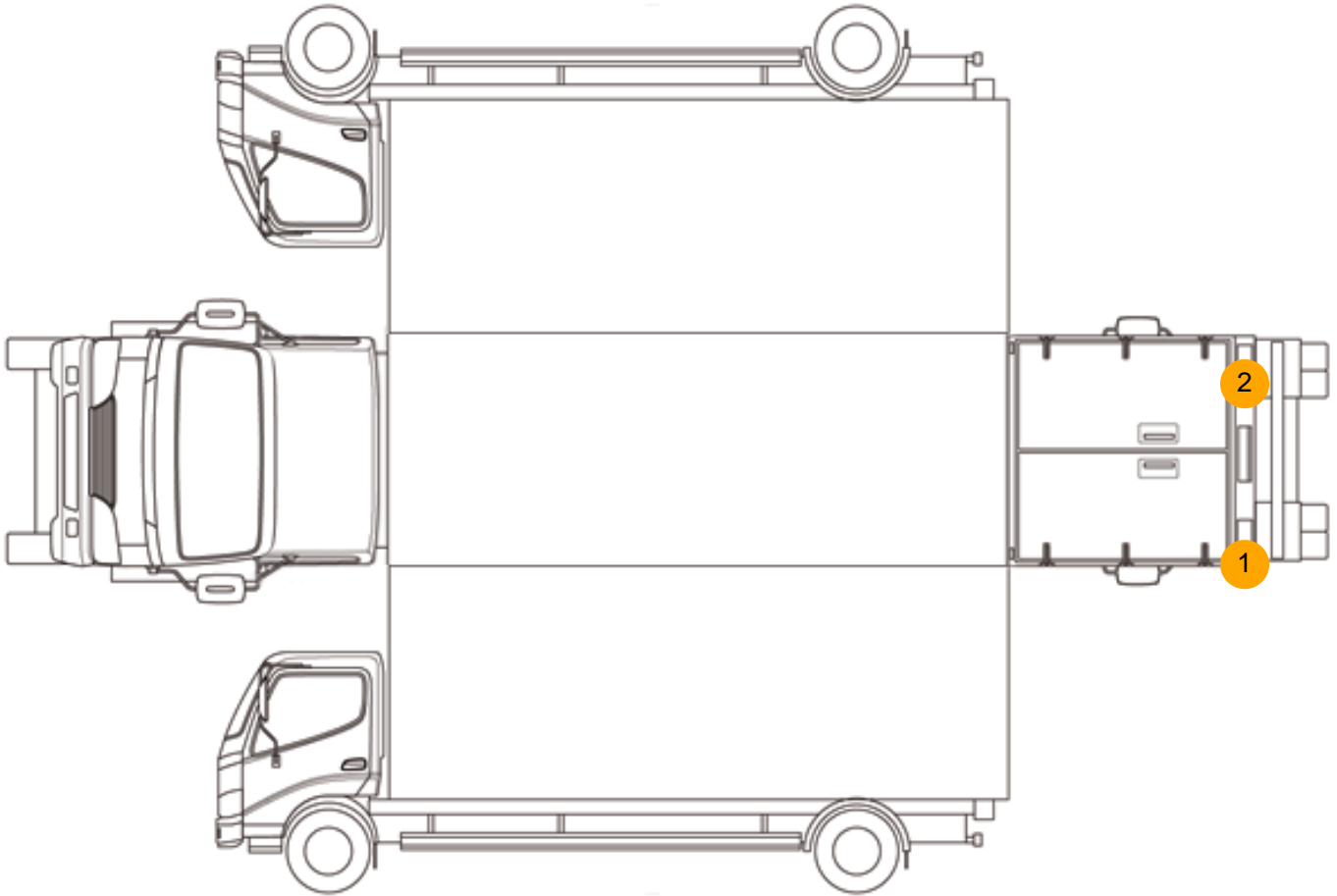
- Cruise control
- Radio/CD
- Front electric windows
- Central locking
- Cloth seat trim

Photos





Condition Check



Damage Photos



1: Panel Rear
Dented
Over 30mm

2: Panel Rear
Dented
Over 30mm

Interior

Carpet Condition -
Seat Condition -

Upholstery Condition -
Odour -

Engine Runs OK No Excessive Smoking OK

EML light illuminated

OK

DPF light illuminated

Fault

ABS light illuminated

OK