

VEHICLE INSPECTION REPORT

DX20TKT

Daf LF 180

Inspection

Serious Damage? No

Vehicle

VAT Plus VAT

V5 Present

Details

Reg. date 29/06/2020

VIN XLRAEL1500L497807

Gearbox MANUAL

Year 2020

Body Style Curtainside

Axle Combi 4x2

Mileage 228,260 Km Not Warranted

Service history Yes

Rear Suspension Steel

MOT Due 31/07/2025

Rear Doors Barn

Fuel Type Diesel

Cab Type DAY CAB

Tail Lift Tuckaway

Colour WHITE

PALLET TRUCK NOT SOLD WITH VEHICLE

Tyres

NSF NSI1

NSI2

NSI3

NSI4

OSF OSI1

OSI2

OSI3

OSI4

Spare NSO1

NSO2

NSO3

NSO4

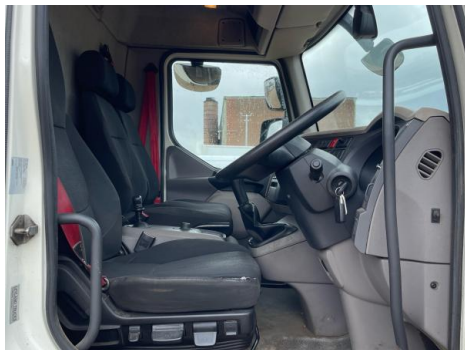
OSO1

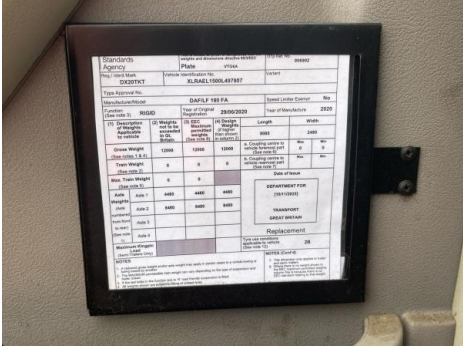
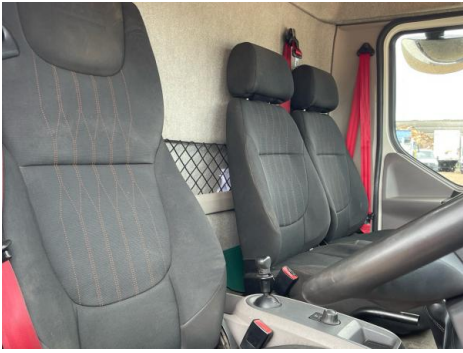
OSO2

OSO3

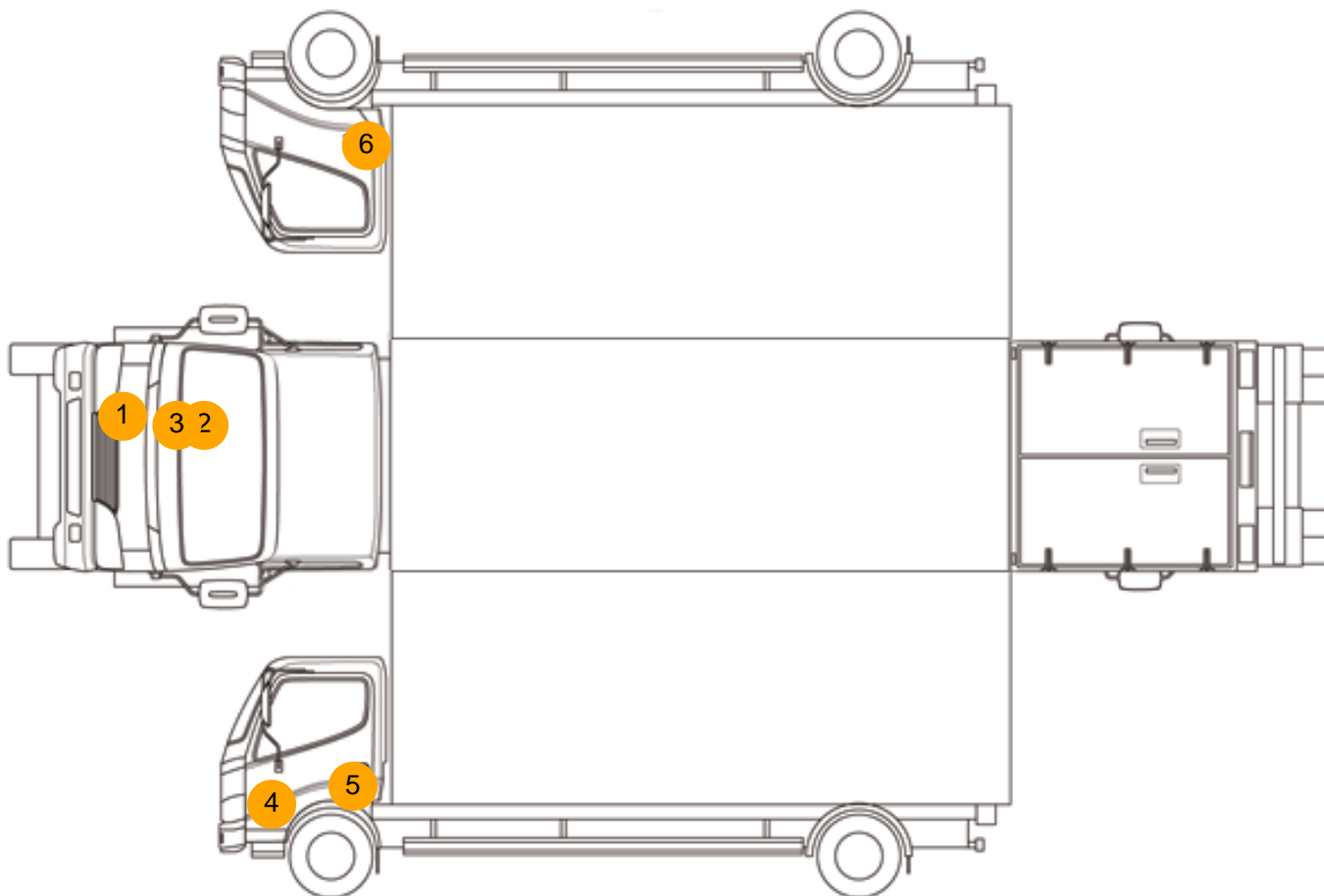
OSO4

Photos





Condition Check



Damage Photos



1: Bumper Front
Cracked
Over 25mm



2: Bonnet
Chipped
Multiple Chips



3: Bonnet
Cracked
Replace



4: Moulding nsf Wing
Scratched (Painted)
UpTo 25mm Not Thru Paint



5: Door nsf
Scratched
Over 25mm Not Thru Paint



6: Door osf
Scratched
Over 25mm Not Thru Paint



7: Seat Base Cover osf
Torn
Over 3mm

Interior

Carpet Condition		Average	Upholstery Condition		Average
Seat Condition		Average	Odour		-
Engine Runs	OK		Gearbox 1st and Reverse Test	OK	
Brakes	OK		Clutch Slip Test from Static	OK	
Parking Brake	OK		Gearbox Static Gear Selection (engine running)	OK	
			No Excessive Smoking	OK	
EML light illuminated	OK		Oil warning light illuminated	OK	
Airbag light illuminated	OK		DPF light illuminated	OK	
ABS light illuminated	OK		Service indicator light illuminated	OK	