



**COMMERCIAL VEHICLE AUCTIONS LTD**  
THE UK'S MOST ESTABLISHED COMMERCIAL VEHICLE AUCTIONEERS

Carr Hill Industrial Estate  
Doncaster  
DN4 8DE

01302 732600 | cva.noreply@cva-auctions.co.uk

# VEHICLE INSPECTION REPORT

**LN17EHS**

## Mitsubishi Fuso Canter 7C15 34

Inspection		Vehicle	
Serious Damage?	No	VAT	Plus VAT
		V5	Present

Details					
Reg. date	31/05/2017	Colour	WHITE	Gearbox	AUTOMATIC
Year	2017	VIN	TYAFEB71ERDZ02189	Axle Combi	4x2
Mileage	161,150 Km Warranted	Body Style	RECYCLING UNIT	Rear Suspension	Steel
Fuel Type	Diesel	MOT Due	30/06/2026		
GVW	7490kg	Cab Type	DAY CAB		

\*WARNING LIGHT ON DASH\*

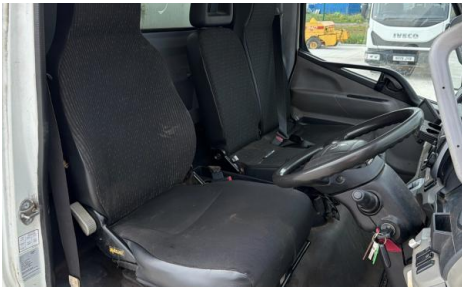
Tyres				
NSF	NSI1	NSI2	NSI3	NSI4
OSF	OSI1	OSI2	OSI3	OSI4
Spare	NSO1	NSO2	NSO3	NSO4
	OSO1	OSO2	OSO3	OSO4

## Features

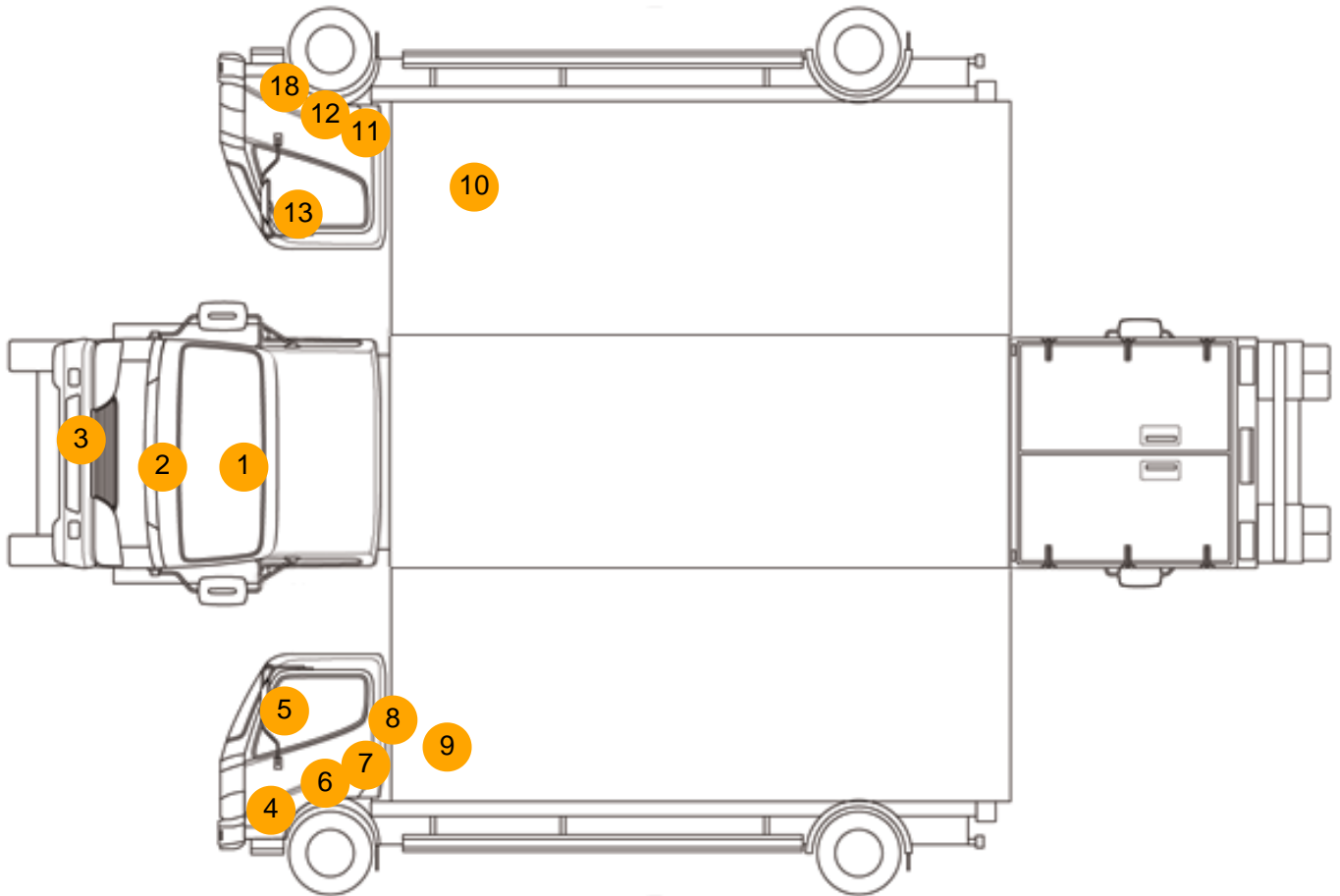
- Cruise control
- Radio/CD
- Air conditioning
- Drivers airbag
- Central locking
- Cloth seat trim

## Photos





## Condition Check



## Damage Photos



1: Screen Front  
Chipped  
Over 10mm

2: Bonnet  
Chipped  
Multiple Chips



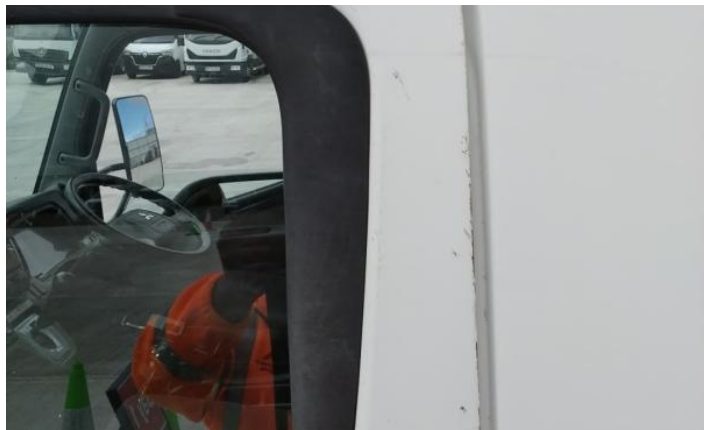
3: Bumper Front  
Rusted  
Over 5mm

4: Bumper Front  
Scratched  
Over 100mm Thru Paint



5: Door Mirror Assy nsf  
Scratched (Painted)  
Over 25mm Thru Paint

6: Door nsf  
Dented  
With Paint Damage



7: Door nsf  
Scratched  
Over 25mm Thru Paint

8: Door nsf  
Scratched  
Over 25mm Thru Paint



9: Qtr Panel nsr  
Scratched  
Over 25mm Thru Paint

10: Qtr Panel osr  
Scratched  
Over 25mm Thru Paint



11: Door osf  
Scratched  
Over 25mm Thru Paint

12: Door osf  
Scratched  
Over 25mm Thru Paint



13: Door Mirror Assy osf  
Scratched (Painted)  
Over 25mm Thru Paint

14: Carpets Front  
Holed  
Over 3mm



15: Door Pad osf  
Broken  
Replace

16: General Interior  
Soiled  
Light



17: Dash Warning Lights  
Displayed  
No Action

18: Door osf  
Dented  
Hail - Severe

**Interior**

Carpet Condition	Average	Upholstery Condition	Average
Seat Condition	Average	Odour	-
Engine Runs	OK	No Excessive Smoking	OK
EML light illuminated	Fault	DPF light illuminated	OK
ABS light illuminated	OK		