



COMMERCIAL VEHICLE AUCTIONS LTD
THE UK'S MOST ESTABLISHED COMMERCIAL VEHICLE AUCTIONEERS

Carr Hill Industrial Estate
Doncaster
DN4 8DE

01302 732600 | cva.noreply@cva-auctions.co.uk

VEHICLE INSPECTION REPORT

DY18BFJ

Renault Master LM35 2.3 DCI 145PS

Inspection

Serious Damage? No

Vehicle

VAT Plus VAT

V5 Present

Details

Reg. date	30/04/2018	Colour	WHITE	CAP Clean	£6,075.00
Year	2018	VIN	VF1MA000459926322	CAP Average	£5,125.00
Mileage	38,418 Miles Warranted	Body Style	Panel Van LWB	CAP Below	£3,900.00
Fuel Type	Diesel	Service history	Yes	Gearbox	MANUAL
GVW	3500kg	MOT Due	31/03/2027	Gears	6

SIDE LOADING DOOR, E/MIRRORS, DAVELL B32878-1 JETTING UNIT

Tyres

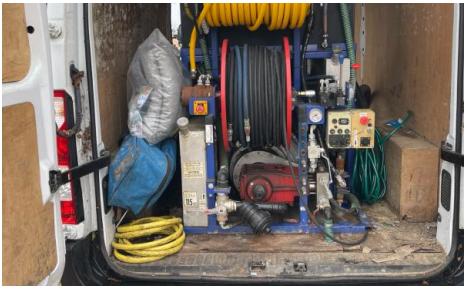
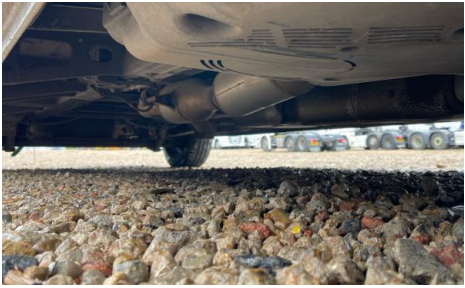
NSF
NSR
OSF
OSR
Spare

Features

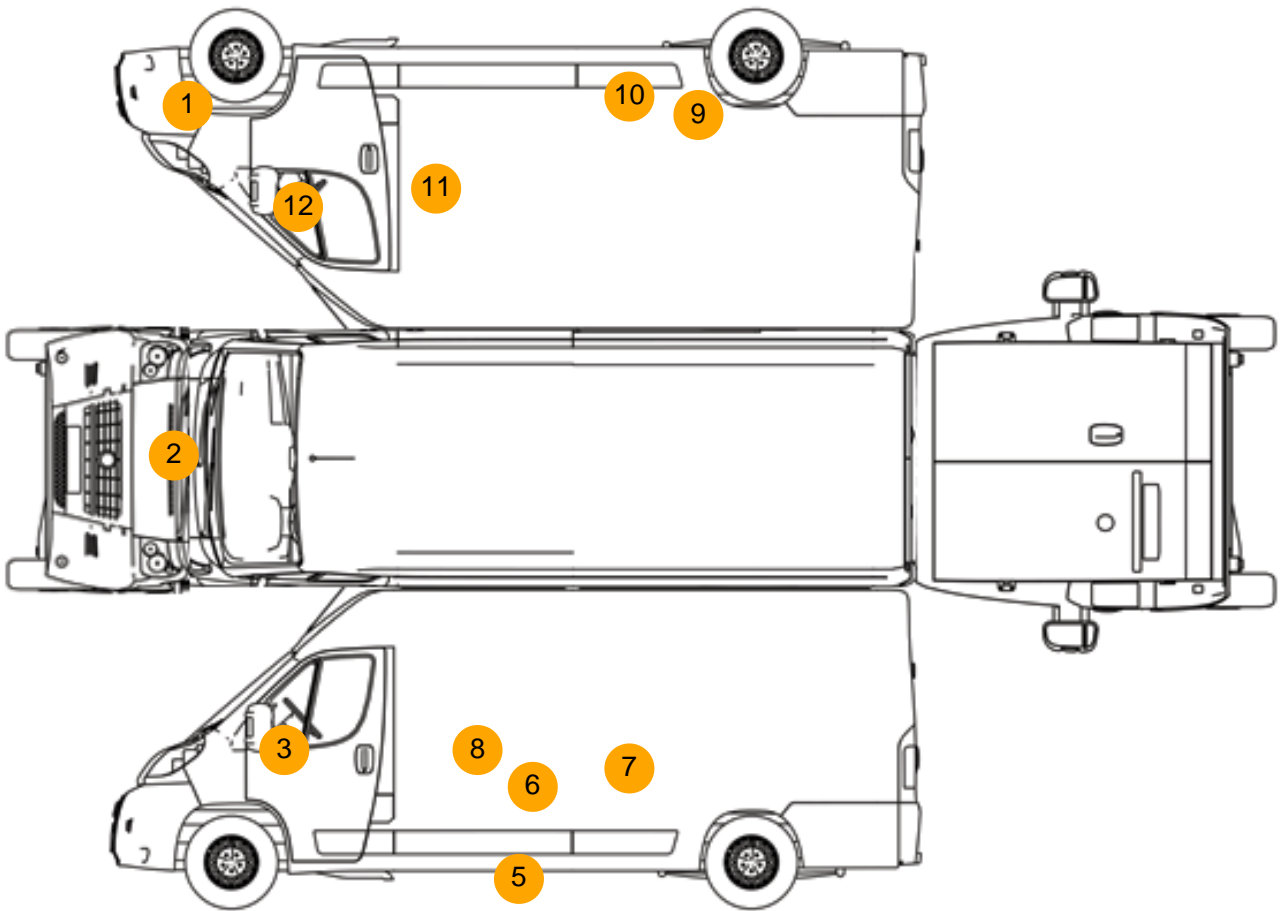
- Rear parking sensor
- Air conditioning
- Front electric windows

Photos





Condition Check



Damage Photos



1: Bumper Front Moulding
Scuffed (Unpainted)
Up To 100mm

2: Bonnet
Scratched
Over 25mm Thru Paint



3: Door Mirror Assy nsf
Scuffed (Unpainted)
UpTo 100mm

4: Seat Base Cover osf
Holed
Over 3mm



5: Sill ns
Dented
With Paint Damage

6: Door nsr
Dented
With Paint Damage



7: Door nsr
Dented
With Paint Damage

8: Door nsr
Dented
Over 2 UpTo 10mm



9: Qtr Panel Moulding os
Missing
Replace

10: Qtr Panel Moulding os
Broken
Replace



11: Door osf
Chipped
Edge Chip

12: Door Mirror Assy osf
Scuffed (Unpainted)
UpTo 100mm



13: Steering Wheel
Damaged
Replace

Interior

Carpet Condition	Average	Upholstery Condition	Average
Seat Condition	Average	Odour	No
Engine Runs	OK	Gearbox 1st and Reverse Test	OK
Brakes	OK	Clutch Slip Test from Static	OK
Parking Brake	OK	Gearbox Static Gear Selection (engine running)	OK
		No Excessive Smoking	OK
EML light illuminated	OK	Oil warning light illuminated	OK
Airbag light illuminated	OK	DPF light illuminated	OK
ABS light illuminated	OK	Service indicator light illuminated	OK