

VEHICLE INSPECTION REPORT

YK19ZFJ

Volvo FM 420

Inspection

Serious Damage? No

Vehicle

VAT Plus VAT

V5 Buyer To Apply

Details

Reg. date 11/03/2019

Year 2019

Mileage 341,390 Km Not Warranted

Fuel Type Diesel

Colour WHITE

VIN YV2XTW0G8KA840259

Body Style Tipper

Cab Type DAY CAB

Gearbox AUTOMATIC

Axle Combi 8x4

Rear Suspension Steel

WARNING LIGHT ON DASH THOMPSONS STEEL BODY, BINOTTO TIPPING GEAR, SHEETING SYSTEM, WEIGH SYSTEM

Tyres

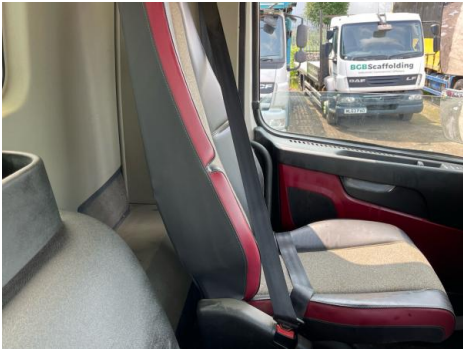
NSF	NSI1	NSI2	NSI3	NSI4
OSF	OSI1	OSI2	OSI3	OSI4
Spare	NSO1	NSO2	NSO3	NSO4
	OSO1	OSO2	OSO3	OSO4

Features

- Bluetooth connection
- Cruise control
- Digital radio
- Air conditioning
- Front electric windows
- Central locking
- Partial leather seat trim

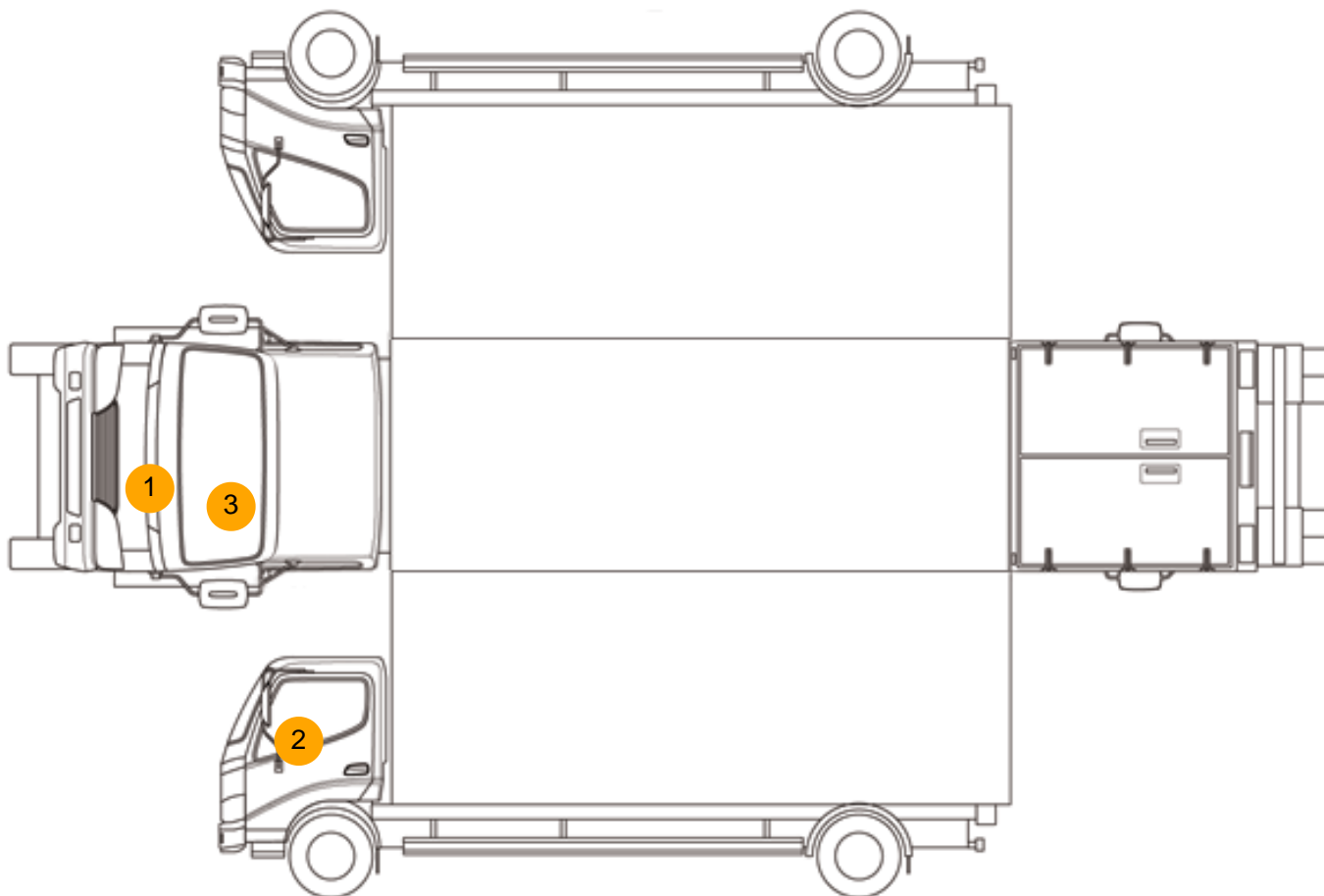
Photos







Condition Check



Damage Photos



1: Bonnet
Chipped
Multiple Chips



2: Door Mirror Assy osf
Broken
Replace



3: Screen Front
Chipped
Over 10mm



4: Dash Warning Lights
Displayed
No Action

Interior

Carpet Condition		OK	Upholstery Condition		OK
Seat Condition		OK	Odour		-
Engine Runs		OK	No Excessive Smoking		OK
EML light illuminated		OK	DPF light illuminated		OK
ABS light illuminated		Fault			