

VEHICLE INSPECTION REPORT

DG16EDR

Man TGS 26.360

Inspection

Serious Damage? No

Vehicle

VAT Plus VAT

V5 To Follow

Details

Reg. date	16/05/2016	Colour	BLUE	Cab Type	DAY CAB
Year	2016	VIN	WMA18SZZ4GP072155	Axle Combi	6x2
Mileage	273,497 Km Warranted	Body Style	Dropside & Crane	Steering Combi	Rear-Lift Steer
Fuel Type	Diesel	MOT Due	31/03/2026	Rear Suspension	Air

HMF 1430 L1 REMOTE CRANE (YEAR 2016), BEEN ON FULL R&M CONTRACT FROM NEW

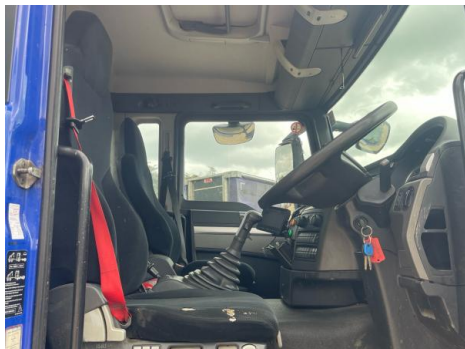
Tyres

NSF	NSI1	NSI2	NSI3	NSI4
OSF	OSI1	OSI2	OSI3	OSI4
Spare	NSO1	NSO2	NSO3	NSO4
	OSO1	OSO2	OSO3	OSO4

Features

- Park assist camera

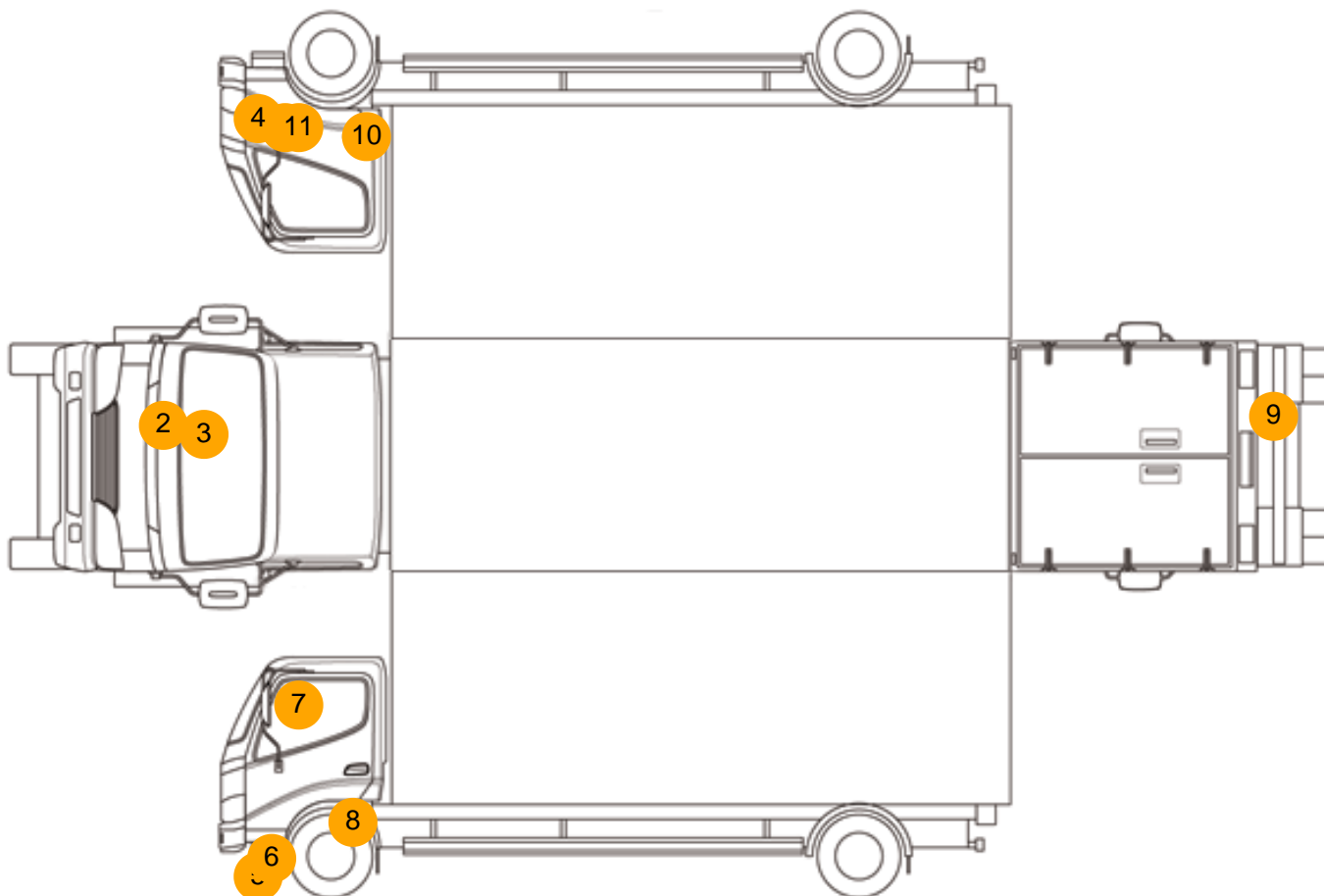
Photos







Condition Check



Damage Photos



1: Moulding of Wing
Missing
Replace



2: Bonnet
Poor Previous Repair
Poor Colour



3: Bonnet
Poor Previous Repair
Poor Colour



4: Bumper Front
Scratched
Over 25mm Not Thru Paint



5: Bumper Front
Scratched
Over 25mm Not Thru Paint



6: General Exterior
Soiled
Light



7: Door Mirror Assy nsf
Missing
Replace



8: General Exterior
Soiled
Light



9: Bumper Rear
Rusted
Over 5mm



10: General Exterior
Soiled
Light



11: General Exterior
Soiled
Light



12: Seat Base Cover osf
Holed
Over 3mm



13: In Car Entertainment
Broken
Replace



14: Handle Inner osf
Damaged
Replace



15: General Interior
Soiled
Light

Interior

Carpet Condition		Average	Upholstery Condition		Average
Seat Condition		Average	Odour		-
Engine Runs	OK		Gearbox 1st and Reverse Test	OK	
Brakes	OK		Clutch Slip Test from Static	OK	
Parking Brake	OK		Gearbox Static Gear Selection (engine running)	OK	
			No Excessive Smoking	OK	
EML light illuminated	OK		Oil warning light illuminated	OK	
Airbag light illuminated	OK		DPF light illuminated	OK	
ABS light illuminated	OK		Service indicator light illuminated	OK	