

VEHICLE INSPECTION REPORT

MV69JGX

Daf LF 180

Inspection

Serious Damage? No

Vehicle

VAT Plus VAT

V5 To Follow

Details

Reg. date 10/10/2019

Colour WHITE

Cab Type DAY CAB

Year 2019

VIN XLRAEL1500L490111

Gearbox MANUAL

Mileage 287,909 Km Warranted

Body Style Demount chassis

Rear Suspension Air

Fuel Type Diesel

MOT Due 30/11/2025

Rear Doors Barn

C/W BOX BODY

Tyres

NSF NSI1

NSI2

NSI3

NSI4

OSF OSI1

OSI2

OSI3

OSI4

Spare NSO1

NSO2

NSO3

NSO4

OSO1

OSO2

OSO3

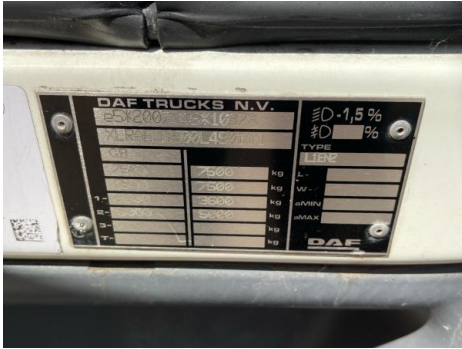
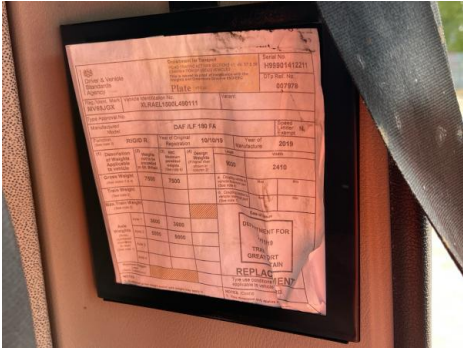
OSO4

Features

- Bluetooth connection
- Radio/CD
- Cruise control
- Front electric windows
- Navigation system
- Cloth seat trim
- Park assist camera

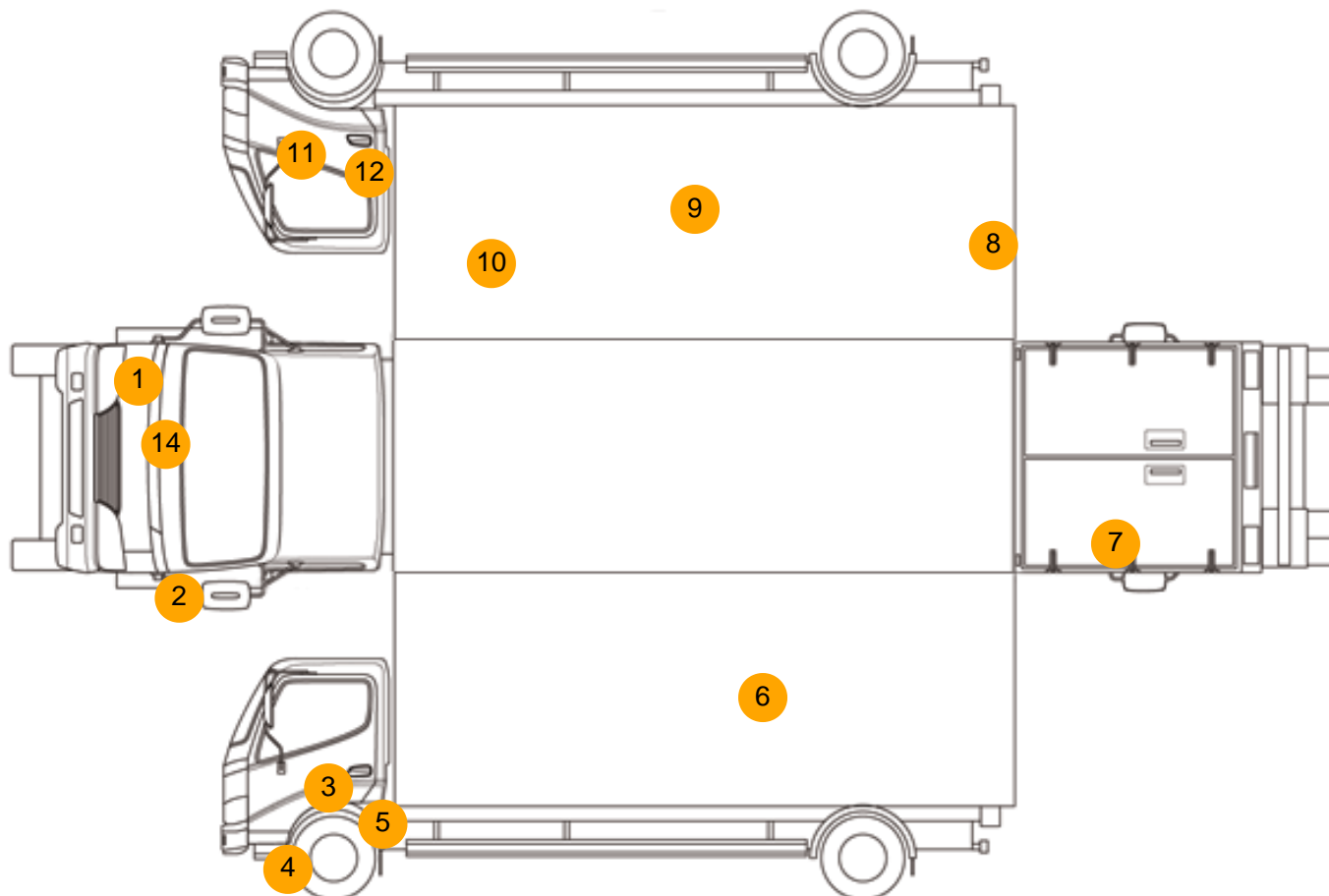
Photos







Condition Check



Damage Photos



1: Panel Front
Scratched
Over 25mm Thru Paint



2: Panel Front
Scratched
Over 25mm Thru Paint



3: Door nsf
Scratched
Over 25mm Thru Paint



4: Bumper Front Moulding
Scuffed (Unpainted)
Over 100mm



5: Wing nsf
Scratched
Over 25mm Thru Paint



6: Qtr Panel nsr
Scratched
Over 25mm Thru Paint



7: Door nsr
Dented
With Paint Damage



8: Qtr Panel osr
Scratched
Over 25mm Thru Paint



9: Qtr Panel osr
Scratched
Over 25mm Not Thru Paint



10: Qtr Panel osr
Cracked
Replace



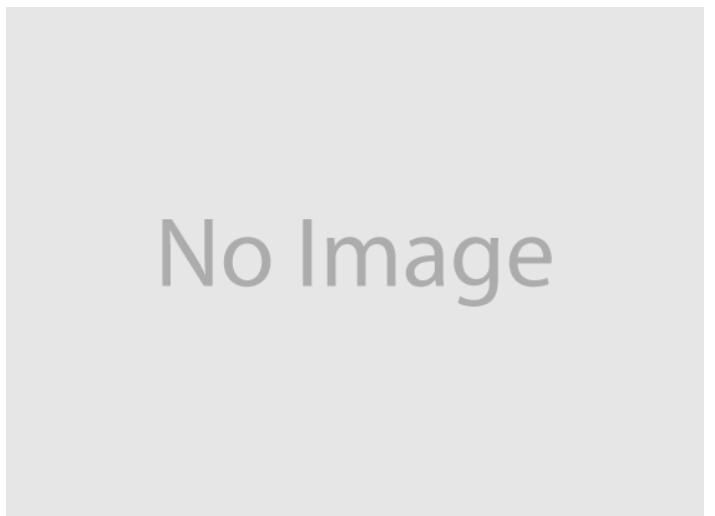
11: Door osf
Dented
With Paint Damage



12: Door osf
Scratched
Over 25mm Thru Paint



13: Seat Base Cover osf
Torn
Over 3mm



14: Bonnet
Chipped
Multiple Chips



15:

Interior

Carpet Condition	OK	Upholstery Condition	OK
Seat Condition	Poor	Odour	-
Engine Runs	OK	No Excessive Smoking	OK