

VEHICLE INSPECTION REPORT

DW19UGL

Daf LF 180

Inspection

Serious Damage? No

Vehicle

VAT Plus VAT

V5 To Follow

Details

Reg. date 24/07/2019

VIN XLRAEL1500L489304

Axle Combi 4x2

Year 2019

Body Style Box Van

Rear Doors Roller

Mileage 152,675 Km Warranted

MOT Due 30/04/2026

Tail Lift Column

Fuel Type Diesel

Cab Type DAY CAB

Colour WHITE

Gearbox MANUAL

Tyres

NSF NSI1

NSI2

NSI3

NSI4

OSF OSI1

OSI2

OSI3

OSI4

Spare NSO1

NSO2

NSO3

NSO4

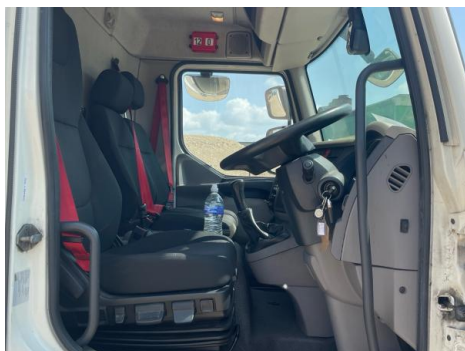
OSO1

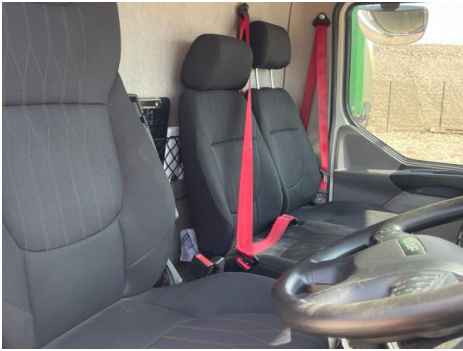
OSO2

OSO3

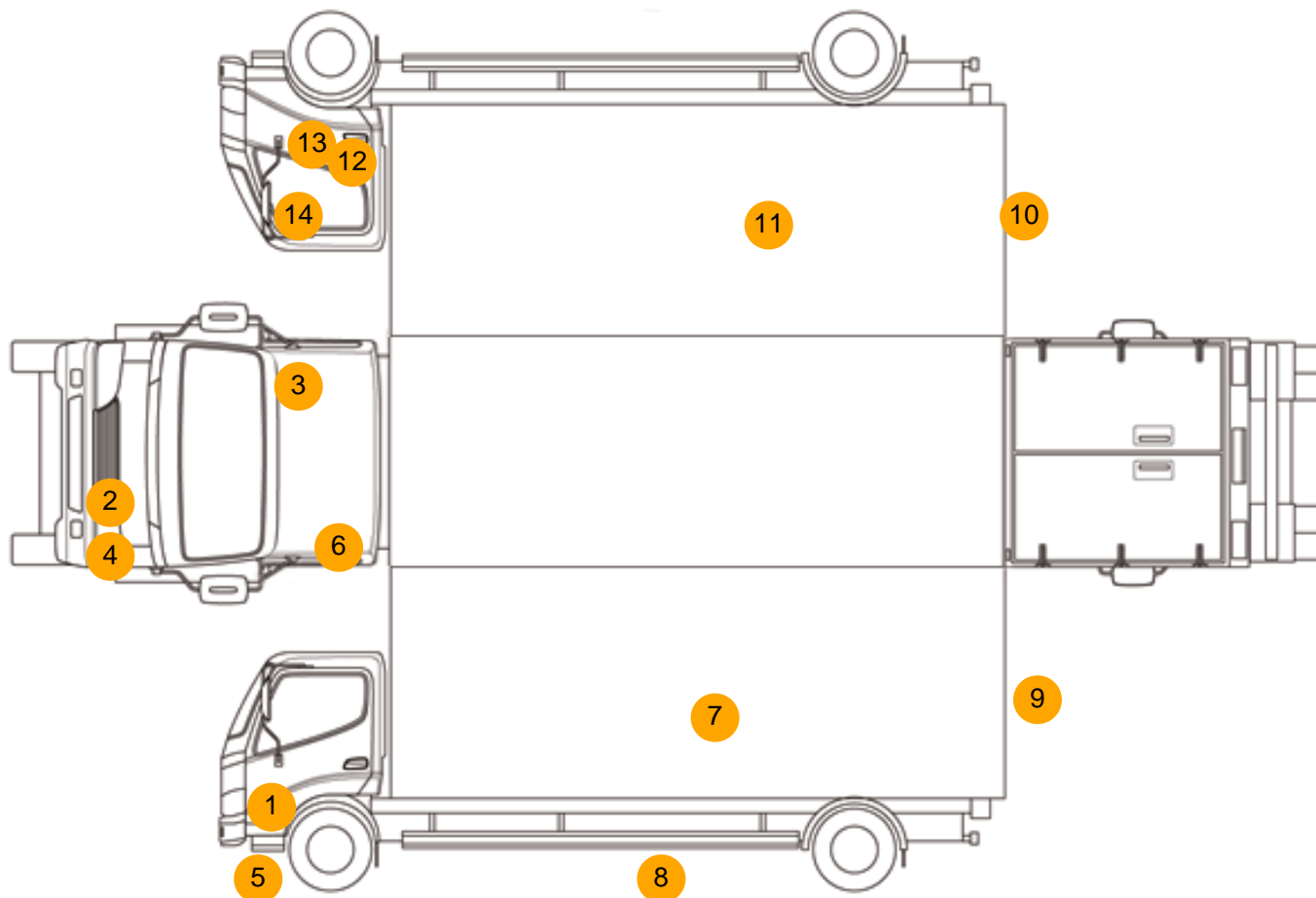
OSO4

Photos





Condition Check



Damage Photos



1: Moulding nsf Wing
Scratched (Painted)
Over 25mm Thru Paint



2: Bumper Front
Cracked
Over 25mm



3: Other
N/A
N/A



4: Bumper Front
Scratched
Over 100mm Thru Paint



5: General Exterior
Soiled
Light



6: General Exterior
Soiled
Light



7: General Exterior
Soiled
Light



8: General Exterior
Soiled
Light



9: General Exterior
Soiled
Light



10: General Exterior
Soiled
Light



11: General Exterior
Soiled
Light



12: Door osf
Dented
With Paint Damage



13: Door osf
Scratched
Over 25mm Thru Paint



14: Door Mirror Assy osf
Missing
Replace



15: Seat Base Cover nsf
Burn
Over 3mm

16: Seat Base Cover nsf
Torn
Over 3mm

Interior

| Carpet Condition | | Average | | Upholstery Condition | | Average | |
|--------------------------|----|---------|--|--|----|---------|--|
| Seat Condition | | Average | | Odour | | - | |
| Engine Runs | OK | | | Gearbox 1st and Reverse Test | OK | | |
| Brakes | OK | | | Clutch Slip Test from Static | OK | | |
| Parking Brake | OK | | | Gearbox Static Gear Selection (engine running) | OK | | |
| | | | | No Excessive Smoking | OK | | |
| EML light illuminated | OK | | | Oil warning light illuminated | OK | | |
| Airbag light illuminated | OK | | | DPF light illuminated | OK | | |
| ABS light illuminated | OK | | | Service indicator light illuminated | OK | | |