

VEHICLE INSPECTION REPORT

RX16WVF

Daf LF 250

Inspection

Serious Damage? No

Vehicle

VAT Plus VAT

V5 Present

Details

Reg. date 17/06/2016

Year 2016

Mileage 126,894 Miles Not Warranted

Fuel Type Diesel

Colour WHITE

VIN XLRAEL3700L451401

Body Style Gully Emptier

Keys 2

Cab Type DAY CAB

Gearbox Automatic

Axle Combi 4x2

Steering Combi Steer

Rear Suspension Steel

WHALE BODY (YEAR 2016) FULL REAR DOOR, REAR JETTING REEL (NO HOSE)

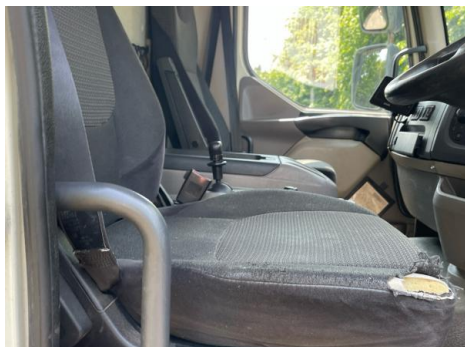
Tyres

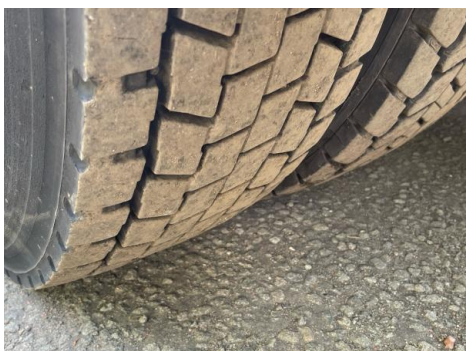
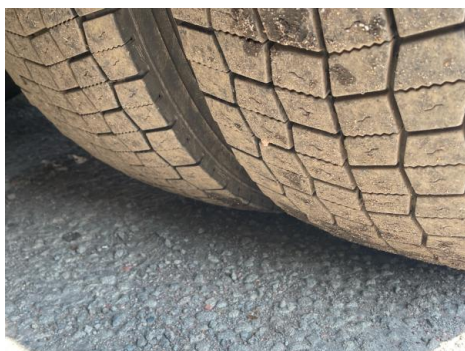
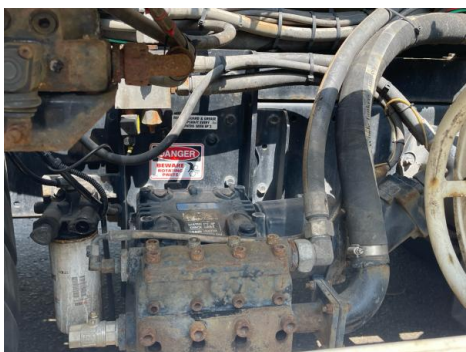
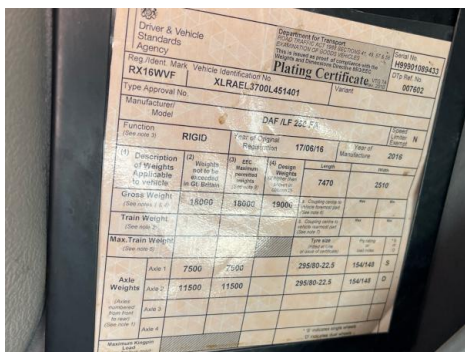
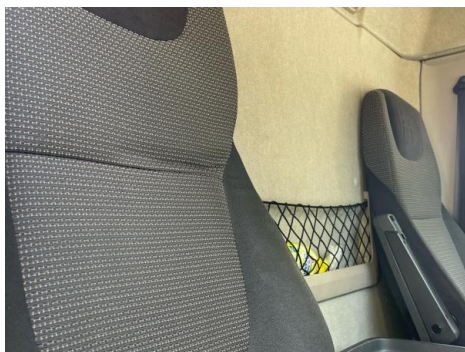
NSF	NSI1	NSI2	NSI3	NSI4
OSF	OSI1	OSI2	OSI3	OSI4
Spare	NSO1	NSO2	NSO3	NSO4
	OSO1	OSO2	OSO3	OSO4

Features

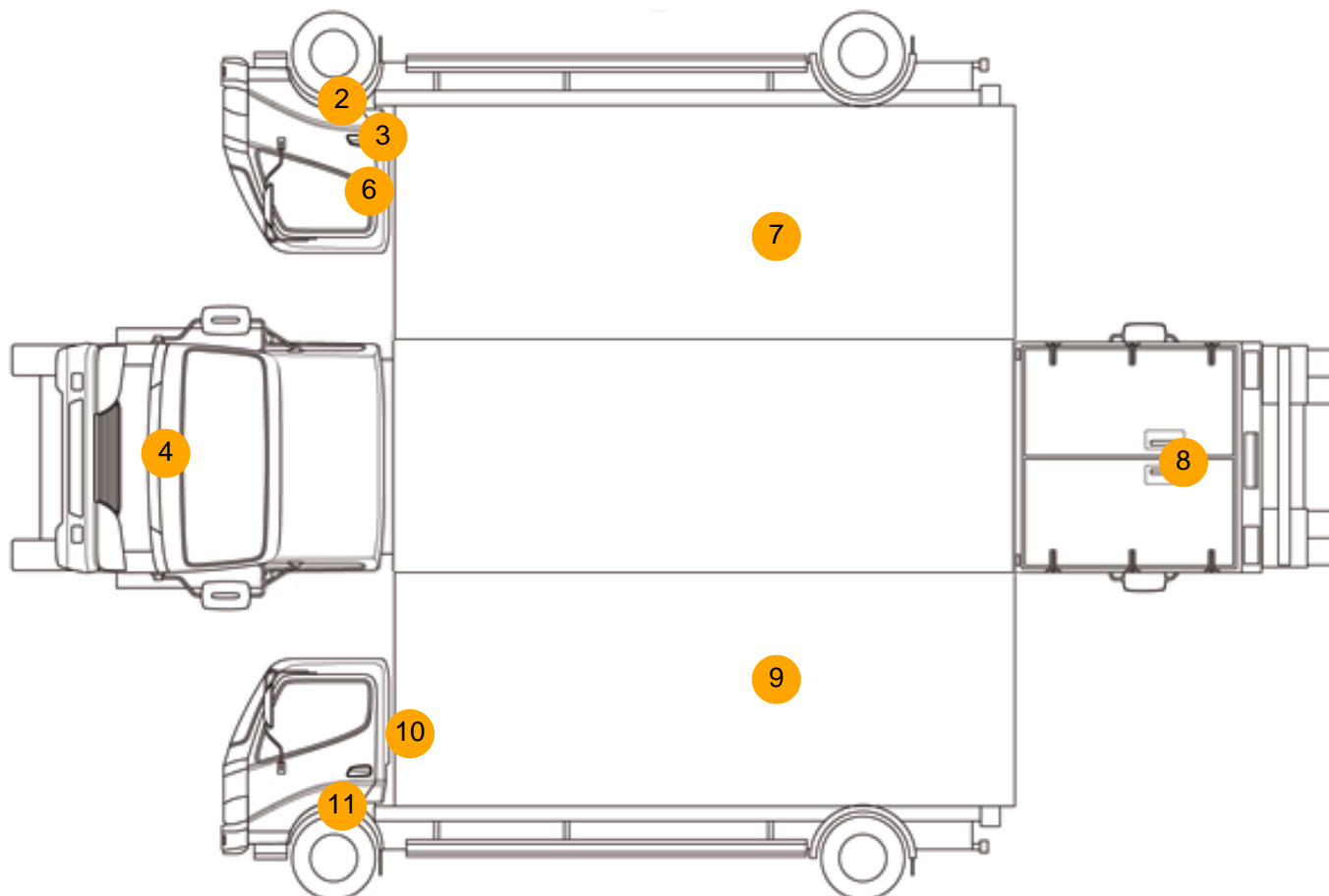
- Cruise control
- Park assist camera
- Air conditioning
- Drivers airbag
- Cloth seat trim

Photos





Condition Check



Damage Photos



1: Seat Base Cover osf
Torn
Over 3mm



2: Sill os
Scratched
Over 25mm Thru Paint



3: Door Moulding osf
Scuffed (Unpainted)
Over 100mm



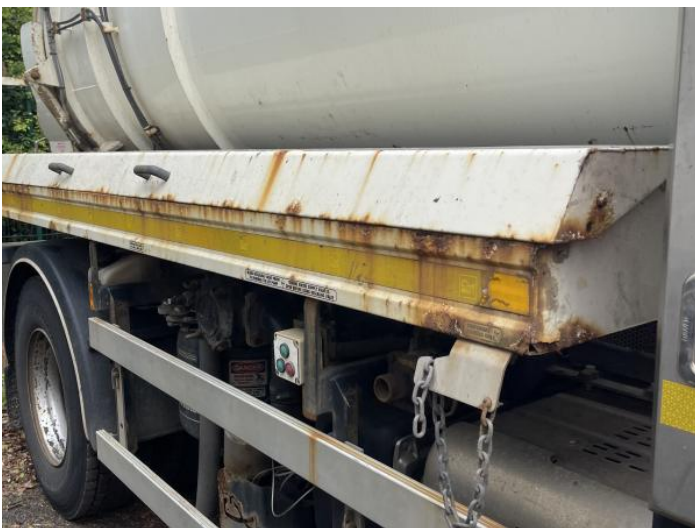
4: Bonnet
Chipped
1 To 5



5: Bumper Front
Rusted
Over 5mm



6: Door osf
Dented
Over 30mm



7: Qtr Panel osr
Rusted
Over 5mm



8: Tailgate
Rusted
Over 5mm



9: Qtr Panel nsr
Rusted
Over 5mm



10: B Post ns
Dented
With Paint Damage



11: Door nsf
Dented
Over 30mm

Interior

Carpet Condition	Average		Upholstery Condition	Average
Seat Condition	Average		Odour	-
Engine Runs	OK		Gearbox 1st and Reverse Test	OK
Brakes	OK		Clutch Slip Test from Static	OK
Turbo Boosting	OK		Gearbox Static Gear Selection (engine running)	OK
Parking Brake	OK		No Excessive Smoking	OK
EML light illuminated	OK		Oil warning light illuminated	OK
Airbag light illuminated	OK		DPF light illuminated	OK
ABS light illuminated	OK		Service indicator light illuminated	OK

Windows

OK

Radio

OK

Steering

OK