

# VEHICLE INSPECTION REPORT

**DG66PNJ**

## Man Tgs 26.360

### Inspection

Serious Damage? No

### Vehicle

VAT Plus VAT

V5 To Follow

### Details

Reg. date 27/02/2017

VIN WMA18SZZ8GM715544

Axle Combi 6x2

Year 2017

Body Style Dropside & Crane

Steering Combi Rear-Lift Steer

Mileage 109,002 Km Warranted

MOT Due 30/11/2025

Rear Suspension Air

Fuel Type Diesel

Cab Type DAY CAB

Colour BLUE

Gearbox MANUAL

HMF 1420K-RC REMOTE CRANE (2017), SURROUND CAMERA SYSTEM, BEEN ON FULL R&M CONTRACT FROM NEW

### Tyres

NSF NSI1 NSI2 NSI3 NSI4

OSF OSI1 OSI2 OSI3 OSI4

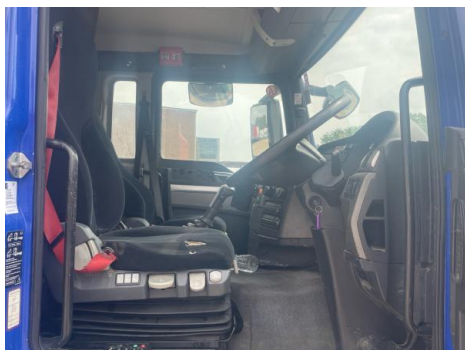
Spare NSO1 NSO2 NSO3 NSO4

OSO1 OSO2 OSO3 OSO4

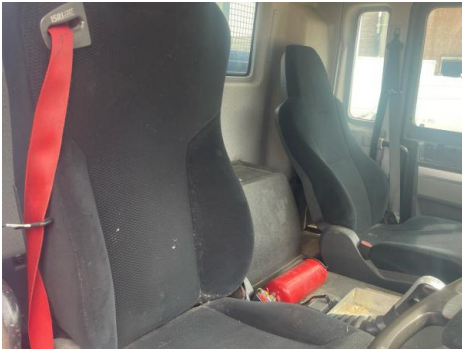
## Features

- Park assist camera

## Photos

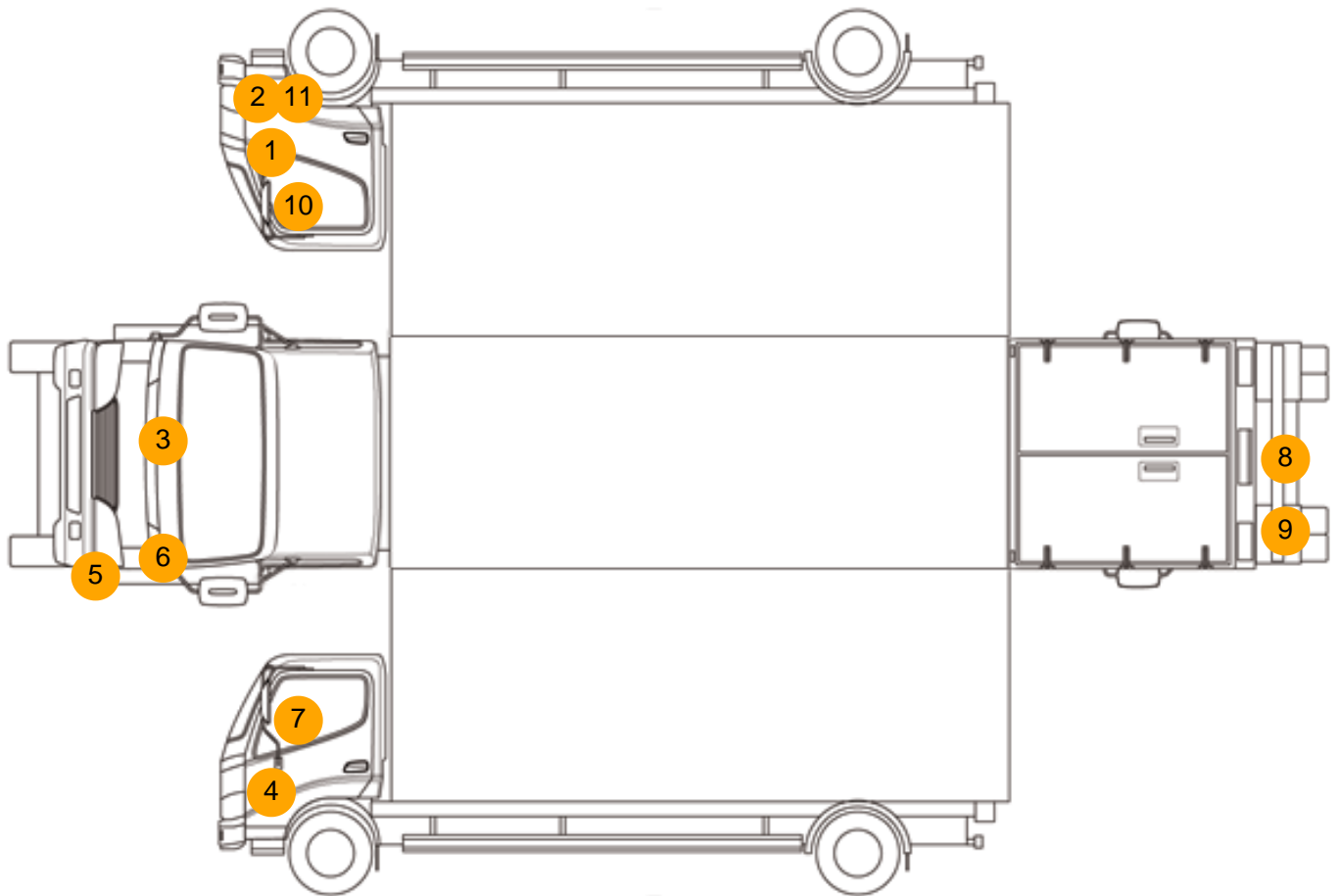








## Condition Check



## Damage Photos



1: Moulding on Wing  
Scratched (Painted)  
Over 25mm Thru Paint



2: Fog Lamp Surround is  
Scuffed (Unpainted)  
Over 100mm



3: Bonnet  
Scratched  
Over 25mm Thru Paint



4: Fog Lamp Surround ns  
Scuffed (Unpainted)  
Over 100mm



5: Bumper Front  
Scratched  
Over 25mm Not Thru Paint



6: Moulding nsf Wing  
Scratched (Painted)  
Over 25mm Thru Paint



7: Door Mirror Assy nsf  
Broken  
Replace



8: Bumper Rear  
Dented  
Over 30mm





9: Bumper Rear  
Rusted  
Over 5mm



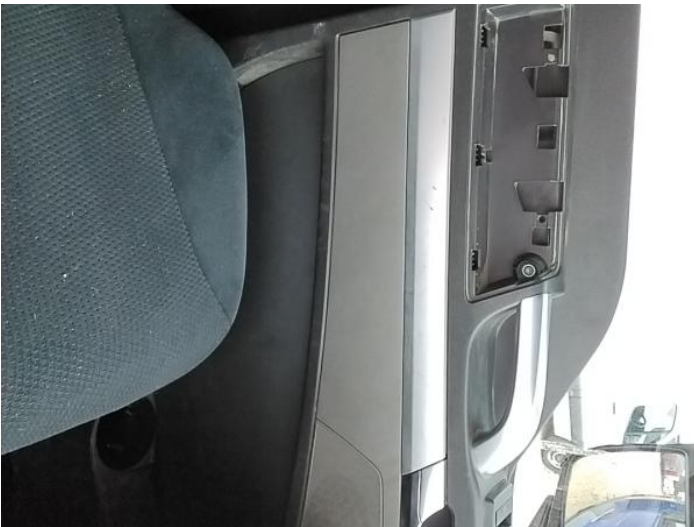
10: Door Mirror Assy osf  
Broken  
Replace



11: General Exterior  
Soiled  
Light



12: Seat Base Cover osf  
Holed  
Over 3mm



13: Door Pad nsf  
Missing  
Replace



14: Other  
N/A  
N/A



15: Other  
N/A  
N/A

Interior

Carpet Condition		Upholstery Condition	
Seat Condition		Odour	
Average		Average	
Average		-	
Engine Runs	OK	Gearbox 1st and Reverse Test	OK
Brakes	OK	Clutch Slip Test from Static	OK
Parking Brake	OK	Gearbox Static Gear Selection (engine running)	OK
		No Excessive Smoking	OK
EML light illuminated	OK	Oil warning light illuminated	OK
Airbag light illuminated	OK	DPF light illuminated	OK
ABS light illuminated	OK	Service indicator light illuminated	OK