

VEHICLE INSPECTION REPORT

LT68GB0

Mercedes-Benz Arocs 3240

Inspection

Serious Damage? No

Vehicle

VAT Plus VAT
V5 Buyer To Apply

Details

Reg. date	05/10/2018	Colour	WHITE	Cab Type	DAY CAB
Year	2018	VIN	WDB96423020235668	Gearbox	AUTOMATIC
Mileage	145,941 Km Warranted	Body Style	Tipper Grab	Axle Combi	8x4
Fuel Type	Diesel	MOT Due	31/01/2026	Rear Suspension	Steel

PALFINGER EPSILON M125L CRANE (YEAR 2017), MTE LTD STEEL BODY TIPPING GEAR, SHEETING SYSTEM, SURROUND CAMERA SYSTEM, POER INVERTER & OUTLETS

Tyres

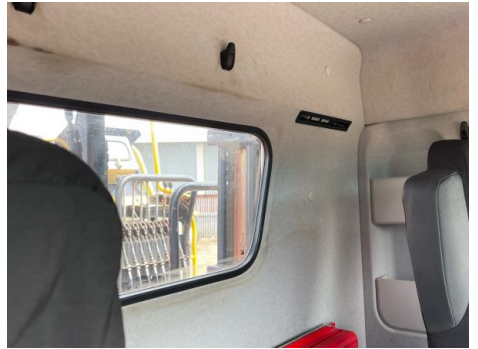
NSF	NSI1	NSI2	NSI3	NSI4
OSF	OSI1	OSI2	OSI3	OSI4
Spare	NSO1	NSO2	NSO3	NSO4
	OSO1	OSO2	OSO3	OSO4

Features

- Bluetooth connection
- Air conditioning
- Cruise control
- Front electric windows
- Park assist camera
- Central locking
- Digital radio
- Cloth seat trim

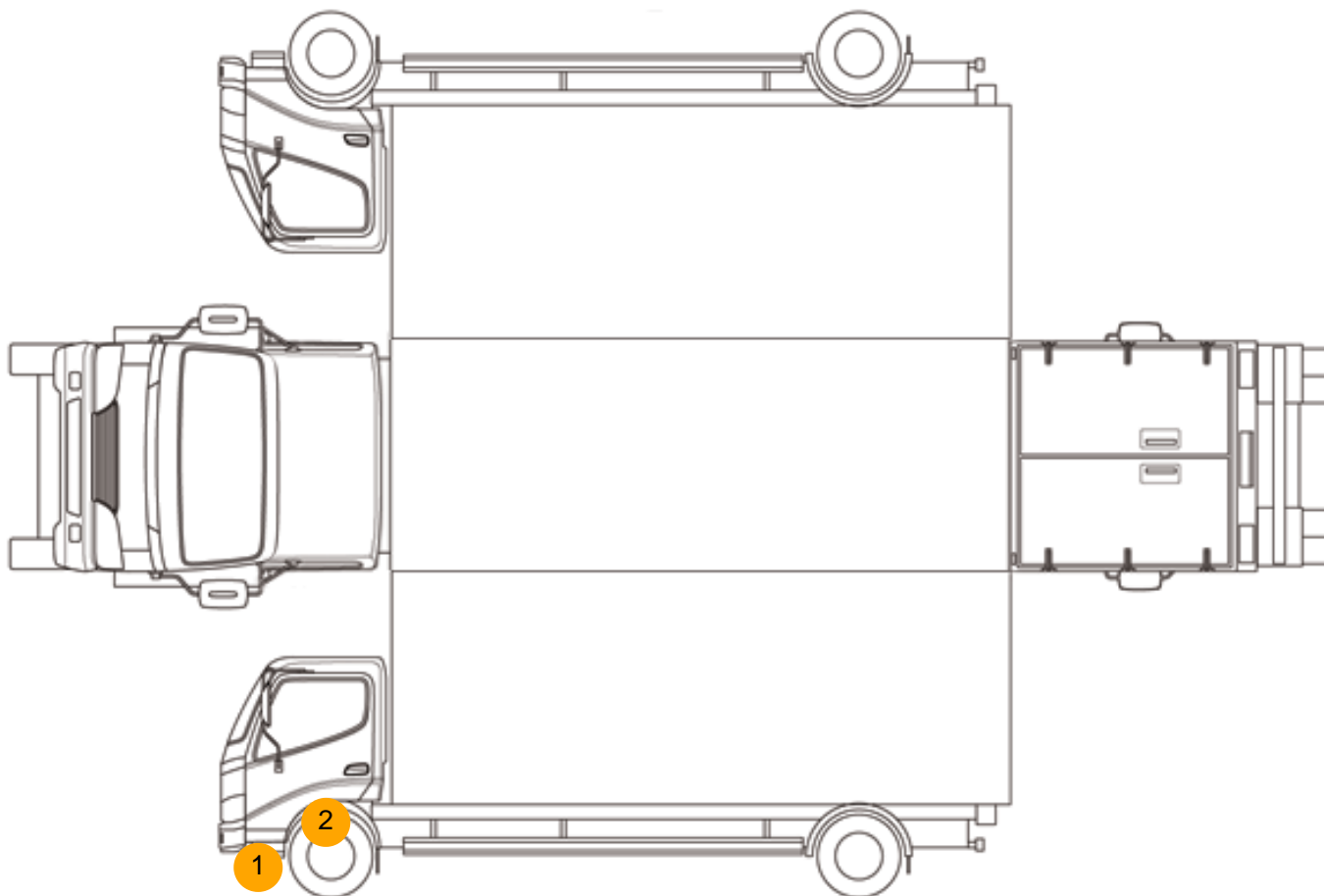
Photos







Condition Check



Damage Photos



1: Bumper Front
Scratched
Over 100mm Thru Paint



2: Wing nsf
Poor Previous Repair
Rippled UpTo 30%



3: Seat Base Cover nsf
Soiled
Heavy



4: Seat Base Cover osf
Soiled
Heavy

Interior

Carpet Condition		OK	Upholstery Condition		OK
Seat Condition		Poor	Odour		-
Engine Runs	OK		No Excessive Smoking	OK	
EML light illuminated	OK		DPF light illuminated	OK	
ABS light illuminated	OK				