

VEHICLE INSPECTION REPORT

DG66UVP

Man TGS 26.360

Inspection

Serious Damage? No

Vehicle

VAT Plus VAT

V5 To Follow

Details

Reg. date	19/12/2016	Colour	BLUE	Cab Type	DAY CAB
Year	2016	VIN	WMA18SZZXHM721184	Axle Combi	6x2
Mileage	213,894 Km Warranted	Body Style	Dropside	Steering Combi	Rear-Lift Steer
Fuel Type	Diesel	MOT Due	30/09/2025	Rear Suspension	Steel

WARNING LIGHT ON DASH HMF 1430-L1 REMOTE CRANE (2016), SURROUND CAMERA SYSTEM, BEEN ON FULL R & M CONTRACT FROM NEW

Tyres

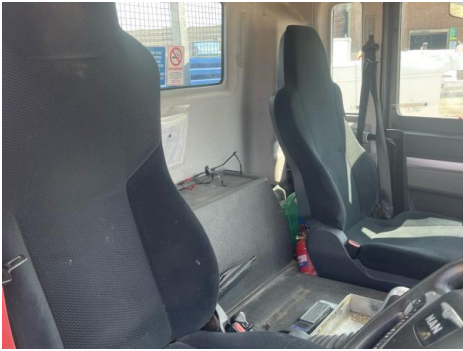
NSF	NSI1	NSI2	NSI3	NSI4
OSF	OSI1	OSI2	OSI3	OSI4
Spare	NSO1	NSO2	NSO3	NSO4
	OSO1	OSO2	OSO3	OSO4

Features

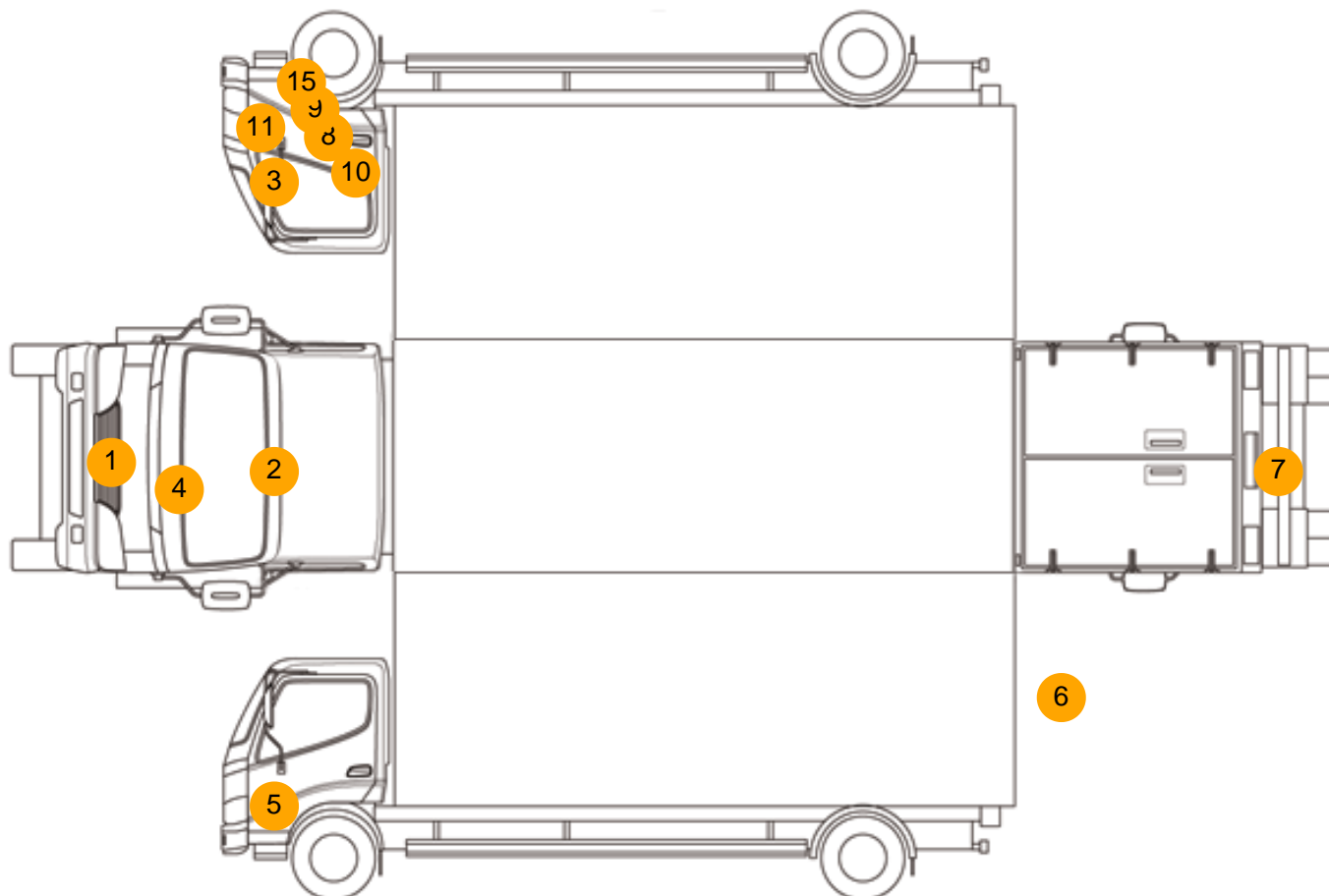
- Park assist camera

Photos





Condition Check



Damage Photos



1: Bumper Front
Scratched
Over 100mm Thru Paint



2: Screen Front
Chipped
Over 10mm



3: Wing osf
Chipped
Multiple Chips



4: Bonnet
Chipped
Multiple Chips



5: Wing nsf
Scratched
Over 25mm Thru Paint



6: General Exterior
Soiled
Light



7: Bumper Rear
Rusted
Over 5mm



8: General Exterior
Soiled
Light



9: General Exterior
Soiled
Light



10: Door osf
Scratched
Over 25mm Thru Paint



11: General Exterior
Soiled
Light



12: Handle Inner osf
Damaged
Replace



13: Seat Base Cover osf
Holed
Over 3mm



14: Other
N/A
N/A



15: General Exterior
Soiled
Light

Interior

Carpet Condition		Average	Upholstery Condition		Average
Seat Condition		Average	Odour		-
Engine Runs	OK		Gearbox 1st and Reverse Test	OK	
Brakes	OK		Clutch Slip Test from Static	OK	
Parking Brake	OK		Gearbox Static Gear Selection (engine running)	OK	
			No Excessive Smoking	OK	
EML light illuminated	OK		Oil warning light illuminated	OK	
Airbag light illuminated	OK		DPF light illuminated	OK	
ABS light illuminated	OK		Service indicator light illuminated	Fault	