

VEHICLE INSPECTION REPORT

PJ16YSM

Daf LF 150

Inspection

Serious Damage? No

Vehicle

VAT Plus VAT

V5 To Follow

Details

Reg. date 17/06/2016

VIN XLRAEL1500L455323

Axle Combi 4x2

Year 2016

Body Style Box Van

Rear Suspension Steel

Mileage 758,984 Km Warranted

Service history Yes

Tail Lift Cantilever

Fuel Type Diesel

MOT Due 30/09/2025

Colour RED

Gearbox MANUAL

Tyres

NSF NSI1

NSI2

NSI3

NSI4

OSF OSI1

OSI2

OSI3

OSI4

Spare NSO1

NSO2

NSO3

NSO4

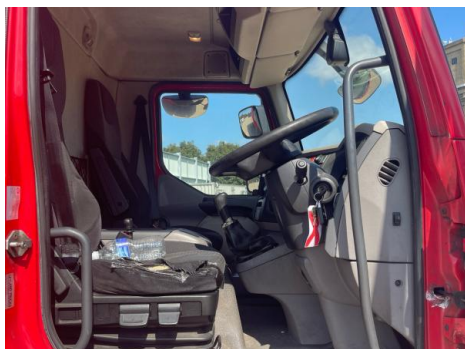
OSO1

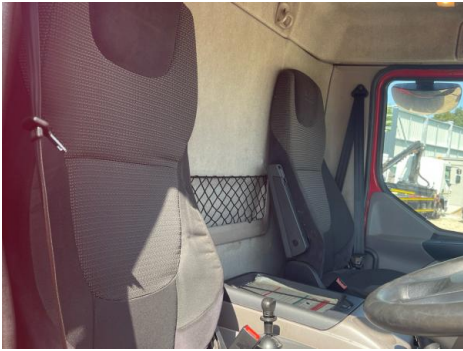
OSO2

OSO3

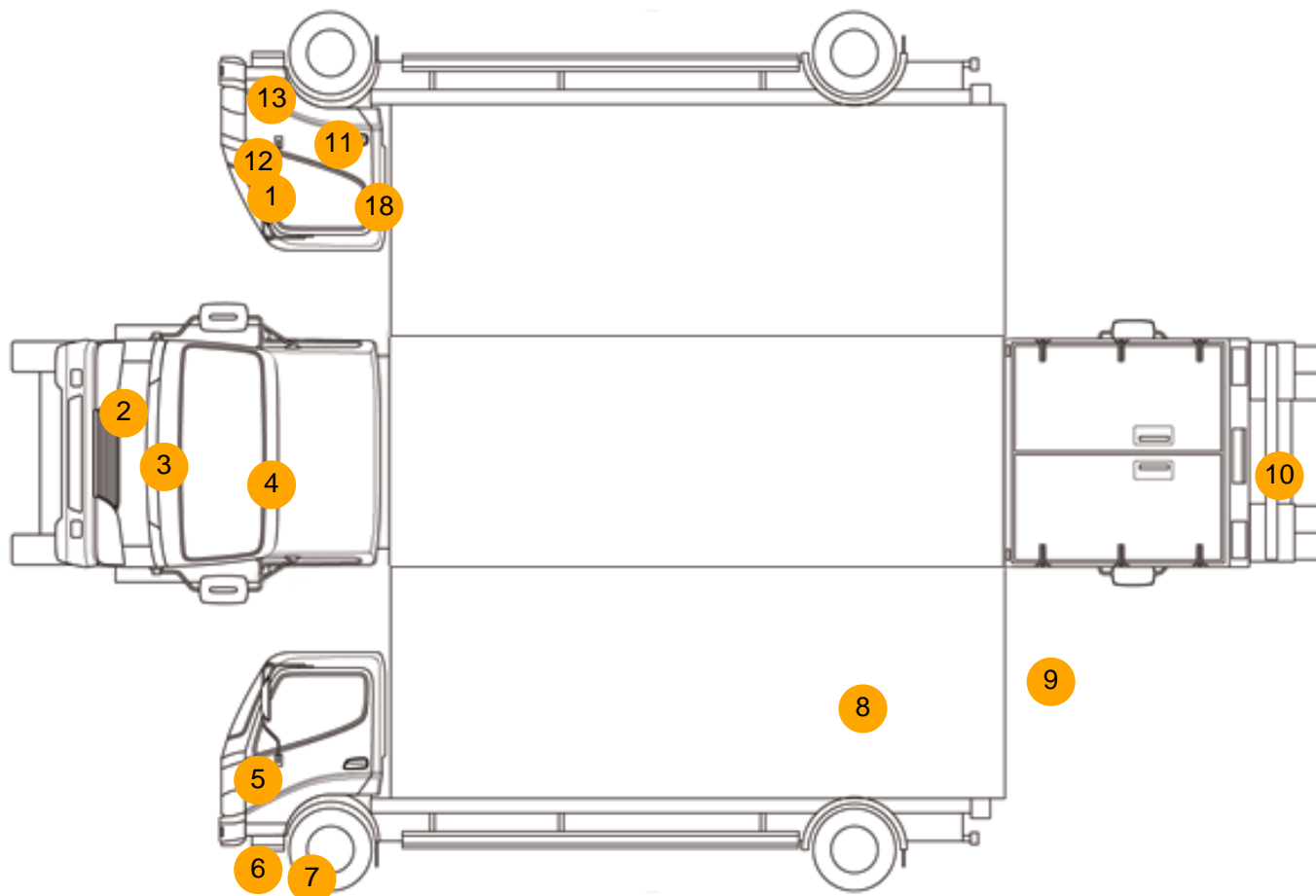
OSO4

Photos





Condition Check



Damage Photos



1: Moulding of Wing
Scratched (Painted)
Up To 25mm Thru Paint



2: Bumper Front
Scratched
Over 100mm Thru Paint



3: Bonnet
Chipped
Multiple Chips



4: Screen Front
Chipped
Over 10mm



5: Moulding nsf Wing
Scratched (Painted)
Over 25mm Thru Paint



6: Bumper Front
Scratched
Over 100mm Thru Paint



7: General Exterior
Soiled
Light



8: General Exterior
Soiled
Light



9: General Exterior
Soiled
Light



10: Bumper Rear
Rusted
Over 5mm



11: Door osf
Scratched
Over 25mm Thru Paint



12: Moulding osf Wing
Scratched (Painted)
Over 25mm Thru Paint



13: General Exterior
Soiled
Light



14: Seat Base Cover osf
Torn
Over 3mm



15: Other
N/A
N/A



16: Other
N/A
N/A



17: In Car Entertainment
Broken
Replace



18: Door osf
Scratched
Over 25mm Thru Paint

Interior

Carpet Condition	Average	Upholstery Condition	Average
Seat Condition	Average	Odour	-
Engine Runs	OK	Gearbox 1st and Reverse Test	OK
Brakes	OK	Clutch Slip Test from Static	OK
Parking Brake	OK	Gearbox Static Gear Selection (engine running)	OK
		No Excessive Smoking	OK
EML light illuminated	OK	Oil warning light illuminated	OK
Airbag light illuminated	OK	DPF light illuminated	OK
ABS light illuminated	OK	Service indicator light illuminated	OK