

# VEHICLE INSPECTION REPORT

**KX70BAV**

## Isuzu D-Max

### Inspection

Serious Damage? No

### Vehicle

VAT Plus VAT

V5 Present

### Details

Reg. date 01/09/2020

Year 2020

Mileage 34,563 Miles Not Warranted

Fuel Type Diesel

Colour WHITE

VIN MPATFS87JKT013902

Body Style Access Platform

Service history Yes

MOT Due Expired

Gearbox MANUAL

Axle Combi 4x2

Rear Suspension Steel

\*GEAR BOX ISSUES, PTO DOES NOT ENGAGE\* PALFINGER P130 A PLATFORM

### Tyres

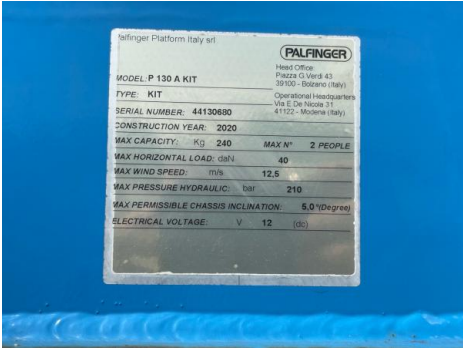
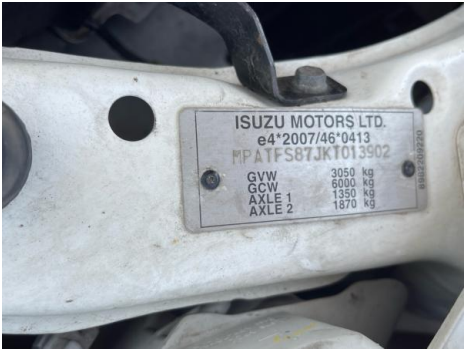
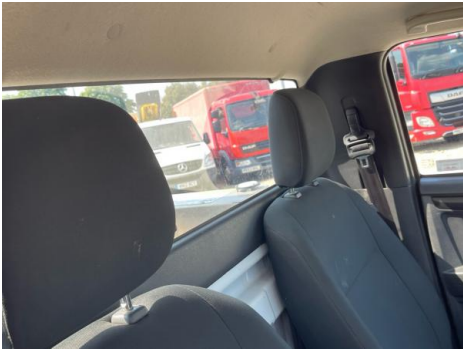
NSF	NSI1	NSI2	NSI3	NSI4
OSF	OSI1	OSI2	OSI3	OSI4
Spare	NSO1	NSO2	NSO3	NSO4
	OSO1	OSO2	OSO3	OSO4

## Features

- Air conditioning

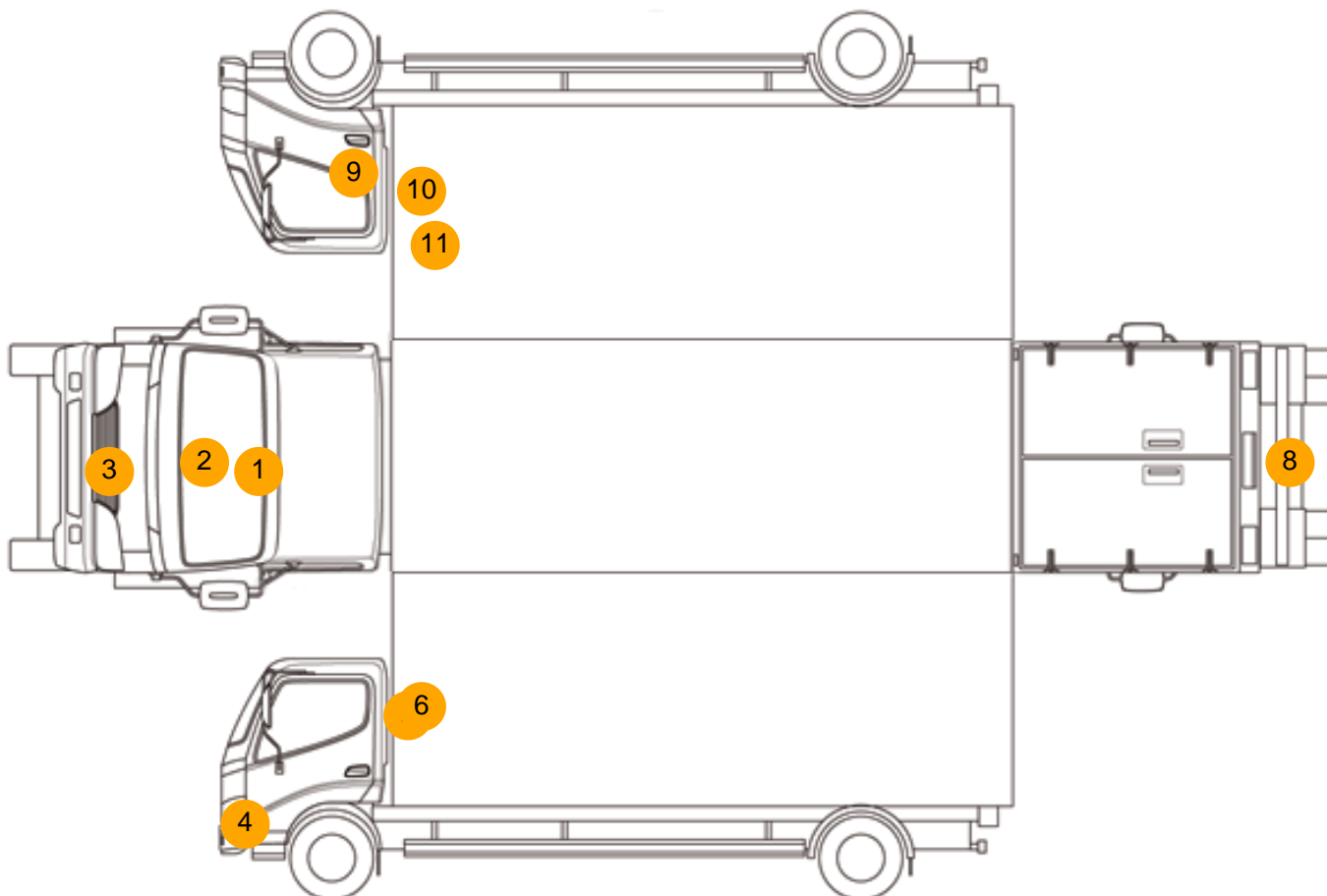
## Photos







## Condition Check



## Damage Photos



1: Screen Front  
Chipped  
UpTo 10mm



2: Bonnet  
Chipped  
Multiple Chips



3: General Exterior  
Soiled  
Light



4: Bumper Front  
Scratched  
Over 25mm Not Thru Paint



5: B Post ns  
Dented  
Over 2 UpTo 10mm



6: B Post ns  
Rusted  
Over 5mm



7: General Exterior  
Soiled  
Light



8: Bumper Rear  
Rusted  
Over 5mm



9: Door osf  
Dented  
Over 30% Of Panel



10: B Post os  
Dented  
Over 2 UpTo 10mm



11: B Post os  
Dented  
With Paint Damage

### Interior

Carpet Condition	Average		Upholstery Condition	Average
Seat Condition	Average		Odour	-
Engine Runs	OK		Gearbox 1st and Reverse Test	OK
Brakes	OK		Clutch Slip Test from Static	OK
Parking Brake	OK		Gearbox Static Gear Selection (engine running)	OK
			No Excessive Smoking	OK
EML light illuminated	OK		Oil warning light illuminated	OK
Airbag light illuminated	OK		DPF light illuminated	OK
ABS light illuminated	OK		Service indicator light illuminated	OK