

VEHICLE INSPECTION REPORT

YE66ZKT

Daf LF 150

Inspection

Serious Damage? No

Vehicle

VAT Plus VAT
V5 Buyer To Apply

Details

Reg. date	29/11/2016	Body Style	Curtainside	Gears	6
Year	2016	Keys	2	Doors	2
Mileage	157,358 Km Warranted	Service history	Full	Steering Combi	Steer
Fuel Type	Diesel	Service documents	Electronic / Online	Rear Doors	Roller
Colour	BLUE	Cab Type	DAY CAB	Tail Lift	Column
VIN	XLRAEL1500L453070	Gearbox	manual		

*FULL R & M CONTRACT *
DEL COLUMN TAIL LIFT

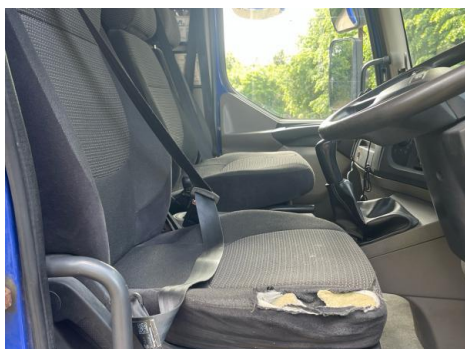
Tyres

NSF	NSI1	NSI2	NSI3	NSI4
OSF	OSI1	OSI2	OSI3	OSI4
Spare	NSO1	NSO2	NSO3	NSO4
	OSO1	OSO2	OSO3	OSO4

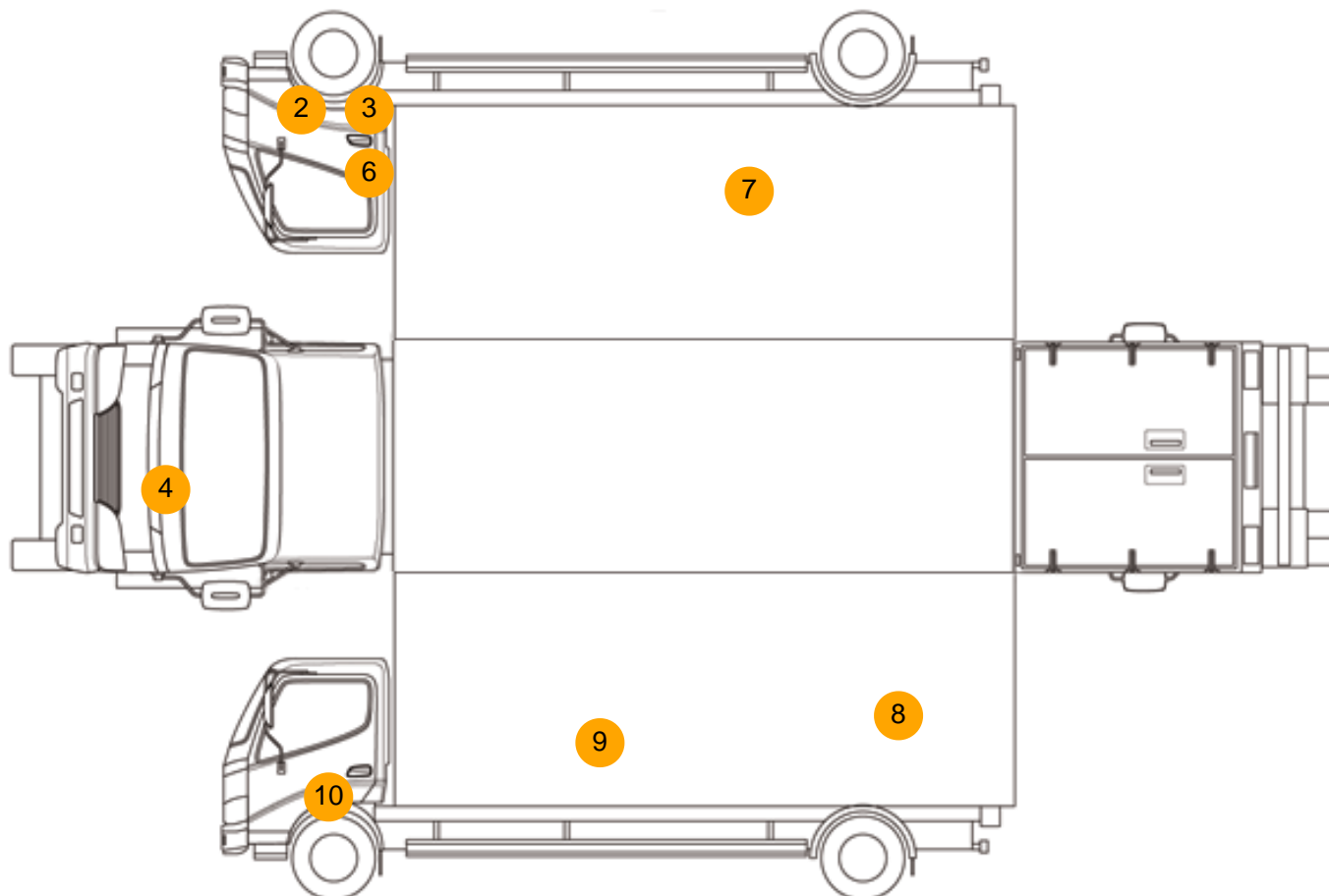
Features

- Cruise control
- Cloth seat trim
- Radio/CD
- Front electric windows
- Central locking

Photos



Condition Check



Damage Photos



1: Seat Base Cover osf
Torn
Over 3mm



2: Sill os
Scratched
Over 25mm Thru Paint



3: Door Moulding osf
Scuffed (Unpainted)
Over 100mm



4: Bonnet
Chipped
Multiple Chips



5: Bumper Front
Dented
With Paint Damage



6: Door osf
Dented
With Paint Damage



7: Qtr Panel osr
Scratched
Over 25mm Thru Paint



8: Qtr Panel nsr
Hole
UpTo 10mm



9: Qtr Panel nsr
Rusted
Over 5mm

10: Door nsf
Dented
Over 30mm

Interior

Carpet Condition	Average		Upholstery Condition	Average
Seat Condition	Poor		Odour	-
Engine Runs	OK		Gearbox 1st and Reverse Test	OK
Brakes	OK		Clutch Slip Test from Static	OK
Turbo Boosting	OK		Gearbox Static Gear Selection (engine running)	OK
Parking Brake	OK		No Excessive Smoking	OK
EML light illuminated	OK		Oil warning light illuminated	OK
Airbag light illuminated	OK		DPF light illuminated	OK
ABS light illuminated	OK		Service indicator light illuminated	OK
Windows	OK		Radio	OK
			Steering	OK