

VEHICLE INSPECTION REPORT

A161464

Volvo B9R PLAXTON PANTHER

Inspection

Serious Damage? No

Vehicle

VAT Plus VAT

V5 To Follow

Details

Reg. date 22/04/2013

Colour WHITE

Gearbox AUTOMATIC

Year 2013

VIN

Axle Combi 4x2

Mileage 214,892 Km Warranted

Body Style Coach

Rear Suspension Air

Fuel Type DIESEL

MOT Due 14/11/2025

5% BUYERS FEE 53 SEATS + DRIVER, KNEEL FUNCTION, FABRIC RECLINING SEATS WITH FOOT RESTS, 3PT SEATBELT, OVERHEAD STOWAGE, REAR EMERGENCY EXIT

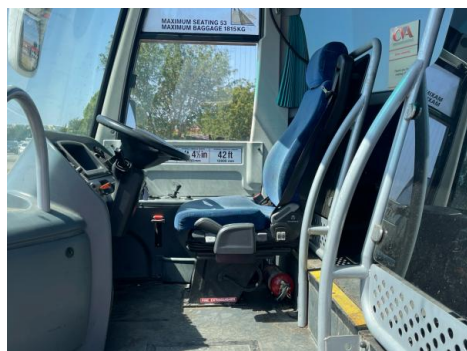
Tyres

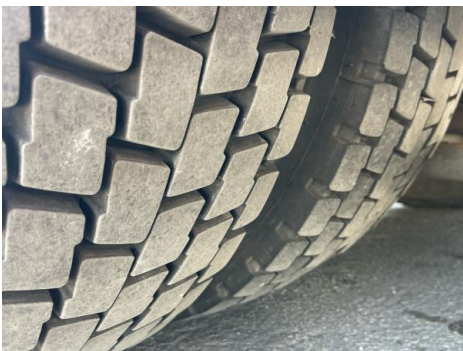
NSF	NSI1	NSI2	NSI3	NSI4
OSF	OSI1	OSI2	OSI3	OSI4
Spare	NSO1	NSO2	NSO3	NSO4
	OSO1	OSO2	OSO3	OSO4

Features

- Bluetooth connection
- Cruise control
- Digital radio
- Radio/CD
- Air conditioning
- Front electric windows
- Cloth seat trim

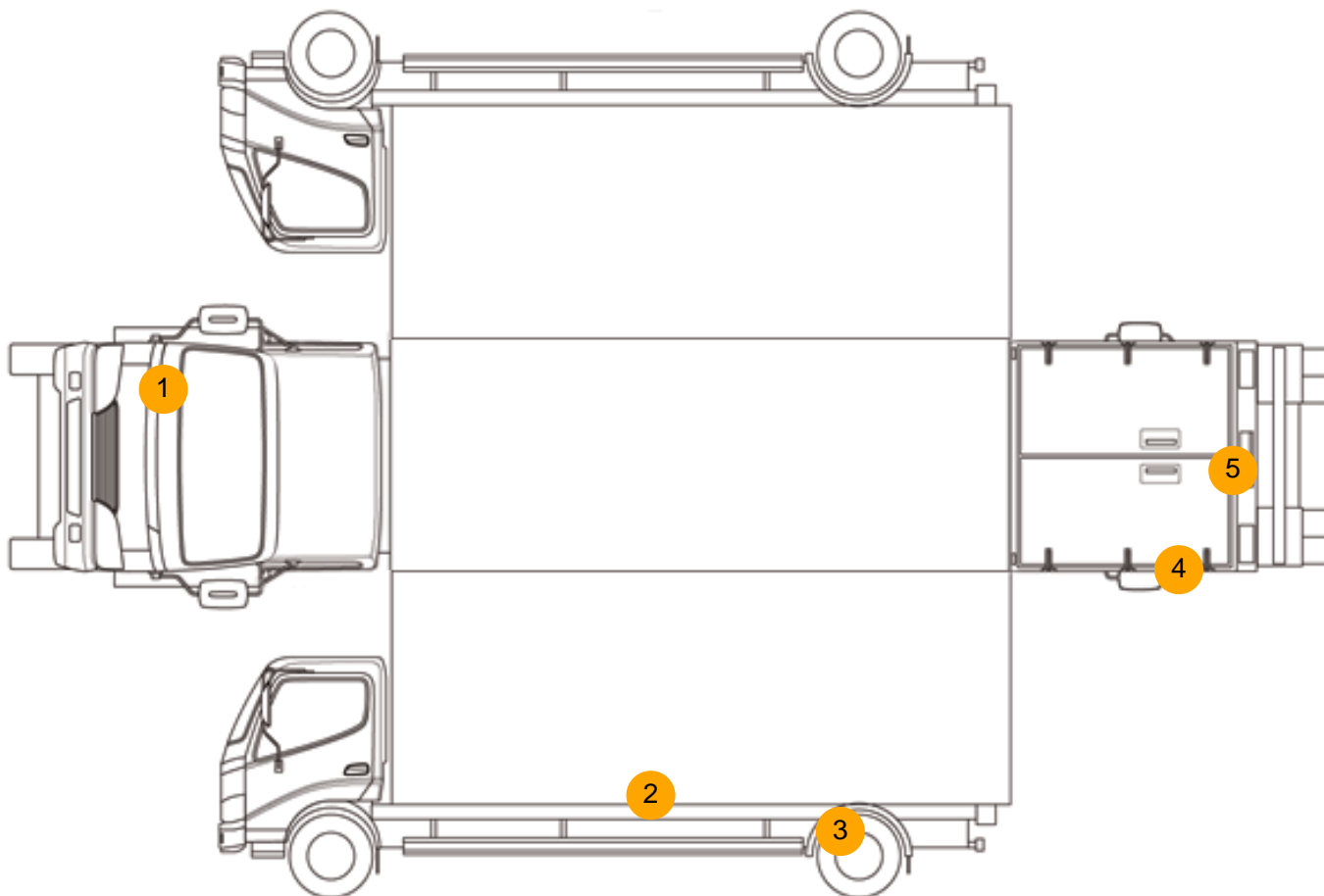
Photos







Condition Check



Damage Photos



1: Bonnet
Scratched
Over 25mm Not Thru Paint



2: Qtr Panel nsr
Dented
Over 30mm



3: Qtr Panel nsr
Dented
Over 30mm



4: B Post ns
Scratched
Over 25mm Thru Paint



5: Boot Lid
Cracked
Replace



6: Carpets Front
Soiled
Heavy



7: Carpets Rear
Soiled
Heavy



8: Seat Base Cover osr
Torn
Over 3mm

Interior

Carpet Condition	Poor	Upholstery Condition	OK
Seat Condition	Poor	Odour	-
Engine Runs	OK	No Excessive Smoking	OK
EML light illuminated	OK	DPF light illuminated	OK
ABS light illuminated	OK		