

# VEHICLE INSPECTION REPORT

**KU68NBF**

## Volvo FL 250

### Inspection

Serious Damage? No

### Vehicle

VAT Plus VAT

V5 Present

### Details

Reg. date 01/09/2018

Year 2018

Mileage 167,689 Km Not Warranted

Fuel Type Diesel

Colour WHITE

VIN YV2T0X1A7JZ120958

Body Style Sweeper

MOT Due 31/08/2025

Cab Type DAY CAB

Gearbox MANUAL

Axle Combi 4x2

Rear Suspension Steel

\*NO POWER STEERING\* JOHNSTON BODY VT651/:21070/9246

### Tyres

NSF NSI1

NSI2

NSI3

NSI4

OSF OSI1

OSI2

OSI3

OSI4

Spare NSO1

NSO2

NSO3

NSO4

OSO1

OSO2

OSO3

OSO4

## Features

- Bluetooth connection
- Cruise control
- Digital radio
- Air conditioning
- Front electric windows
- Cloth seat trim

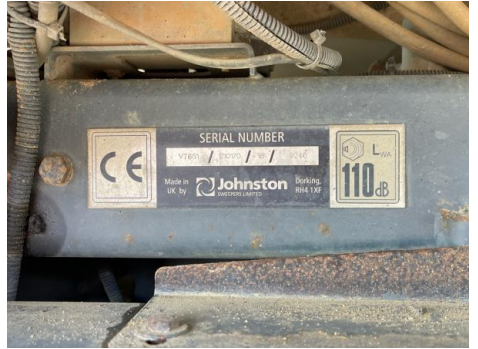
## Photos



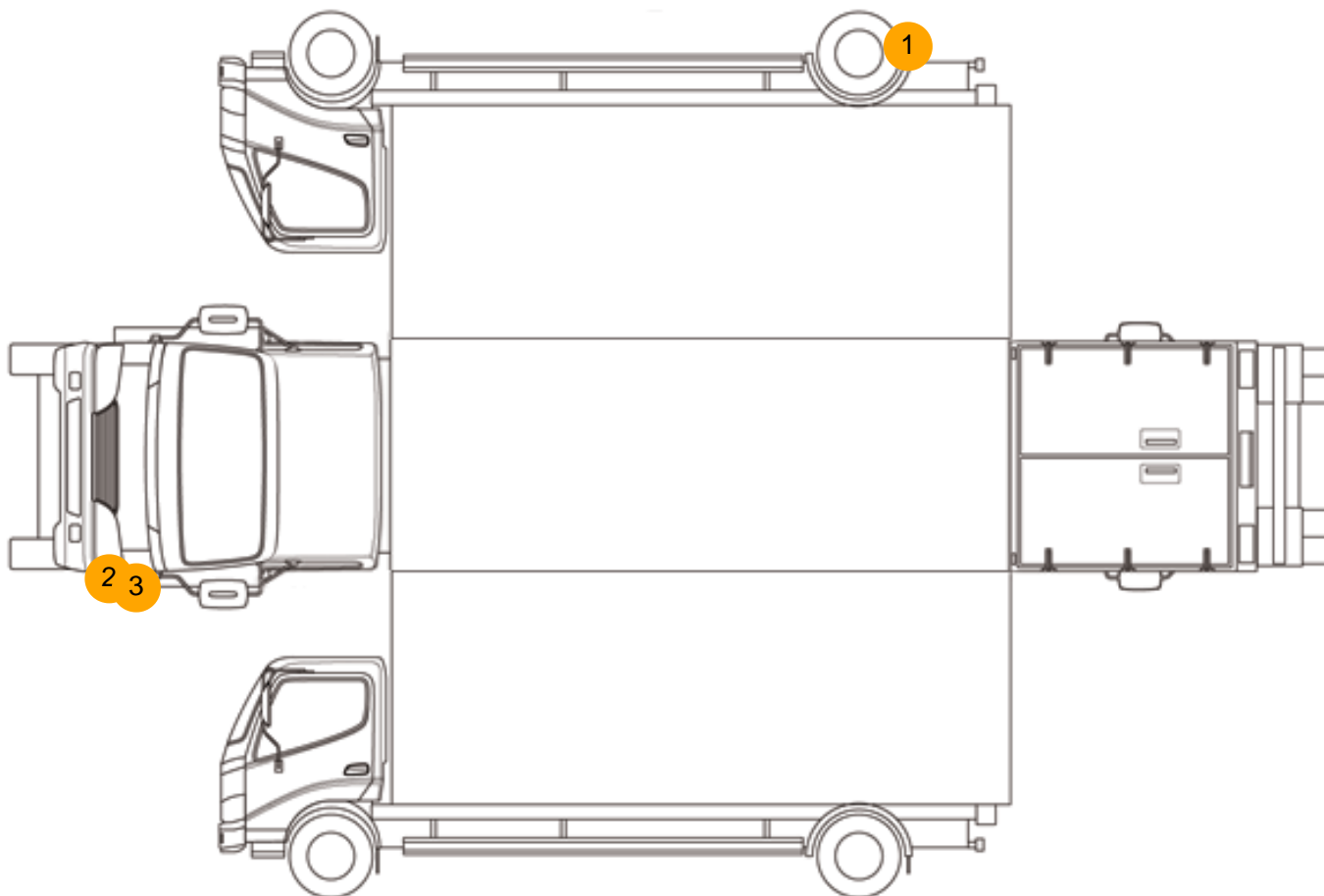








## Condition Check



## Damage Photos



1: Other  
N/A  
N/A



2: Bumper Front Moulding  
Scratched (Painted)  
Over 25mm Thru Paint





3: Panel Front  
Scratched  
Over 25mm Thru Paint



4: Seat Base Cover nsf  
Torn  
Over 3mm



5: Seat Base Cover osf  
Soiled  
Heavy

Interior

Carpet Condition		OK	Upholstery Condition		OK
Seat Condition		Poor	Odour		-
Engine Runs		OK	No Excessive Smoking		OK
EML light illuminated		OK	DPF light illuminated		OK
ABS light illuminated		OK			