

# VEHICLE INSPECTION REPORT

**DG66SFV**

## Man TGS 26.360

### Inspection

Serious Damage? No

### Vehicle

VAT Plus VAT

V5 To Follow

### Details

Reg. date	25/11/2016	Colour	BLUE	Cab Type	DAY CAB
Year	2016	VIN	WMA18SZZ2HP081177	Gearbox	AUTOMATIC
Mileage	236,349 Km Warranted	Body Style	Dropside & Crane	Axle Combi	6x2
Fuel Type	Diesel	MOT Due	28/02/2026	Rear Suspension	Air

HMF 1430-L1 REMOTE CRANE (YEAR 2016), REAR LIFT, BEEN ON FULL R&M CONTRACT FORM NEW

### Tyres

NSF	NSI1	NSI2	NSI3	NSI4
OSF	OSI1	OSI2	OSI3	OSI4
Spare	NSO1	NSO2	NSO3	NSO4
	OSO1	OSO2	OSO3	OSO4

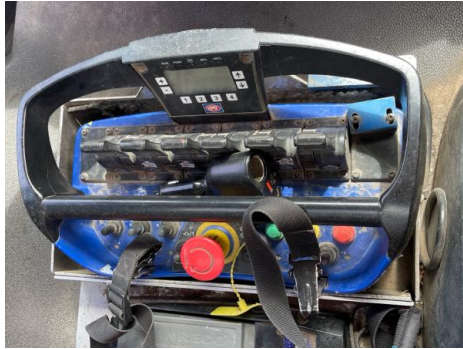
## Features

- Cruise control
- Park assist camera
- Radio/CD
- Front electric windows
- Cloth seat trim

## Photos



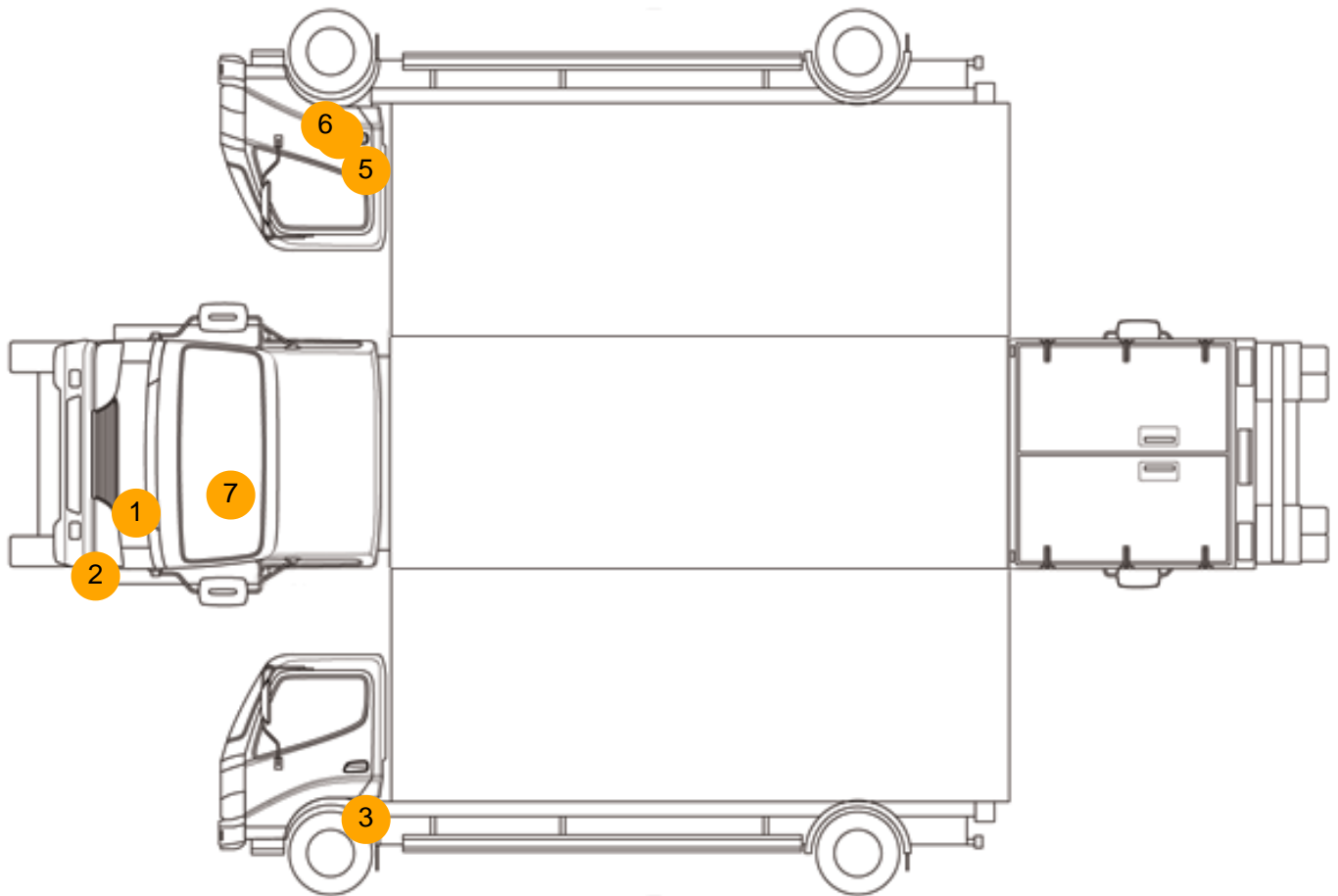








## Condition Check



## Damage Photos



1: Bonnet  
Scratched  
Over 25mm Thru Paint



2: Bumper Front  
Scratched  
Over 100mm Thru Paint





3: Wing nsf  
Scratched  
Over 25mm Thru Paint



4: Wing osf  
Scratched  
Over 25mm Thru Paint



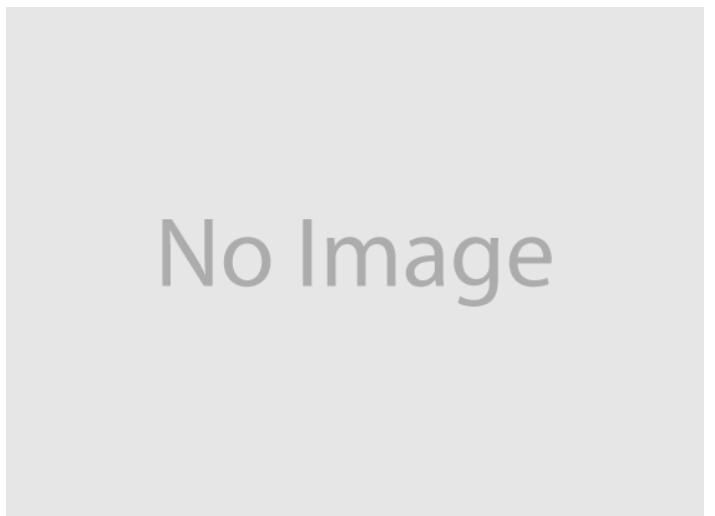
5: Door osf  
Dented  
Over 30mm



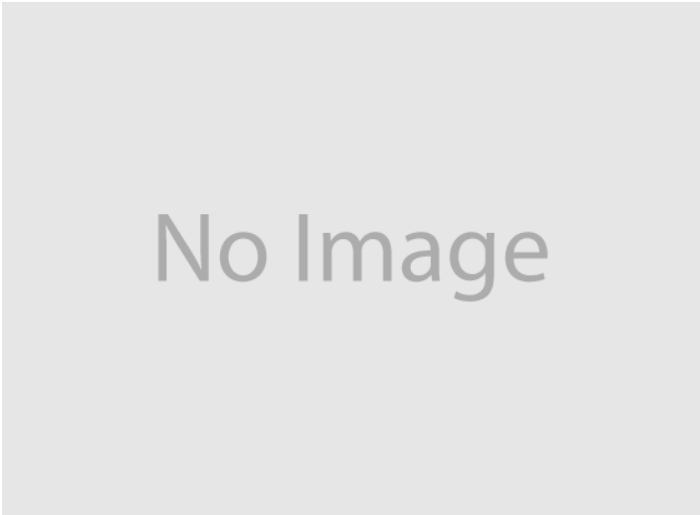
6: Door osf  
Scratched  
Over 25mm Thru Paint



7: Screen Front  
Chipped  
Over 10mm



8: Seat Base Cover osf  
Holed  
Over 3mm



9: Carpets Front  
Soiled  
Heavy



10:



11:

Interior

Carpets Condition	Poor	Upholstery Condition	OK
Seat Condition	Poor	Odour	-
Engine Runs	OK	No Excessive Smoking	OK
EML light illuminated	OK	DPF light illuminated	OK
ABS light illuminated	OK		