

# VEHICLE INSPECTION REPORT

**DE19WUV**

## Isuzu N75 190

### Inspection

Serious Damage? No

### Vehicle

VAT Plus VAT

V5 Present

### Details

Reg. date	12/03/2019	Colour	BLUE/YELLOW	Cab Type	DAY CAB
Year	2019	VIN	JAANPR75MJ100308	Gearbox	AUTOMATIC
Mileage	282,177 Km Warranted	Body Style	Dropside	Axle Combi	4x2
Fuel Type	Diesel	MOT Due	30/09/2025	Rear Suspension	Steel

\*WARNING LIGHT ON DASH\* FULL WIDTH RAMP, HYDRAULIC RAMPS, SURROUND CAMERA SYSTEM, BEEN ON FULL R&M CONTRACT FORM NEW

### Tyres

NSF	NSI1	NSI2	NSI3	NSI4
OSF	OSI1	OSI2	OSI3	OSI4
Spare	NSO1	NSO2	NSO3	NSO4
	OSO1	OSO2	OSO3	OSO4

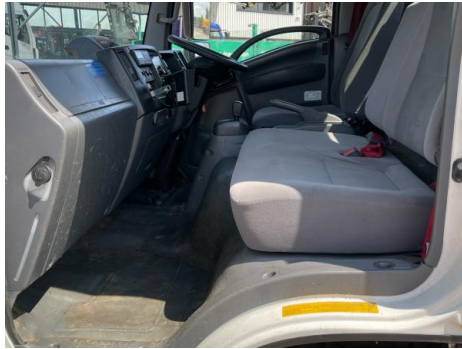
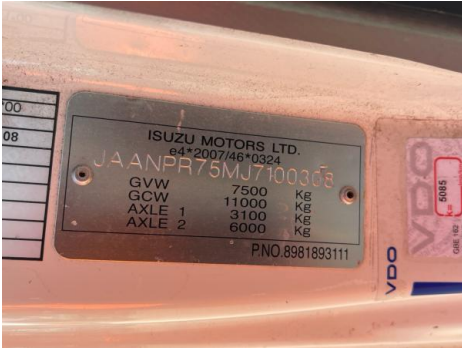
## Features

- Park assist camera
- Radio/CD
- Front electric windows
- Drivers airbag
- Passenger airbag
- Cloth seat trim

## Photos



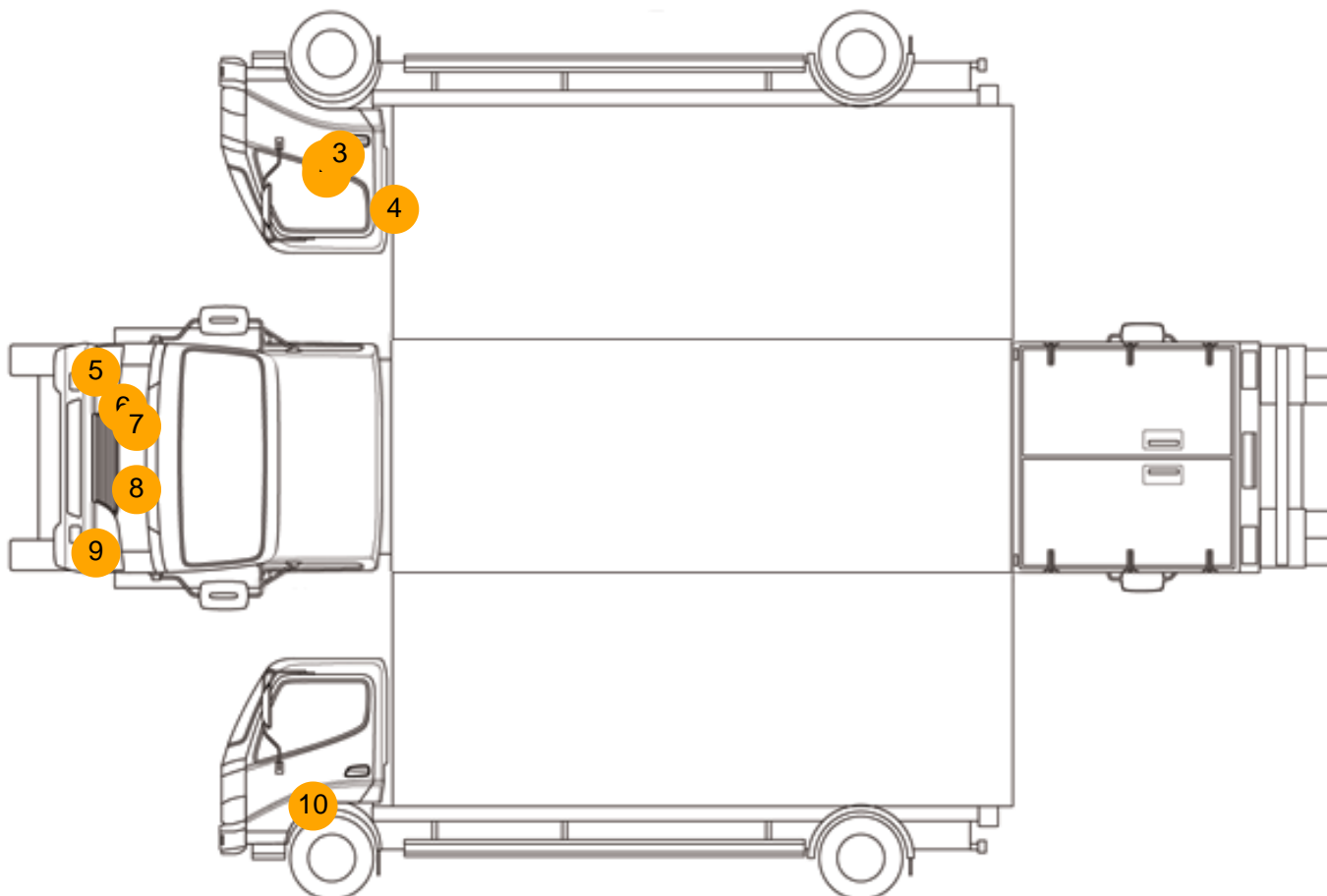








## Condition Check



## Damage Photos



1: Door osf  
Dented  
Over 30mm



2: Door osf  
Dented  
Over 30mm



3: Door osf  
Dented  
Over 30mm



4: Door osf  
Chipped  
Multiple Chips



5: Bumper Front  
Scratched  
Over 100mm Thru Paint



6: Headlamp os  
Broken  
Replace



7: Bonnet  
Dented  
Over 30mm



8: Bonnet  
Dented  
Over 30mm



9: Bumper Front  
Scratched  
Over 100mm Thru Paint



10: Door nsf  
Dented  
With Paint Damage



11: Dash Warning Lights  
Displayed  
No Action

### Interior

Carpet Condition		Average	Upholstery Condition		Average
Seat Condition		Average	Odour		-
Engine Runs		OK	No Excessive Smoking		OK
EML light illuminated		Fault	DPF light illuminated		Fault
ABS light illuminated		OK			