

VEHICLE INSPECTION REPORT

T90PPH

Volvo FL 816

Inspection

Serious Damage? No

Vehicle

VAT Plus VAT

V5 Buyer To Apply

Details

Reg. date 01/04/2018

Year 2018

Mileage 218,469 Km Not Warranted

Fuel Type Diesel

Colour WHITE

VIN YV2T0X1A7JZ117476

Body Style Sweeper

Cab Type DAY CAB

Gearbox MANUAL

Axle Combi 4x2

Rear Suspension Steel

WARNING LIGHT ON DASH JOHNSTON BODY, DONKEY ENGINE HOURS NOT DISPLAYING

Tyres

NSF NSI1

NSI2 NSI3

NSI4

OSF OSI1

OSI2 OSI3

OSI4

Spare NSO1

NSO2 NSO3

NSO4

OSO1

OSO2

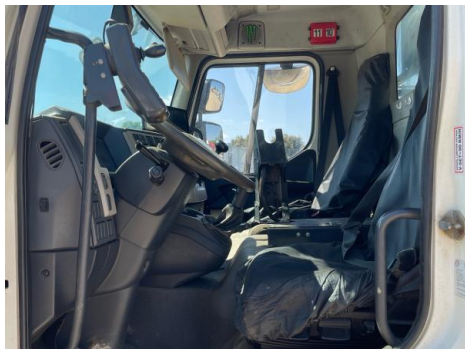
OSO3

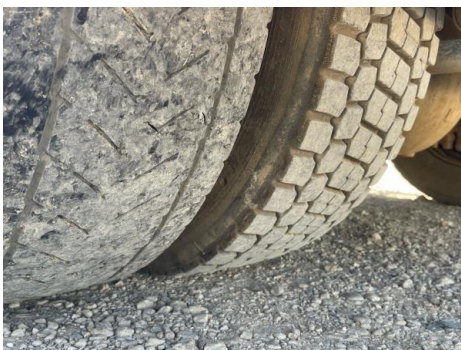
OSO4

Features

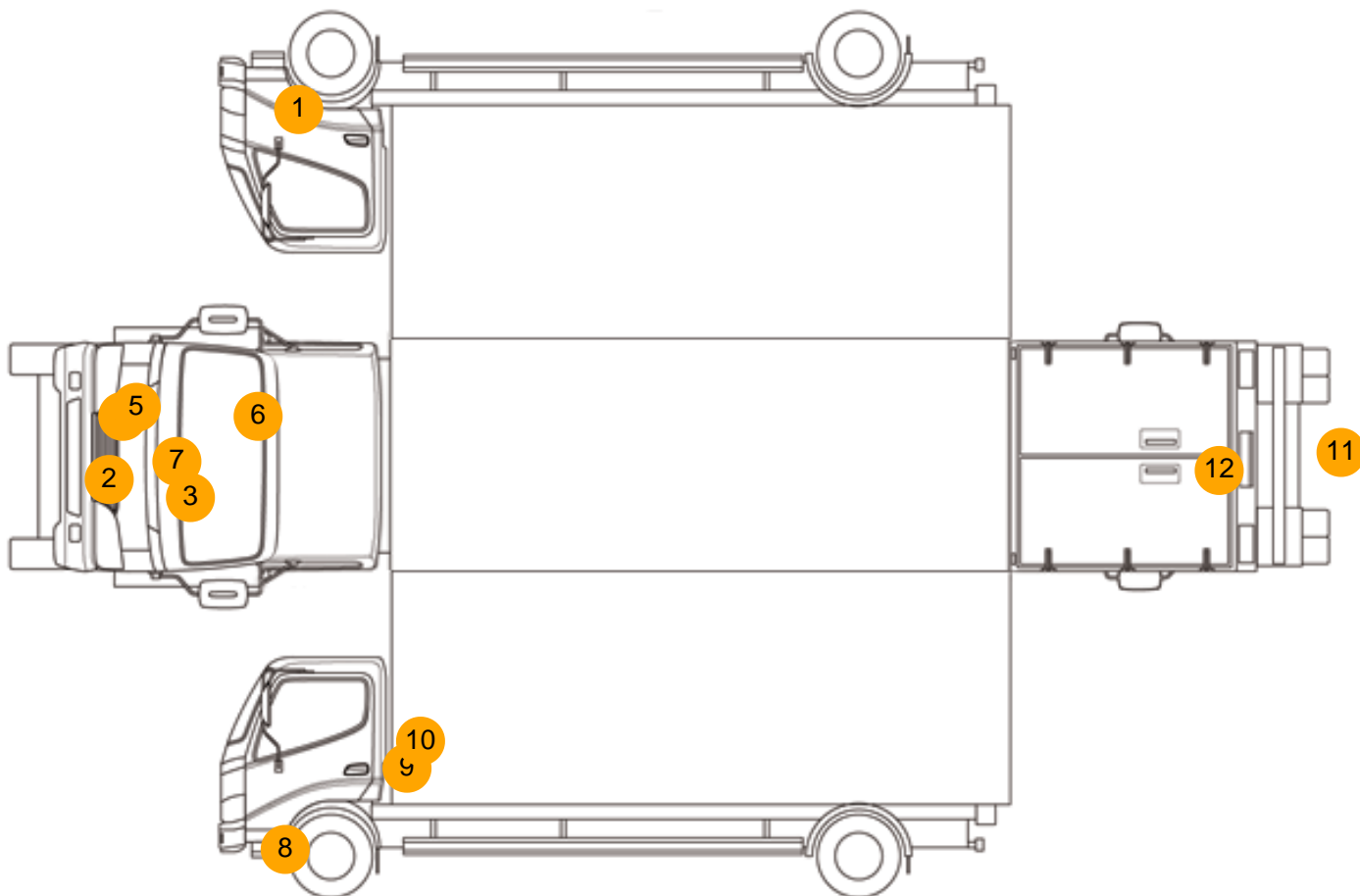
- Navigation system
- Air conditioning

Photos





Condition Check



Damage Photos



1: Other
N/A
N/A



2: Number Plate Front
Missing
Replace



3: Bumper Front
Chipped
Multiple Chips



4: Bumper Front
Dented
With Paint Damage



5: Front TowEye Cvr
Missing
Replace



6: Screen Front
Chipped
Over 10mm



7: Bonnet
Chipped
Multiple Chips



8: Other
N/A
N/A



9: Door nsf
Chipped
Edge Chip



10: B Post ns
Dented
Over 2 UpTo 10mm



11: Bumper Rear
Dented
Over 30mm



12: Panel Rear
Dented
With Paint Damage



13: Air Vents nsf
Missing
Replace

Interior

Carpet Condition		Upholstery Condition	
Seat Condition	Average Average	Odour	Average -
Engine Runs	OK	Gearbox 1st and Reverse Test	OK
Brakes	OK	Clutch Slip Test from Static	OK
Parking Brake	OK	Gearbox Static Gear Selection (engine running)	OK
		No Excessive Smoking	OK
EML light illuminated	Fault	Oil warning light illuminated	OK
Airbag light illuminated	OK	DPF light illuminated	Fault
ABS light illuminated	OK	Service indicator light illuminated	OK