

# VEHICLE INSPECTION REPORT

**HV640HS**

## Mercedes-Benz Sprinter 316 CDI

### Inspection

Serious Damage? No

### Vehicle

VAT Plus VAT

V5 Photocopy

### Details

Reg. date 05/02/2015

Year 2015

Mileage 147,179 Miles  
Warranted

Fuel Type Diesel

Colour YELLOW

VIN WDB9066352S558047

Body Style Crew Van

MOT Due 12/11/2025

Gearbox MANUAL

SINGLE SIDE DOOR

### Tyres

NSF

NSR

OSF

OSR

Spare

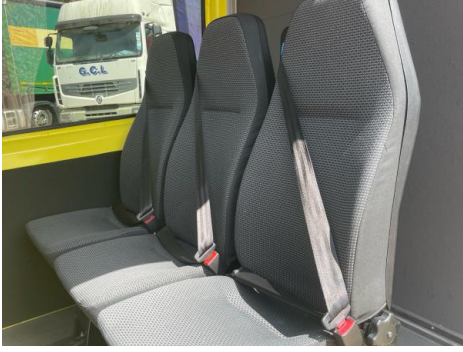
## Features

- Air conditioning
- Front electric windows

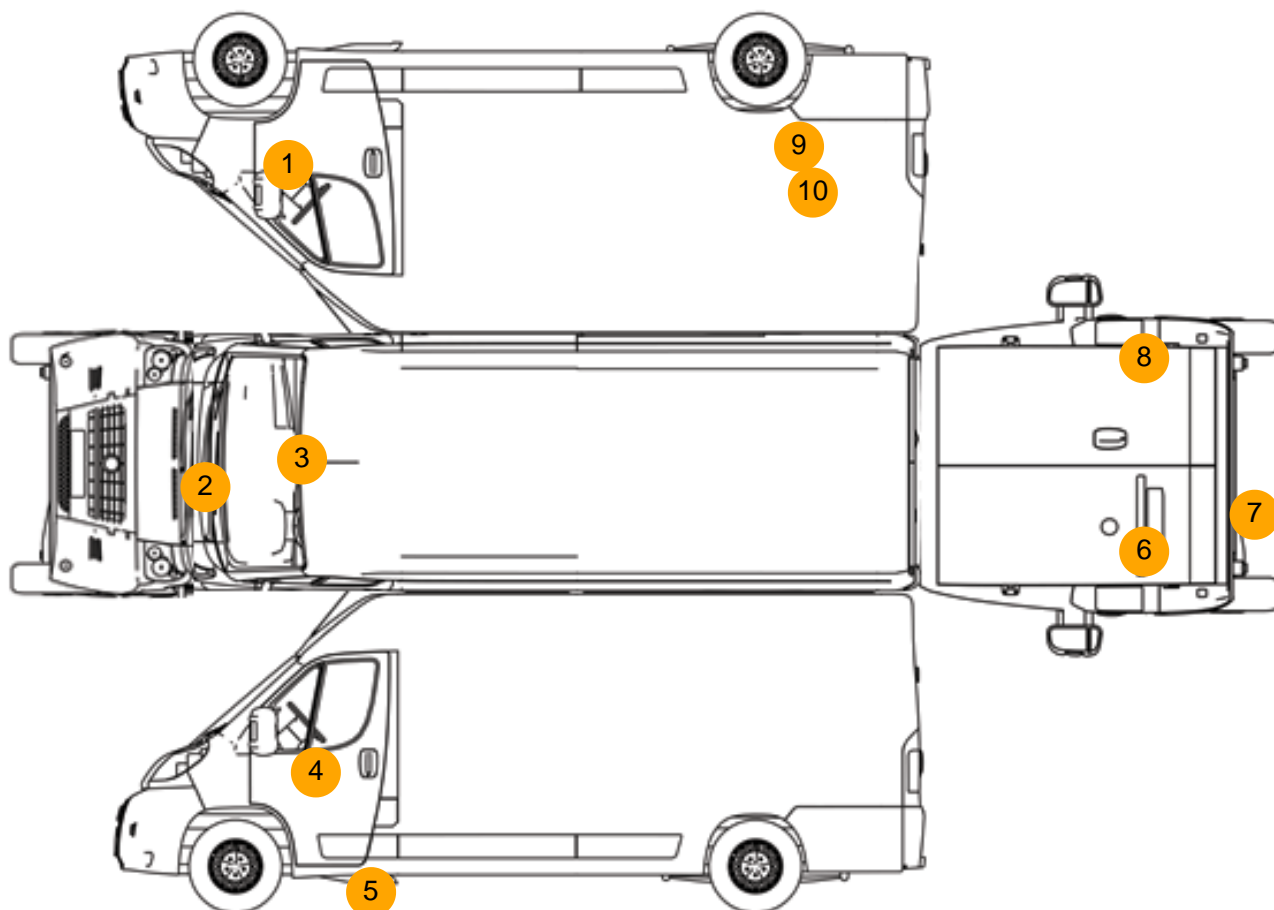
## Photos







## Condition Check



## Damage Photos



1: Wing of  
Chipped  
1 To 5



2: Bonnet  
Chipped  
Multiple Chips





3: Screen Front  
Chipped  
UpTo 10mm



4: Door Mirror Assy nsf  
Scuffed (Unpainted)  
Over 100mm



5: Sill ns  
Rusted  
Over 5mm



6: Door nsr  
Dented  
2 Or Less UpTo 10mm



7: Bumper Rear  
Dented  
Over 2 UpTo 10mm



8: Lamp osr  
Broken  
Replace



9: Other  
N/A  
N/A



10: Qtr Panel osr  
Dented  
With Paint Damage



11: Other  
N/A  
N/A

Interior

Carpet Condition	Average		Upholstery Condition	Average
Seat Condition	Average		Odour	No
Engine Runs	OK		Gearbox 1st and Reverse Test	OK
Brakes	OK		Clutch Slip Test from Static	OK
Parking Brake	OK		Gearbox Static Gear Selection (engine running)	OK
			No Excessive Smoking	OK
EML light illuminated	OK		Oil warning light illuminated	OK
Airbag light illuminated	OK		DPF light illuminated	OK
ABS light illuminated	OK		Service indicator light illuminated	OK