

# VEHICLE INSPECTION REPORT

**DG16EFP**

## Man TGS 26.360

### Inspection

Serious Damage? No

### Vehicle

VAT Plus VAT

V5 Buyer To Apply

### Details

Reg. date 27/06/2016

VIN WMA18SZZ0GP073481

Doors 2

Year 2016

Body Style Dropside & Crane

Axle Combi 6x2

Mileage 110,772 Km Warranted

Keys 2

Steering Combi Rear Steer

Fuel Type Diesel

Cab Type DAY CAB

Rear Suspension Air

Colour BLUE

Gearbox MANUAL

\*FULL R&M CONTRACT SINCE NEW\* CRANE - HMF 1420-K2 2016 REMOTE CRANE, KINSHOFFER BRICK GRAB

### Tyres

NSF	NSI1	NSI2	NSI3	NSI4
OSF	OSI1	OSI2	OSI3	OSI4
Spare	NSO1	NSO2	NSO3	NSO4
	OSO1	OSO2	OSO3	OSO4

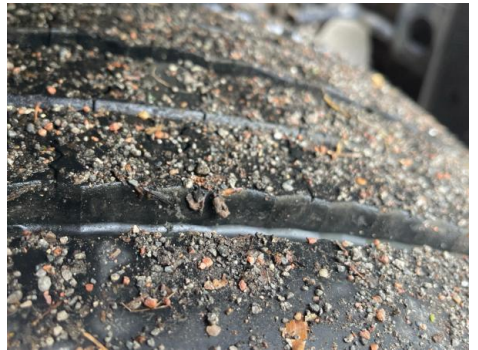
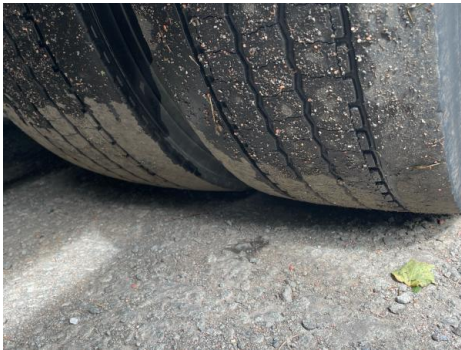
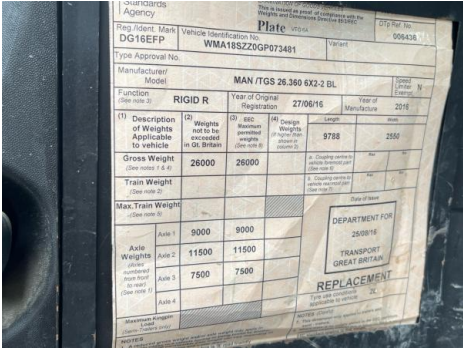
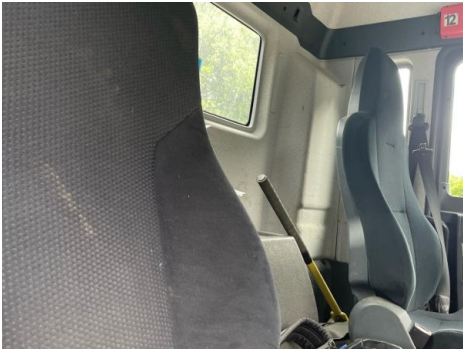
## Features

- Park assist camera
- Radio/CD
- Front electric windows
- Central locking
- Cloth seat trim

## Photos



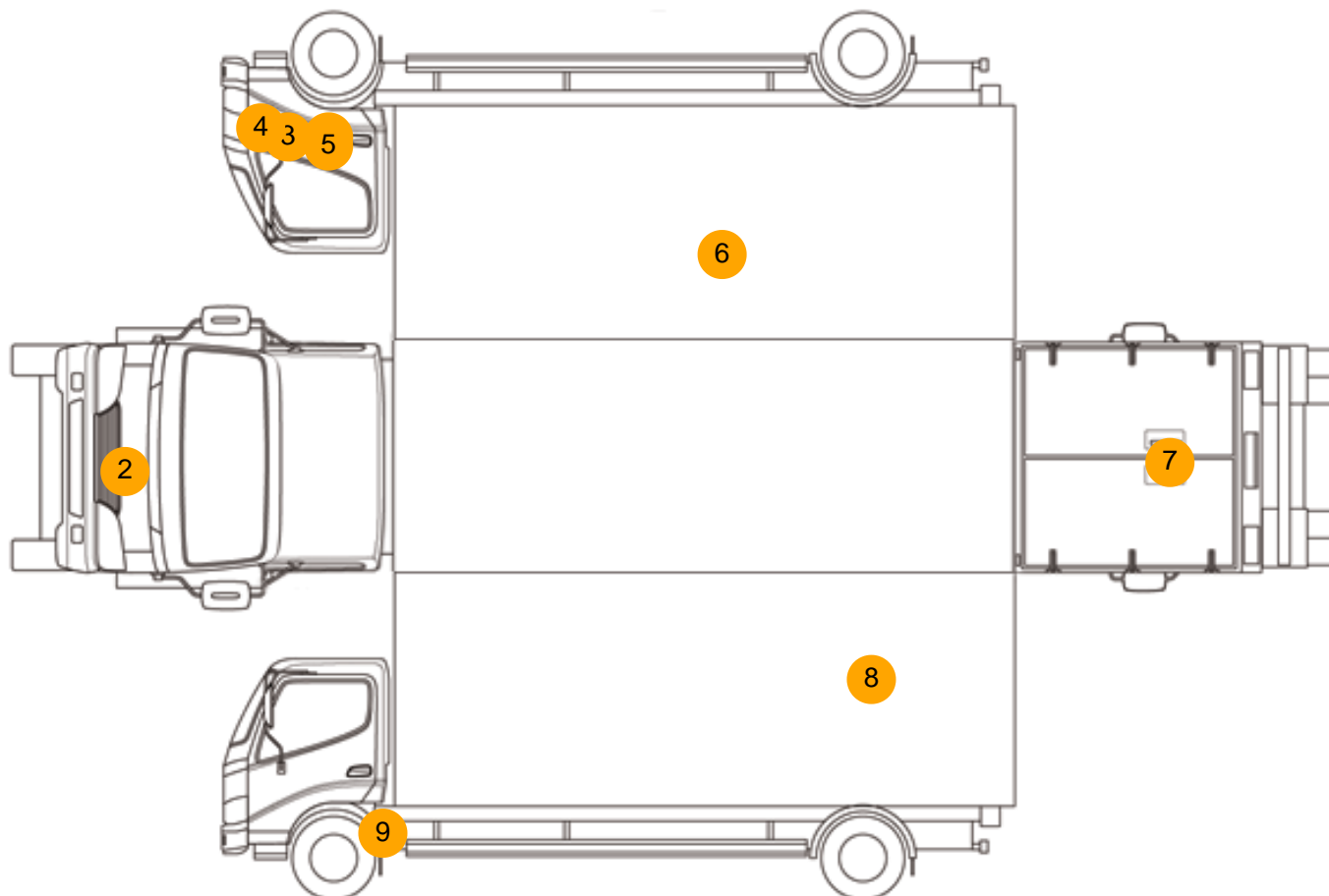








## Condition Check



## Damage Photos



1: Door Moulding of  
Scuffed (Unpainted)  
Over 100mm



2: Bonnet  
Chipped  
Multiple Chips



3: Wing nsf  
Scratched  
Over 25mm Thru Paint



4: Wing osf  
Scratched  
Over 25mm Thru Paint



5: Door osf  
Dented  
Over 30mm



6: Qtr Panel osr  
Dented  
Over 30mm



7: Tailgate  
Rusted  
Over 5mm



8: Qtr Panel nsr  
Dented  
With Paint Damage





9: Door Moulding nsf  
Scuffed (Unpainted)  
Over 100mm

Interior

Carpet Condition		Upholstery Condition	
Seat Condition	Average Average	Odour	Average -
Engine Runs	OK	Gearbox 1st and Reverse Test	OK
Brakes	OK	Clutch Slip Test from Static	OK
Turbo Boosting	OK	Gearbox Static Gear Selection (engine running)	OK
Parking Brake	OK	No Excessive Smoking	OK
EML light illuminated	OK	Oil warning light illuminated	OK
Airbag light illuminated	OK	DPF light illuminated	OK
ABS light illuminated	OK	Service indicator light illuminated	OK
Roof / sunroof	OK	Radio	OK
Windows	OK	Steering	OK