

# VEHICLE INSPECTION REPORT

**BP18JUC**

## Mercedes-Benz Citan 109CDI

### Inspection

Serious Damage? No

### Vehicle

VAT Plus VAT

V5 Buyer To Apply

### Details

Reg. date 12/06/2018

Year 2018

Mileage 110,865 Miles  
Warranted

Fuel Type Diesel

Colour WHITE

VIN WDF4156032U242741

Body Style Panel Van SWB

MOT Due Expired

CAP Clean £2,750.00

CAP Average £2,375.00

CAP Below £1,850.00

Gearbox MANUAL

SINGLE SIDE DOOR, E/MIRRORS

### Tyres

NSF

NSR

OSF

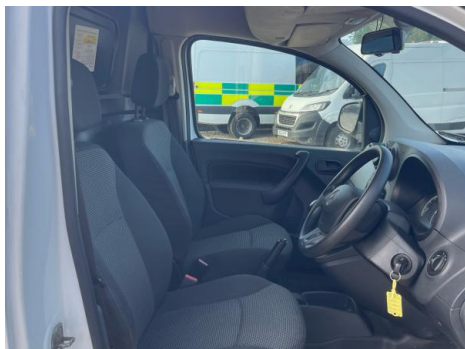
OSR

Spare

## Features

- Park assist camera
- Front electric windows

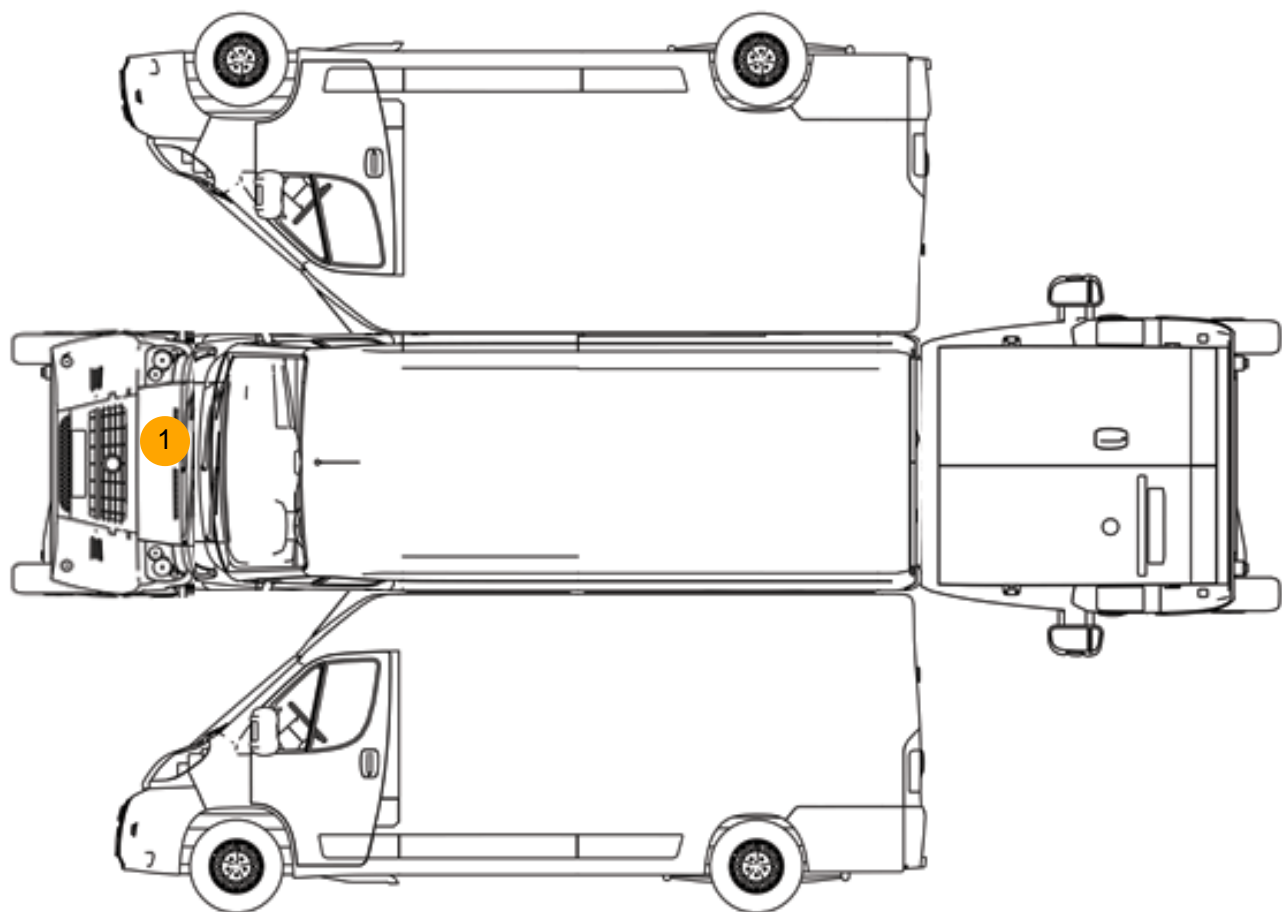
## Photos







Condition Check



Damage Photos



1: Panel Front  
Chipped  
Multiple Chips



2: Door Pad osf  
Holed  
Over 3mm

Interior

Carpet Condition      Average  
Seat Condition      Average

Upholstery Condition      Average  
Odour      No

Engine Runs	OK	Gearbox 1st and Reverse Test	OK
Brakes	OK	Clutch Slip Test from Static	OK
Parking Brake	OK	Gearbox Static Gear Selection (engine running)	OK
		No Excessive Smoking	OK
EML light illuminated	OK	Oil warning light illuminated	OK
Airbag light illuminated	OK	DPF light illuminated	OK
ABS light illuminated	OK	Service indicator light illuminated	OK