

# VEHICLE INSPECTION REPORT

**BU68HVV**

## ISUZU D-MAX 1.9 Double Cab 4x4

### Inspection

Serious Damage? No

### Vehicle

VAT Plus VAT

V5 Buyer To Apply

### Details

Reg. date 04/02/2019

Year 2019

Mileage 141,291 Miles  
Warranted

Fuel Type Diesel

Colour WHITE

VIN MPATFS87JJT010233

Body Style Pickup Double Cab

MOT Due Expired

CAP Clean £5,075.00

CAP Average £4,450.00

CAP Below £3,550.00

Gearbox MANUAL

Gears 6

Axle Combi \$WD

TOW BAR

### Tyres

NSF

NSR

OSF

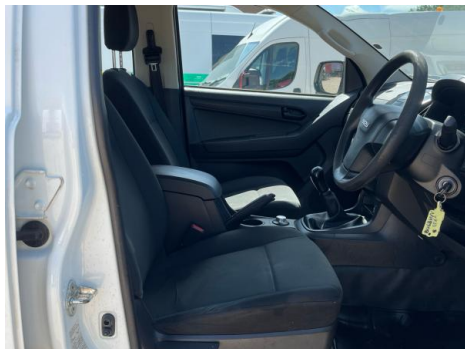
OSR

Spare

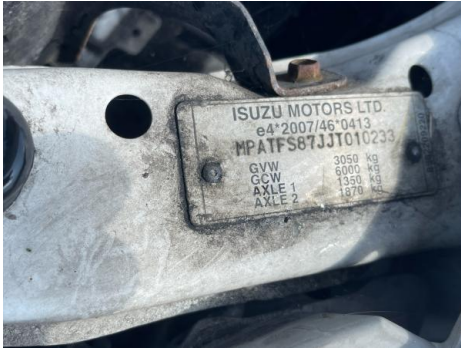
## Features

- Air conditioning
- Front electric windows

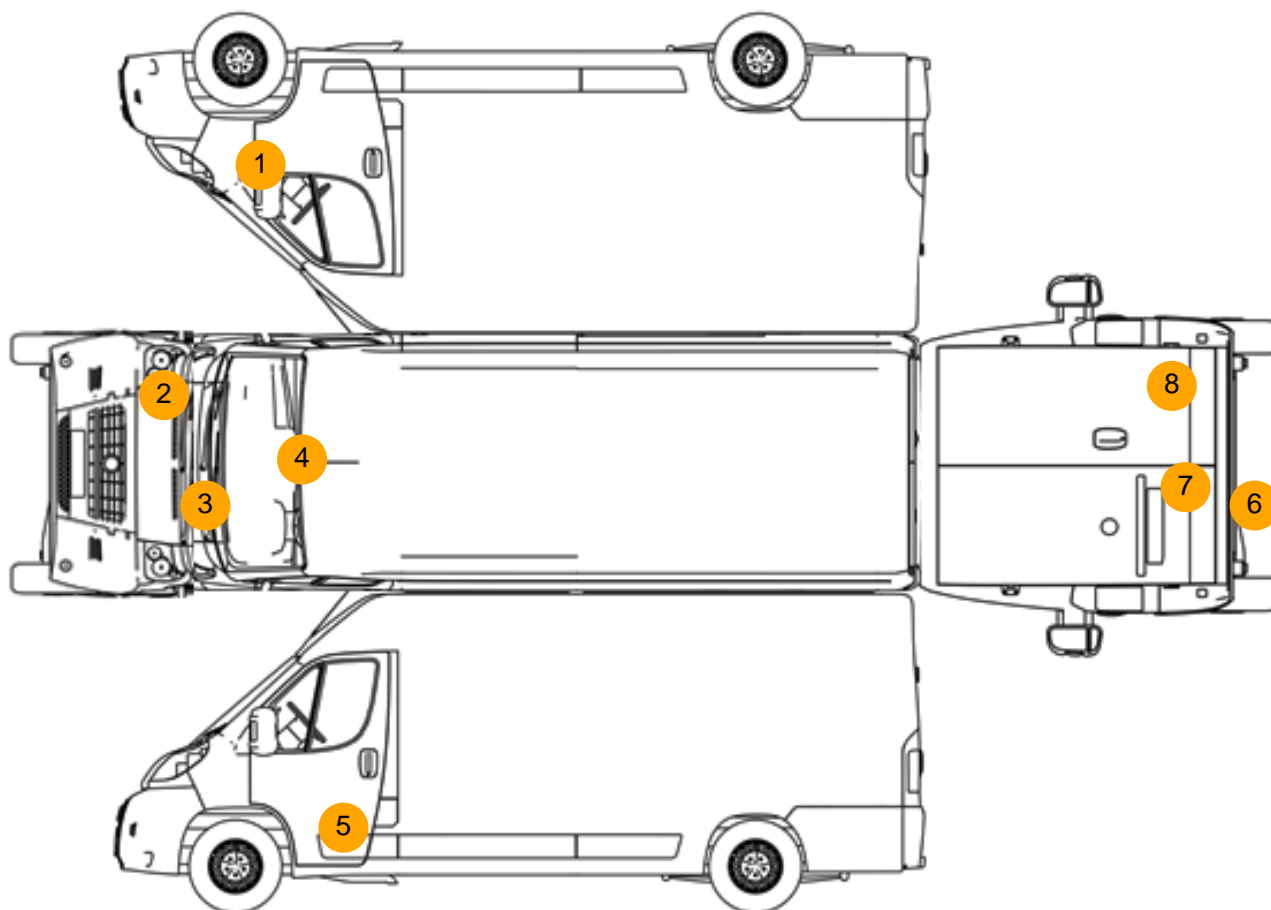
## Photos







## Condition Check



## Damage Photos



1: Wing osf  
Chipped  
1 To 5



2: Bumper Front  
Insecure  
Action Required





3: Bonnet  
Chipped  
Multiple Chips



4: Screen Front  
Chipped  
UpTo 10mm



5: Door nsf  
Chipped  
Over 5mm



6: Bumper Rear  
Rusted  
Over 5mm



7: Other  
N/A  
N/A



8: Other  
N/A  
N/A

# Interior

<b>Carpet Condition</b>	<b>Average</b>	<b>Upholstery Condition</b>	<b>Average</b>
<b>Seat Condition</b>	<b>Average</b>	<b>Odour</b>	<b>No</b>
Engine Runs	OK	Gearbox 1st and Reverse Test	OK
Brakes	OK	Clutch Slip Test from Static	OK
Parking Brake	OK	Gearbox Static Gear Selection (engine running)	OK
		No Excessive Smoking	OK
EML light illuminated	OK	Oil warning light illuminated	OK
Airbag light illuminated	OK	DPF light illuminated	OK
ABS light illuminated	OK	Service indicator light illuminated	OK