

# VEHICLE INSPECTION REPORT

**VX16AEE**

## Dennis Elite 6

### Inspection

Serious Damage? No

### Vehicle

VAT Plus VAT

V5 Present

### Details

Reg. date 04/04/2016

Colour WHITE

Gearbox AUTOMATIC

Year 2016

VIN SEG2628HR6BG21599

Axle Combi 6x2

Mileage 83,889 Km Warranted

Body Style Refuse Collector

Rear Suspension Steel

Fuel Type Diesel

Cab Type CREW CAB

\*WARNING LIGHT ON DASH\* OLYMPUS TP22 BODY, TERBERG SPLIT LIFT

### Tyres

NSF NSI1

NSI2

NSI3

NSI4

OSF OSI1

OSI2

OSI3

OSI4

Spare NSO1

NSO2

NSO3

NSO4

OSO1

OSO2

OSO3

OSO4

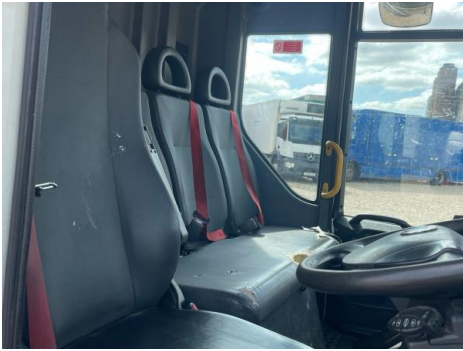
## Features

- Park assist camera

## Photos

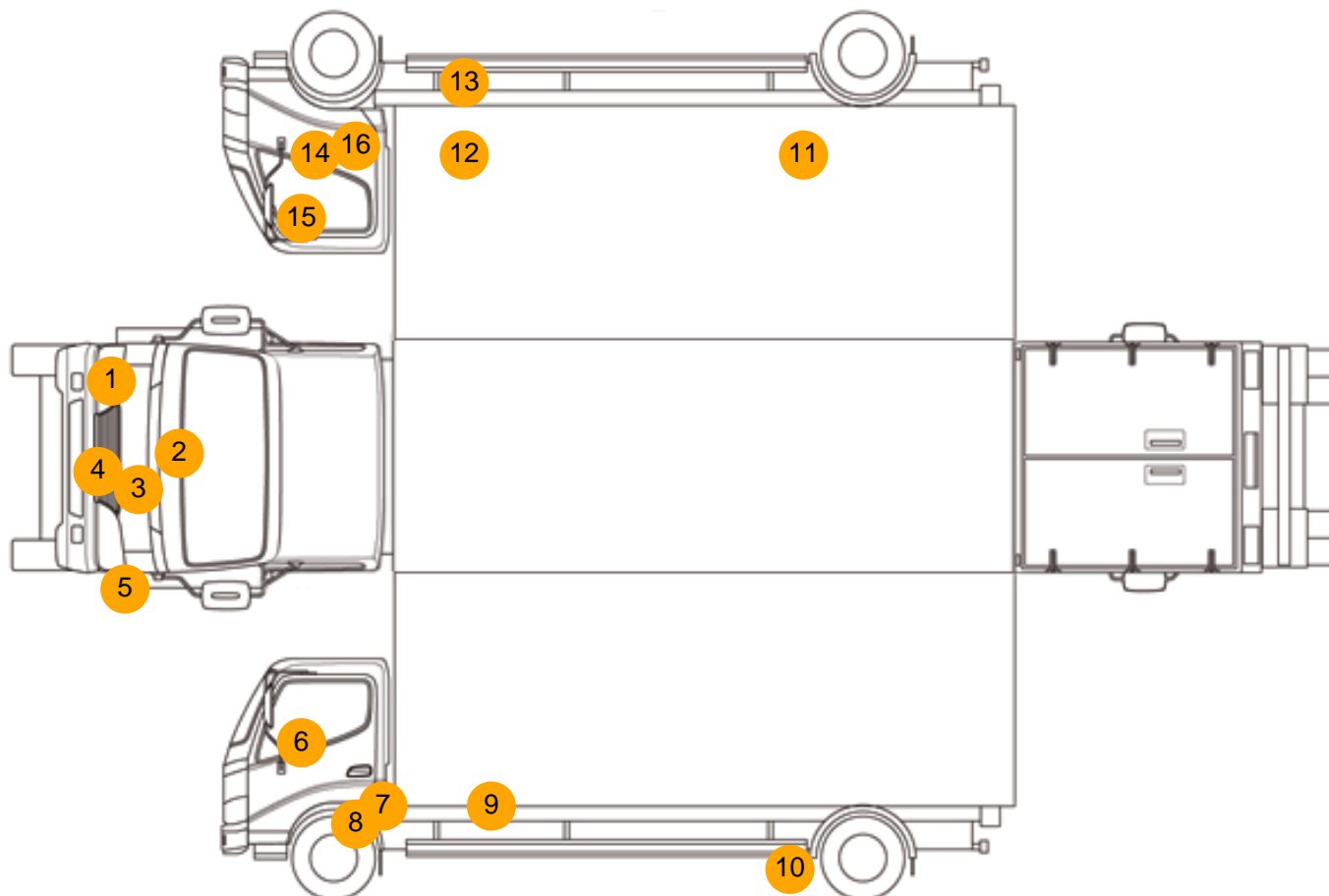








## Condition Check



## Damage Photos



1: Bumper Front Moulding  
Broken  
Replace



2: Bonnet  
Scratched  
UpTo 25mm Thru Paint



3: Bumper Front  
Cracked  
Over 25mm



4: Number Plate Front  
Broken  
Replace



5: Bumper Front Moulding  
Broken  
Replace



6: Door Mirror Assy nsf  
Scuffed (Unpainted)  
UpTo 100mm



7: Handle Outer nsf  
Broken  
Replace



8: Other  
N/A  
N/A





9: Other  
N/A  
N/A



10: Other  
N/A  
N/A



11: Other  
N/A  
N/A



12: Other  
N/A  
N/A



13: Other  
N/A  
N/A



14: Other  
N/A  
N/A





15: Door Mirror Assy osf  
Scuffed (Unpainted)  
UpTo 100mm



16: Other  
N/A  
N/A



17: Seat Base Cover nsf  
Torn  
Over 3mm



18: Seat Base Cover nsf  
Holed  
Over 3mm



19: Seat Base Cover nsf  
Holed  
Over 3mm



20: Fascia Panel  
Broken  
Replace



21: Other  
N/A  
N/A

22: Seat Base Cover osf  
Holed  
Over 3mm



23: Seat Base Cover osf  
Torn  
Over 3mm

## Interior

Carpet Condition		Upholstery Condition	
Seat Condition		Average	
		Average	
Engine Runs	OK	Gearbox 1st and Reverse Test	OK
Brakes	OK	Clutch Slip Test from Static	OK
Parking Brake	OK	Gearbox Static Gear Selection (engine running)	OK
		No Excessive Smoking	OK
EML light illuminated	Fault	Oil warning light illuminated	OK
Airbag light illuminated	OK	DPF light illuminated	OK
ABS light illuminated	Fault	Service indicator light illuminated	OK