

VEHICLE INSPECTION REPORT

PF65LNC

Daf LF 220

Inspection

Serious Damage? No

Vehicle

VAT Plus VAT

V5 Present

Details

Reg. date 22/12/2015

Colour WHITE

Cab Type DAY CAB

Year 2015

VIN XLRAEL2700L447803

Gearbox AUTOMATIC

Mileage 138,039 Km Warranted

Body Style Refuse Collector

Axle Combi 4x2

Fuel Type Diesel

MOT Due 30/11/2025

Rear Suspension Steel

NTM K2K MAX BODY, TERBERG SINGLE LIFT

Tyres

NSF NSI1

NSI2

NSI3

NSI4

OSF OSI1

OSI2

OSI3

OSI4

Spare NSO1

NSO2

NSO3

NSO4

OSO1

OSO2

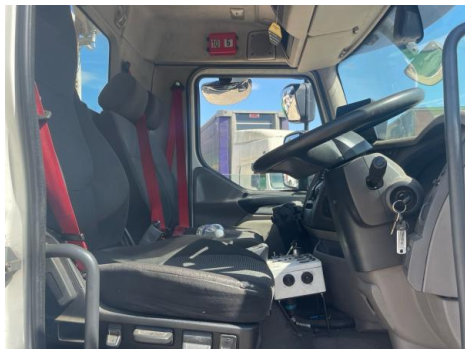
OSO3

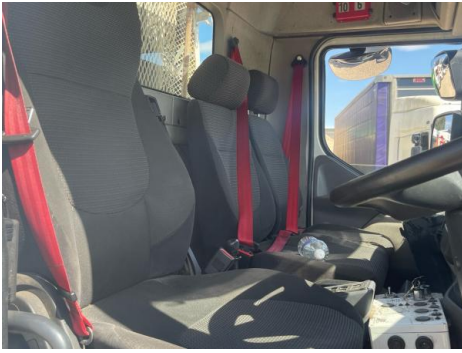
OSO4

Features

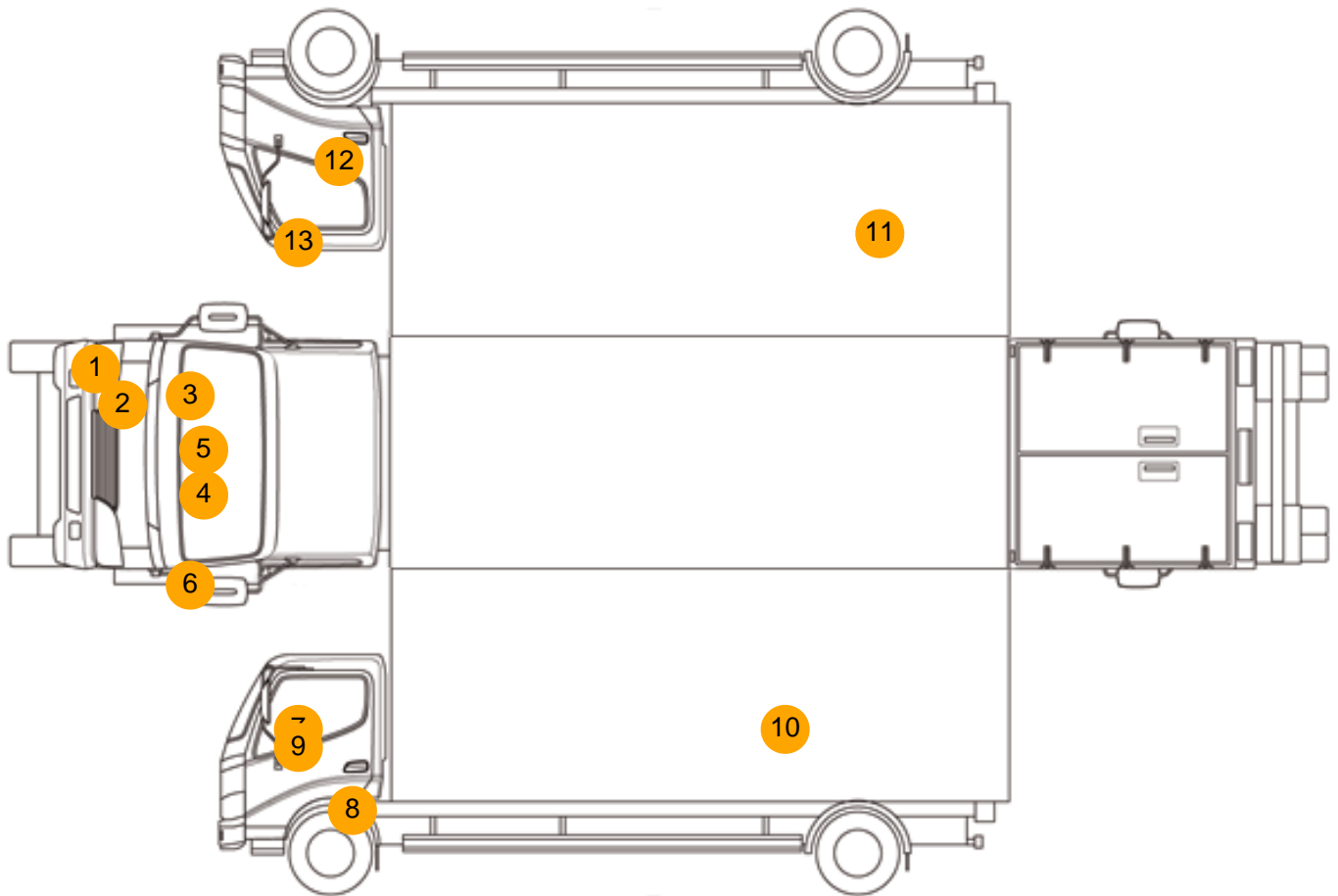
- Park assist camera
- Air conditioning

Photos





Condition Check



Damage Photos



1: Bumper Front
Scratched
25 to 100mm Thru Paint



2: Fog Lamp Surround is
Broken
Replace



3: Wing osf
Scratched
UpTo 25mm Thru Paint



4: Grille Front
Scuffed (Unpainted)
UpTo 100mm



5: Other
N/A
N/A



6: Wing nsf
Poor Previous Repair
Poor Paint



7: Door Mirror Assy nsf
Broken
Replace



8: Door nsf
Dented
Over 30% Of Panel



9: Door Mirror Assy nsf
Broken
Replace



10: Qtr Panel nsr
Chipped
Multiple Chips



11: Qtr Panel osr
Chipped
Multiple Chips



12: Door osf
Scratched
Over 25mm Thru Paint



13: Door Mirror Assy osf
Scuffed (Unpainted)
Over 100mm



14: Seat Base Cover osf
Torn
Over 3mm



15: Seat Base Cover nsf
Scuffed
Over 25mm

Interior

Carpet Condition		Upholstery Condition	
Seat Condition	Average Average	Odour	Average -
Engine Runs	OK	Gearbox 1st and Reverse Test	OK
Brakes	OK	Clutch Slip Test from Static	OK
Parking Brake	OK	Gearbox Static Gear Selection (engine running)	OK
		No Excessive Smoking	OK
EML light illuminated	OK	Oil warning light illuminated	OK
Airbag light illuminated	OK	DPF light illuminated	OK
ABS light illuminated	OK	Service indicator light illuminated	OK